

KUSSO SIX DEPARTURE (RNAV)

SC-2, 08 OCT 2020 to 05 NOV 2020

TAKEOFF MINIMUMS

ATIS 120.7

CINC DEL 124.65

GND CON 121.9

MEACHAM TOWER 118.3 257.8

REGIONAL DEP CON 118.1 306.95 (NORTH)

135.975 379.9 (SOUTH)

Rwys 16, 17: Standard.

Rwy 34: 300-2 or standard with minimum climb of 220' per NM to 1100,

or alternatively, with standard takeoff minimums and a normal 200' per NM

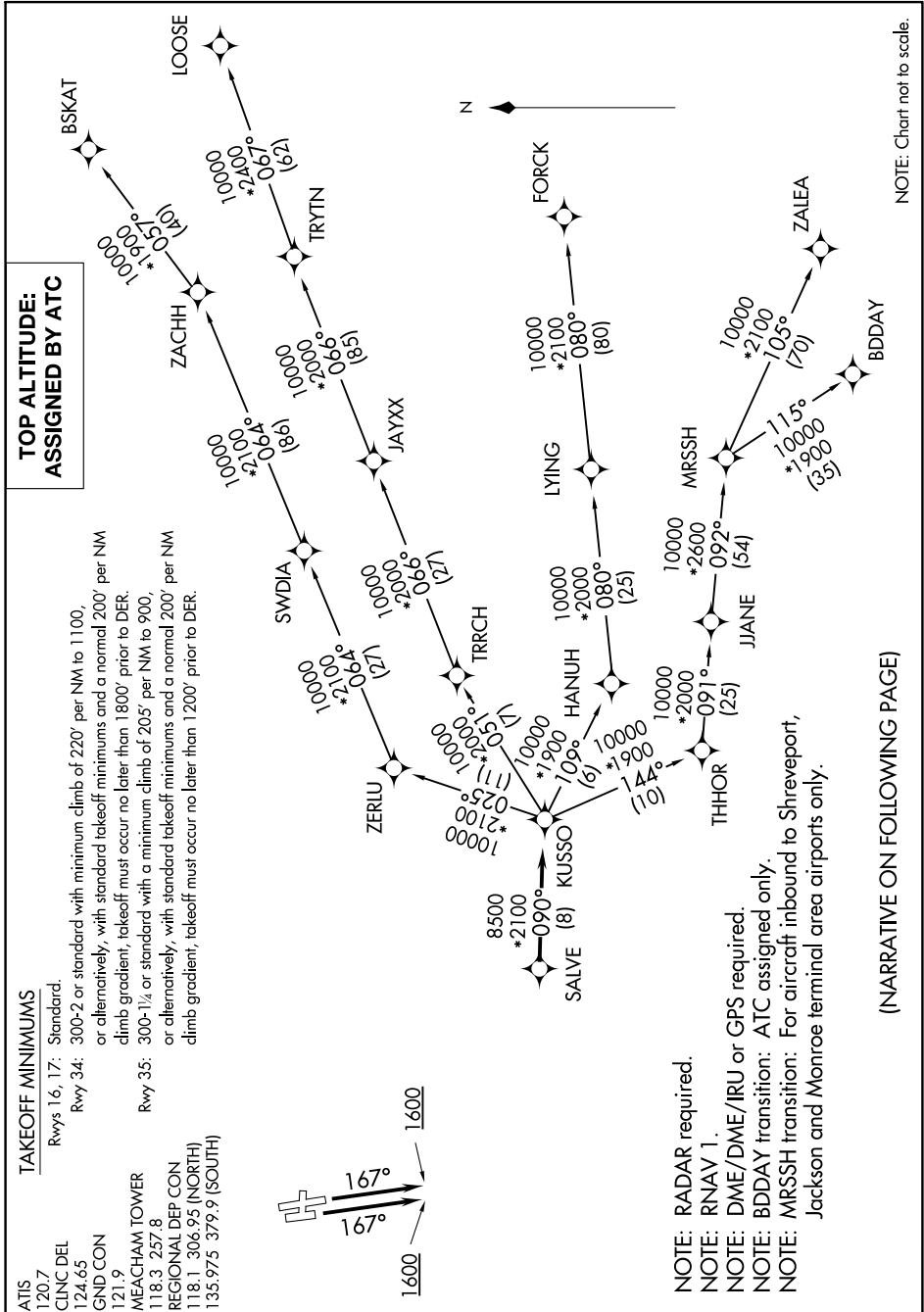
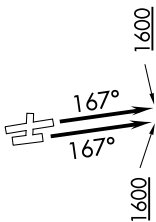
climb gradient, takeoff must occur no later than 1800' prior to DER.

Rwy 35: 300-1/4 or standard with a minimum climb of 205' per NM to 900,

or alternatively, with standard takeoff minimums and a normal 200' per NM

climb gradient, takeoff must occur no later than 1200' prior to DER.

TOP ALTITUDE: ASSIGNED BY ATC



NOTE: RADAR required.
 NOTE: RNAV 1.
 NOTE: DME/DME/IRU or GPS required.
 NOTE: BDDAY transition: ATC assigned only.
 NOTE: MRSSH transition: For aircraft inbound to Shreveport, Jackson and Monroe terminal area airports only.

(NARRATIVE ON FOLLOWING PAGE)

NOTE: Chart not to scale.

SC-2, 08 OCT 2020 to 05 NOV 2020