


WAAS CH 42612 W16A	APP CRS 164°	Rwy ldg 7502 TDZE 710 Apt Elev 710
--	------------------------	---

RNAV (GPS) RWY 16

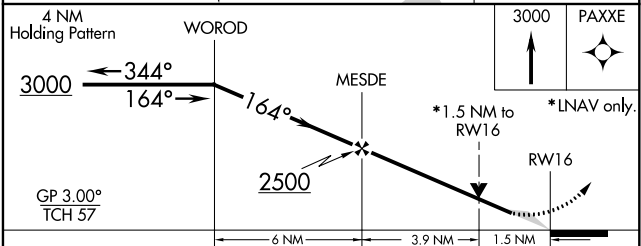
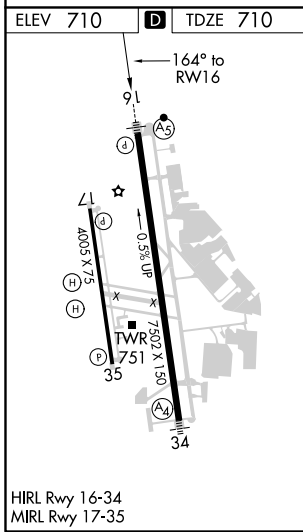
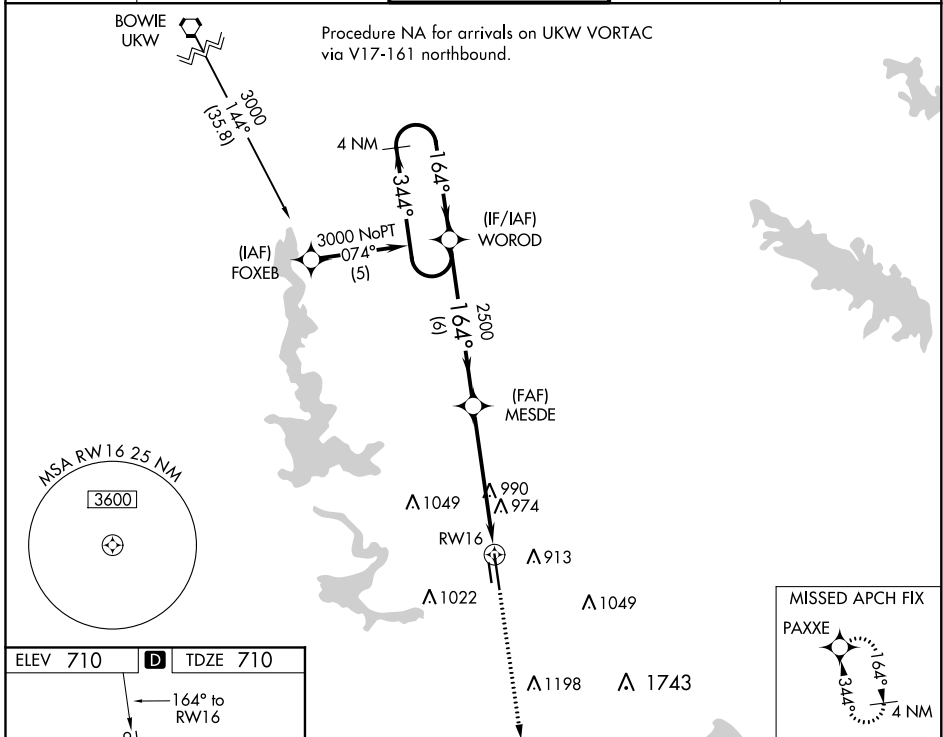
FORT WORTH MEACHAM INTL (FTW)

▼ For uncompensated Baro-VNAV systems, LNAV/VNAV NA below -16°C (4°F) or above 47°C (116°F). DME/DME RNP-0.3 NA.
 ** RVR 1800 authorized with use of FD or AP or HUD to DA.

MALSR 

MISSED APPROACH: Climb to 3000 direct PAXXE and hold.

ATIS 120.7	REGIONAL APP CON (North) 118.1 306.95 (South) 135.975 379.9	MEACHAM TOWER 118.3 257.8	GND CON 121.9	CLNC DEL 124.65
----------------------	---	-------------------------------------	-------------------------	---------------------------



CATEGORY	A	B	C	D
LPV DA **		910/24	200 (200-1/2)	
LNAV/VNAV DA		1284-1 1/2	574 (600-1 1/2)	
LNAV MDA	1240/24	530 (600-1/2)	1240/50 530 (600-1)	1240/60 530 (600-1 1/4)
CIRCLING	1260-1	550 (600-1)	1280-1 1/2 570 (600-1 1/2)	1300-2 590 (600-2)

SC-2, 08 OCT 2020 to 05 NOV 2020

SC-2, 08 OCT 2020 to 05 NOV 2020