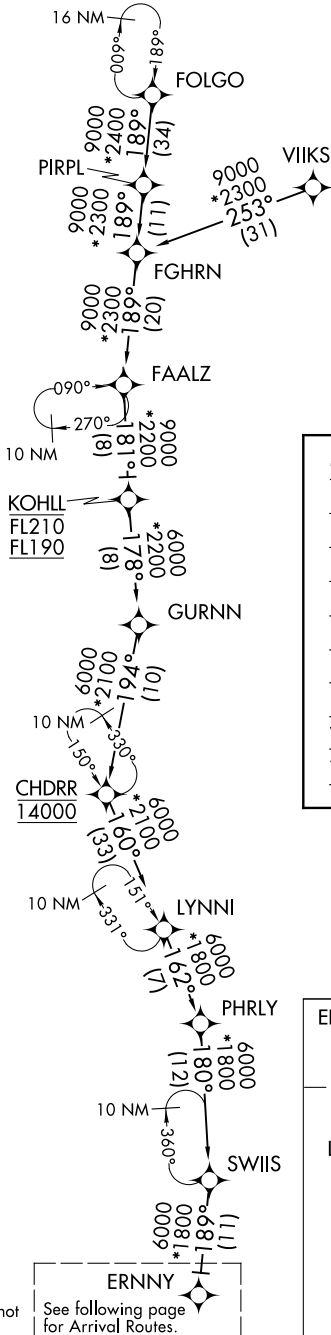


ERNNY SIX ARRIVAL (RNAV) Transition Routes

CHICAGO, ILLINOIS

D-ATIS  
135.4 282.225  
CHICAGO APP CON  
119.0 292.125



- NOTE: RADAR required.
- NOTE: RNAV 1.
- NOTE: DME/DME/IRU or GPS required.
- NOTE: Landing Rwy 4L/R, 22L/R, 27L/R, 28L/C/R: Expect RADAR vectors to final approach course after ERNNY.
- NOTE: YOLUR transition - ATC assigned only.
- NOTE: STASH transition - ATC assigned only.
- NOTE: LYNNI transition: For Milwaukee terminal area departures only.
- NOTE: FOLGO transition: ATC assigned only.

- CHDRR TRANSITION (CHDRR.ERNNY6):
- FAALZ TRANSITION (FAALZ.ERNNY6):
- FGHRN TRANSITION (FGHRN.ERNNY6):
- FOLGO TRANSITION (FOLGO.ERNNY6):
- KOHL TRANSITION (KOHLL.ERNNY6):
- LYNNI TRANSITION (LYNNI.ERNNY6):
- PIRPL TRANSITION (PIRPL.ERNNY6):
- STASH TRANSITION (STASH.ERNNY6):
- VIKTS TRANSITION (VIKTS.ERNNY6):
- YOLUR TRANSITION (YOLUR.ERNNY6):

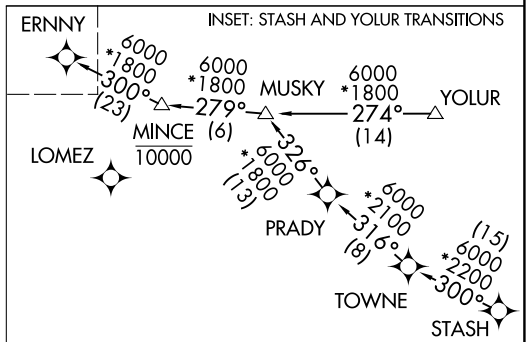
(CONTINUED ON FOLLOWING PAGE)

EC-3, 08 OCT 2020 to 05 NOV 2020

EC-3, 08 OCT 2020 to 05 NOV 2020

NOTE: Chart not to scale.

See following page for Arrival Routes.



ERNNY SIX ARRIVAL (RNAV) Transition Routes