

LOC/DME I-HAC 110.5 Chan 42	APP CRS 273°	Rwy ldg TDZE Apt Elev	7782 654 680
---	------------------------	-----------------------------	---

ILS RWY 27L (SA CAT I)

CHICAGO O'HARE INTL (ORD)

From VOGLR: RNAV 1-GPS required.

Aircraft not GPS equipped - RADAR required for procedure entry. DME or RADAR required.

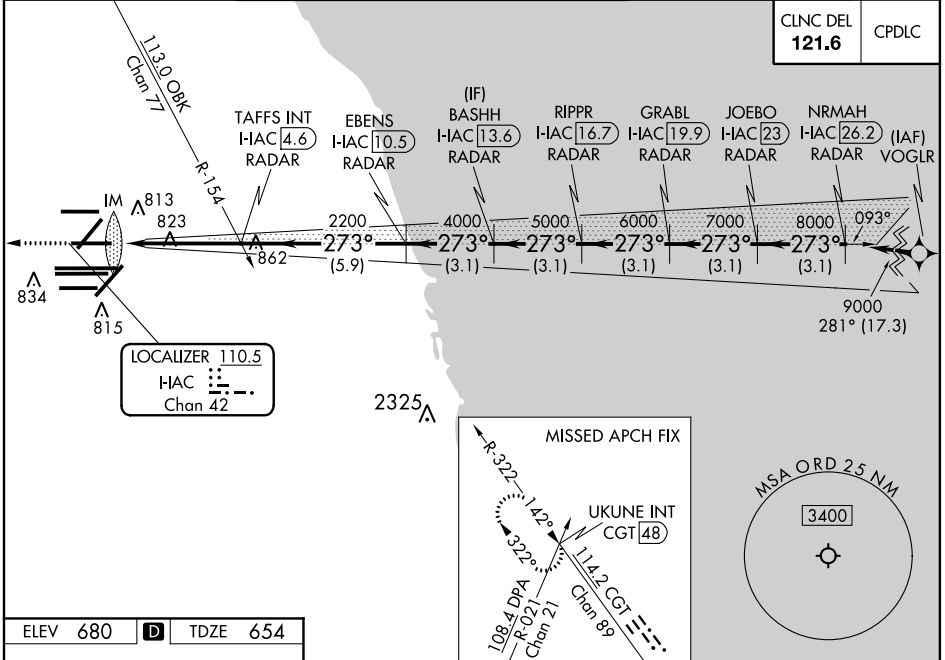
ALSF-2



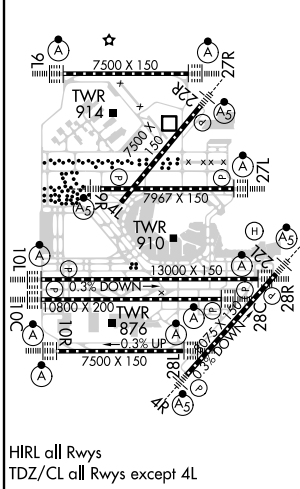
MISSED APPROACH: Climb to 1200 then climbing right turn to 4000 on heading 295° and on CGT VORTAC R-322 to UKUNE INT/CGT 48 DME and hold.

Simultaneous approach authorized.
Requires specific OPSPEC, MSPEC, or LOA approval and use of HUD to DH.

D-ATIS 135.4	CHICAGO APP CON 119.0 292.125	O'HARE TOWERS 128.15 348.0 (Rwy 9L/27R) 133.0 348.0 (10R/28L)	GND CON (TWR CENTER) 124.125	(TWR NORTH) 118.05	(TWR SOUTH) 121.75 (OBND)	(TWR CENTER) 121.75	(OBND) 121.9 (IBND)
282.225	119.0 292.125	120.75 121.15 126.9 132.7 348.0 (CENTER)	226.675 (ALL TWR)				



ELEV 680	D	TDZE 654
----------	----------	----------



1200	4000	CGT R-322	UKUNE INT	VGSI and ILS glidepath not coincident (VGSI Angle 3.00/TCH 67).						
↑	hdg 295°			TAFSS INT I-HAC 4.6 RADAR	EBENS I-HAC 10.5 RADAR	RIPPR I-HAC 16.7 RADAR	GRABL I-HAC 19.9 RADAR	JOEBO I-HAC 23 RADAR	NRMAH I-HAC 26.2 RADAR	
				HAC DME ANTENNA						
				2200	4000	5000	6000	7000	8000	9000
				IM						
				1040'	4.7 NM	5.9 NM	3.1 NM	3.1 NM	3.1 NM	3.1 NM
				CATEGORY A	B	C	D			
				S-ILS 27L	RA 164/14		150 DA 804			

SA CATEGORY I ILS-SPECIAL AIRCREW & AIRCRAFT CERTIFICATION REQUIRED

EC-3, 08 OCT 2020 to 05 NOV 2020

EC-3, 08 OCT 2020 to 05 NOV 2020