

LOC/DME I-VQX <b>110.75</b> Chan 44(Y)	APP CRS <b>274°</b>	Rwy ldg TDZE Apt Elev	<b>7500</b> <b>667</b> <b>680</b>
--	------------------------	-----------------------------	---

# ILS RWY 28L (SA CAT I)

CHICAGO O'HARE INTL (ORD)

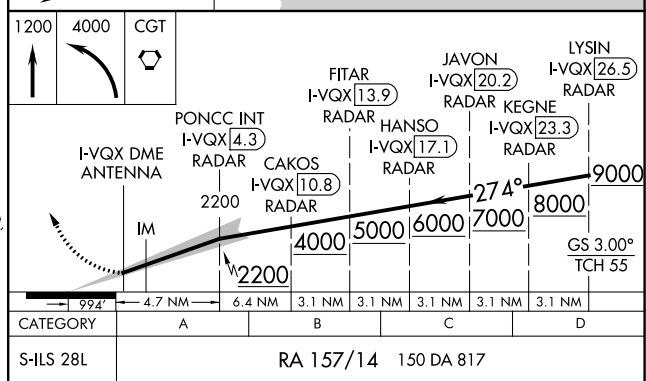
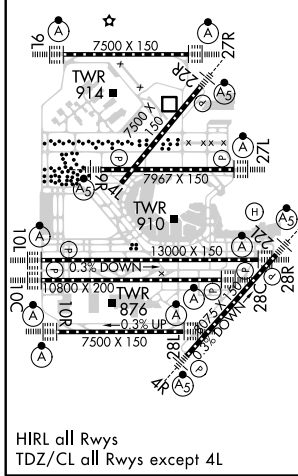
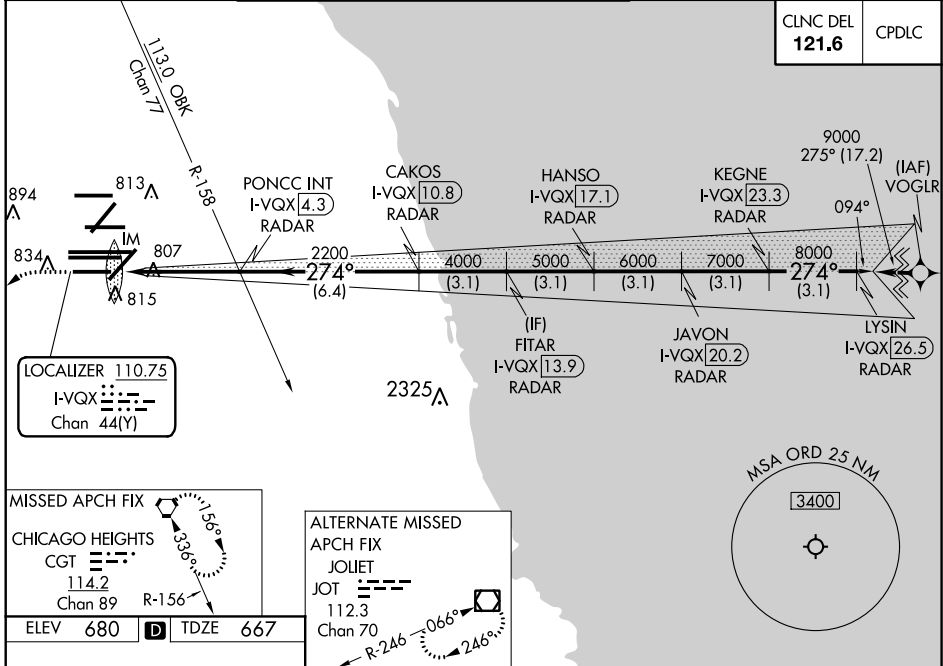
From VOGLR: RNAV 1-GPS required.  
 Aircraft not GPS equipped - RADAR required for procedure entry. DME or RADAR required.  
 Simultaneous approach authorized.  
 Requires specific OPSPEC, MSPEC, or LOA approval and use of HUD to DH.



MISSED APPROACH: Climb to 1200 then climbing left turn to 4000 direct CGT VORTAC and hold.

D-ATIS <b>135.4</b>	CHICAGO APP CON <b>119.0 292.125</b>	O'HARE TOWERS <b>128.15 348.0</b> (Rwy 9L/27R) <b>133.0 348.0</b> (10R/28L) <b>120.75 121.15 126.9 132.7 348.0</b> (CENTER)	GND CON (TWR NORTH) <b>124.125</b> (TWR SOUTH) <b>118.05</b> (ALL TWRs) <b>226.675</b>	(TWR CENTER) <b>121.75</b> (IBND) (IBND) <b>121.9</b>
------------------------	---	---	---	--

CLNC DEL <b>121.6</b>	CPDLC
--------------------------	-------



SA CATEGORY I ILS-SPECIAL AIRCREW & AIRCRAFT CERTIFICATION REQUIRED

EC-3, 08 OCT 2020 to 05 NOV 2020

EC-3, 08 OCT 2020 to 05 NOV 2020