

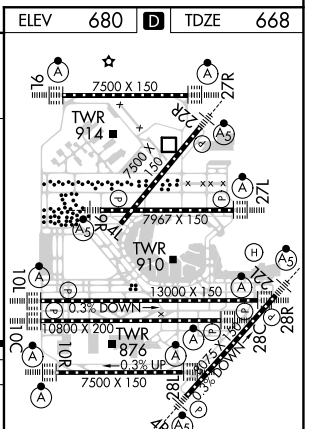
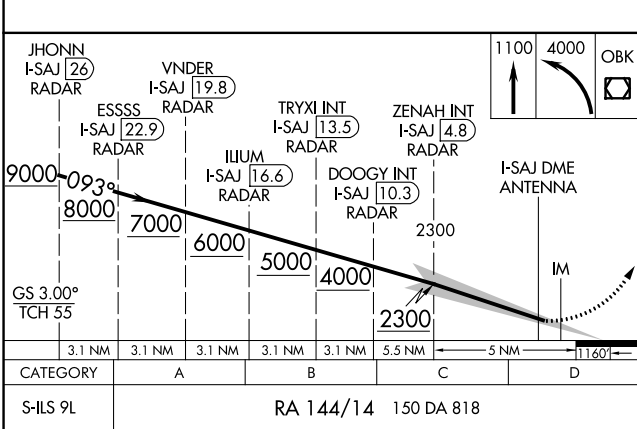
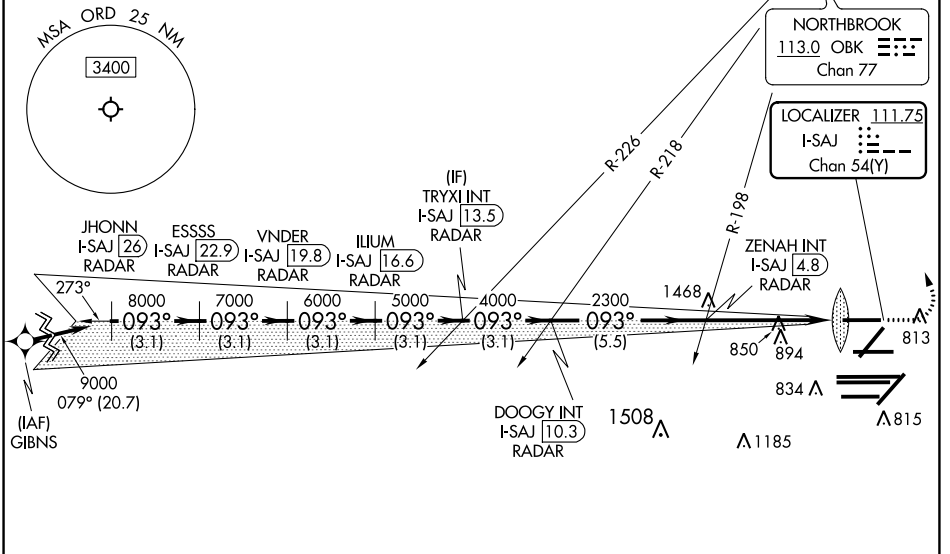
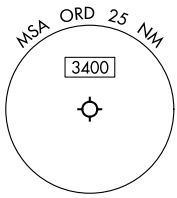
LOC/DME I-SAJ <b>111.75</b> Chan <b>54 (Y)</b>	APP CRS <b>093°</b>	Rwy Idg <b>7500</b> TDZE <b>668</b> Apt Elev <b>680</b>
------------------------------------------------------	------------------------	------------------------------------------------------------------------

**ILS RWY 9L (SA CAT I)**  
CHICAGO O'HARE INTL (ORD)

RNAV-1 GPS or RADAR required for procedure entry. RADAR or DME required.	ALSF-2 	MISSED APPROACH: Climb to 1100 then climbing left turn to 4000 direct OBK VOR/DME and hold, continue climb-in-hold to 4000.	
CHICAGO APP CON <b>119.0 292.125</b>	O'HARE TOWERS <b>128.15 348.0</b> (Rwy 9L/27R) <b>133.0 348.0</b> (10R/28L) <b>120.75 121.15 126.9 132.7 348.0</b> (CENTER)	GND CON (TWR CENTER) <b>121.75</b> (OBND) <b>121.9</b> (IBND)	CLNC DEL <b>121.6</b>

D-ATIS <b>135.4</b> <b>282.225</b>
------------------------------------------

CPDLC
-------



**SA CATEGORY I ILS - SPECIAL AIRCREW & AIRCRAFT CERTIFICATION REQUIRED**

HIRL all Rwys  
TDZ/CL all Rwys except 4L

EC-3, 08 OCT 2020 to 05 NOV 2020

EC-3, 08 OCT 2020 to 05 NOV 2020