

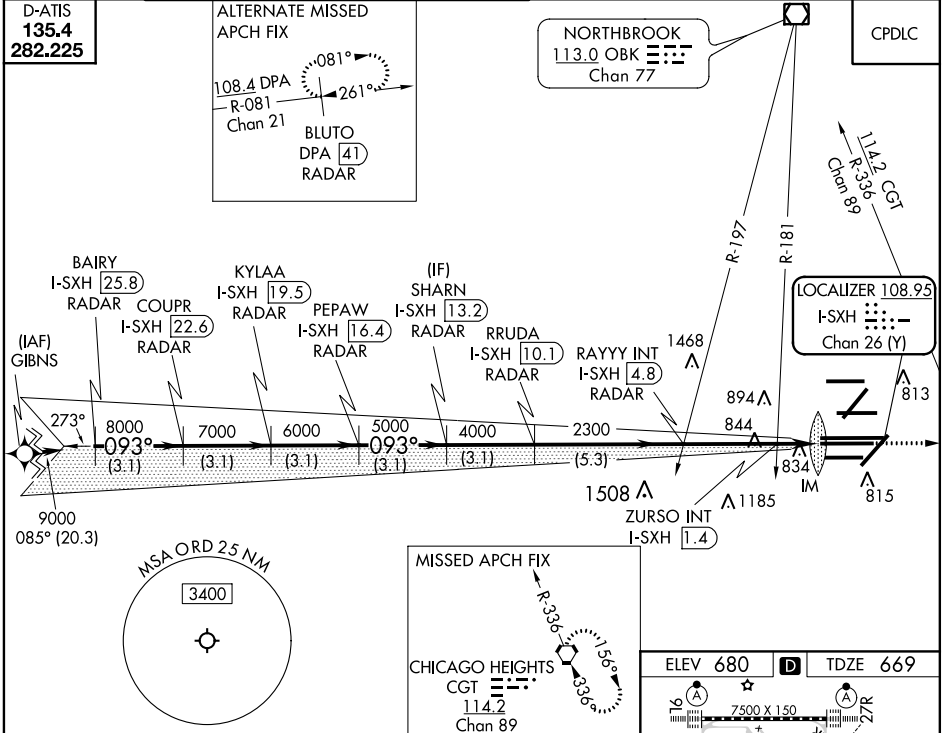
LOC/DME I-SXH 108.95 Chan 26(Y)	APP CRS 093°	Rwy Ldg TDZE 669 Apt Elev 680
--	------------------------	---

ILS or LOC RWY 10C

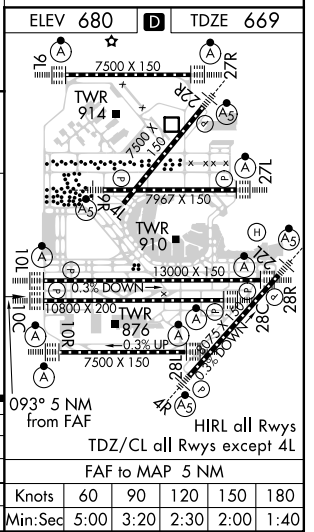
CHICAGO O'HARE INTL (ORD)

From GIBNS: RNAV-1 GPS required. ALSIF-2
 RNAV 1-GPS or RADAR required for procedure entry. DME or RADAR required. MISSED APPROACH: Climb to 4000 on heading 093° and CGT VORTAC R-336 to CGT VORTAC and hold.
 Simultaneous approach authorized.

CHICAGO APP CON 119.0 292.125	O'HARE TOWERS Rwy 9L/27R 128.15 348.0 (110R/28L) 120.75 121.15 126.9 132.7 348.0 (CENTER)	GND CON (TWR NORTH) 124.125 (TWR SOUTH) 118.05 (ALL TWRs) 226.675	(TWR CENTER) 121.75 (OBND) 121.9 (IBND)	CLNC DEL 121.6
---	---	---	---	--------------------------



BAIRY I-SXH [25.8] RADAR	KYLAA I-SXH [19.5] RADAR	SHARN I-SXH [13.2] RADAR	RAYYY INT I-SXH [4.8] RADAR	ZURSO INT I-SXH [1.4] RADAR	I-SXH DME ANTENNA
COUPR I-SXH [22.6] RADAR	PEPAW I-SXH [16.4] RADAR	RRUDA I-SXH [10.1] RADAR	* LOC only		
VGSi and ILS glidepath not coincident KYLAA (VGSi Angle 3.00/TCH 75).					
GS 3.00° TCH 55					
3.1 NM	3.1 NM	3.1 NM	3.1 NM	3.1 NM	0.1 NM
CATEGORY	A		B		D
S-ILS 10C	869/18 200 (200-½)				
S-LOC 10C	1220/24 551 (600-½) 1220/60 551 (600-¼)				
ZURSO FIX MINIMUMS (DUAL VOR RECEIVERS OR DME REQUIRED)					
S-LOC 10C	1100/24 431 (500-½)		1100/40 431 (500-¾)		



EC-3, 08 OCT 2020 to 05 NOV 2020

EC-3, 08 OCT 2020 to 05 NOV 2020