

LOC I-RXZ 111.3	APP CRS 223°	Rwy ldg TDZE 7375 652	Apt Elev 680
---------------------------	------------------------	---	------------------------

ILS or LOC RWY 22R

CHICAGO O'HARE INTL (ORD)

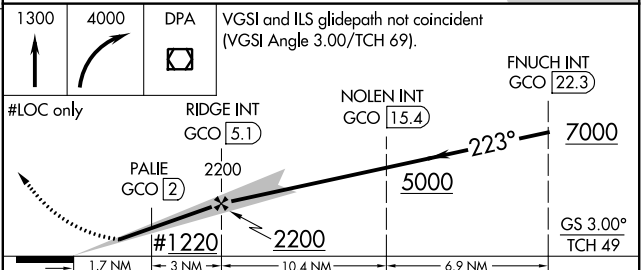
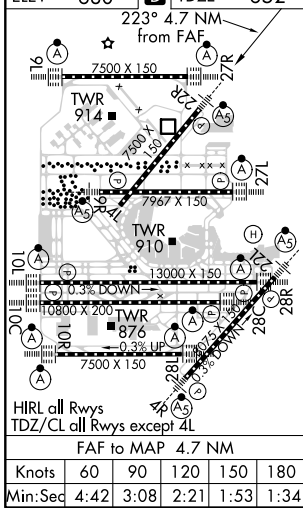
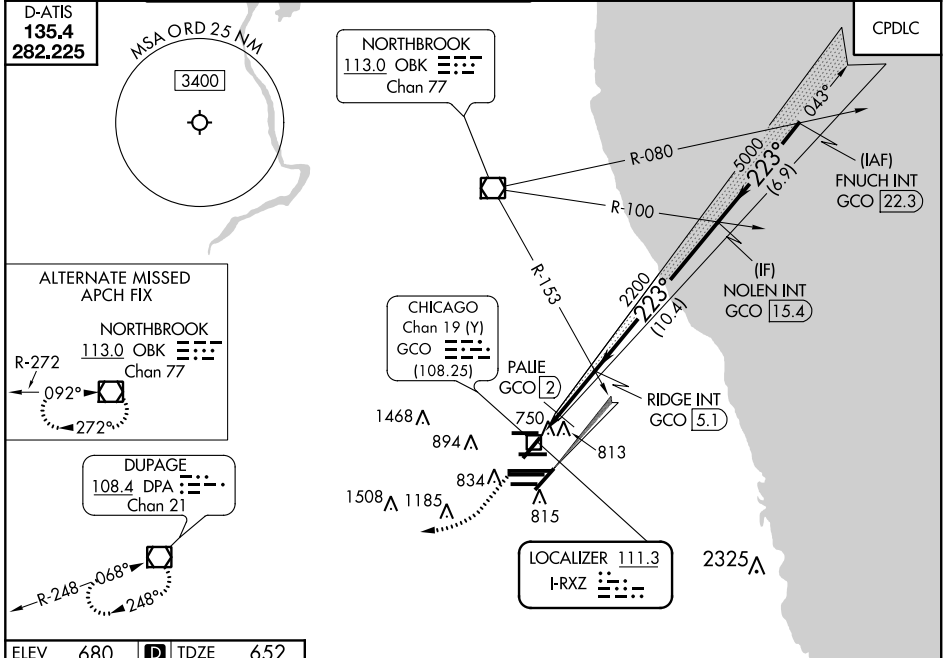
RADAR required for procedure entry.

Simultaneous approach authorized.
*DME from GCO DME.

MALSR

MISSED APPROACH: Climb to 1300 then climbing right turn to 4000 direct DPA VOR/DME and hold.

CHICAGO APP CON 119.0 292.125	O'HARE TOWERS 128.15 348.0 (Rwy 9L/27R) 120.75 121.15 126.9 132.7 348.0 (CENTER)	GND CON (TWR NORTH) 124.125 (TWR SOUTH) 118.05 (ALL TWRs) 226.675	(TWR CENTER) 121.75 (OBND) 121.9 (IBND)	CLNC DEL 121.6
---	--	---	---	--------------------------



CATEGORY	DPA			
	A	B	C	D
S-ILS 22R	852/18 200 (200-1/2)			
S-LOC 22R	1220/24	568 (600-1/2)	1220-1 1/4	568 (600-1 1/4)
C CIRCLING	1220-1	540 (600-1)	1220-1 1/2	1460-2 1/2
*PALIE FIX MINIMUMS				
S-LOC 22R	980/24	328 (300-1/2)	980/26	328 (300-1/2)
C CIRCLING	1220-1	540 (600-1)	1220-1 1/2	1460-2 1/2
			540 (600-1 1/2)	780 (800-2 1/2)

EC-3, 08 OCT 2020 to 05 NOV 2020

EC-3, 08 OCT 2020 to 05 NOV 2020