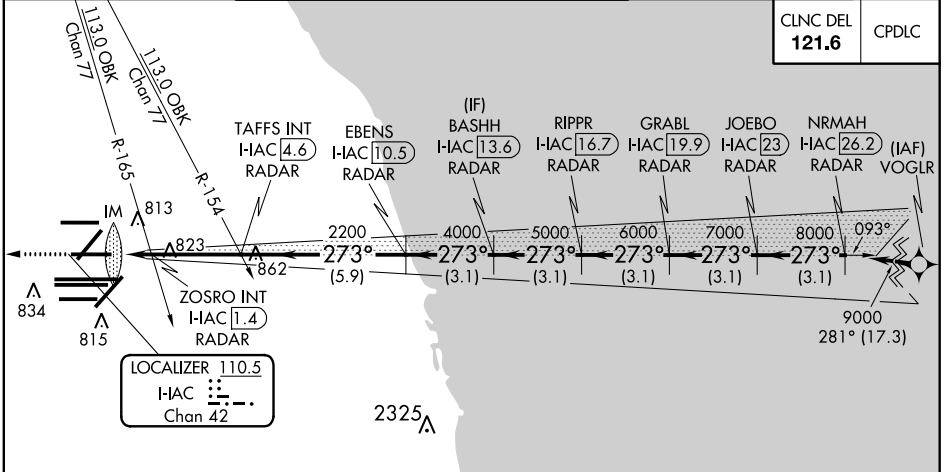


LOC/DME I-IAC 110.5 Chan 42	APP CRS 273°	Rwy ldg 7782 TDZE 654 Apt Elev 680
---	------------------------	--

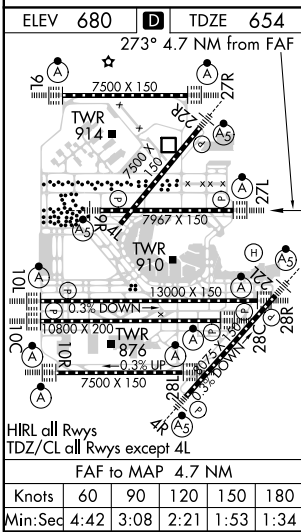
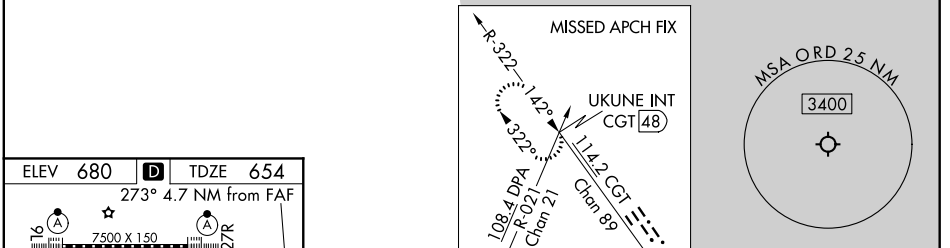
ILS or LOC RWY 27L

CHICAGO O'HARE INTL (ORD)

From VOGLR: RNAV 1-GPS required.	ALSF-2	MISSING APPROACH: Climb to 1200 then climbing right turn to 4000 on heading 295° and on CGT VORTAC R-322 to UKUNE INT/CGT 48 DME and hold.
Aircraft not GPS equipped - RADAR required for procedure entry. DME or RADAR required.		
Simultaneous approach authorized.		
D-ATIS 135.4	CHICAGO APP CON 119.0 292.125	O'HARE TOWERS 128.15 348.0 (Rwy 9L/27R) 133.0 348.0 (10R/28L) 120.75 121.15 126.9 132.7 348.0 (CENTER)
		GND CON (TWR CENTER) 124.125 (TWR NORTH) 121.75 (OBND) 118.05 (TWR SOUTH) 121.9 (IBND) 226.675 (ALL TWS)



CLNC DEL 121.6	CPDLC
--------------------------	-------



ELEV 680	TDZE 654	273° 4.7 NM from FAF								
1200	4000	CGT R-322	UKUNE INT							
*LOC only I-IAC DME ANTENNA I-HAC 0.1 ZOSRO INT I-HAC 1.4 TAFS INT I-HAC 4.6 EBENS I-HAC 10.5 BASHH I-HAC 13.6 RIPPR I-HAC 16.7 GRABL I-HAC 19.9 JOEBO I-HAC 23 NRMAH I-HAC 26.2		VGS1 and ILS glidepath not coincident (VGS1 Angle 3.00/TCH 67). 9000 8000 7000 6000 5000 4000 273° GS 3.00° TCH 55								
		0.1	1.4	3.2 NM	-5.9 NM	3.1 NM	3.1 NM	3.1 NM	3.1 NM	3.1 NM
CATEGORY		A		B		C		D		
S-ILS 27L		1160/24		854/18		200 (200-1/2)				
S-LOC 27L		1160/24		506 (500-1/2)		1160/55		506 (500-1)		
ZOSRO FIX MINIMUMS (DUAL VOR RECEIVERS OR DME REQUIRED)										
S-LOC 27L		1080/24		426 (400-1/2)		1080/40		426 (400-3/4)		

EC-3, 08 OCT 2020 to 05 NOV 2020

EC-3, 08 OCT 2020 to 05 NOV 2020