

LOC/DME I-VQX 110.75 Chan 44(Y)	APP CRS 274°	Rwy ldg TDZE Apt Elev	7500 667 680
---	------------------------	-----------------------------	---

ILS or LOC RWY 28L

CHICAGO O'HARE INTL (ORD)

Aircraft not GPS equipped - RADAR required for procedure entry. DME or RADAR required.
From VOGLR: RNAV 1-GPS required.

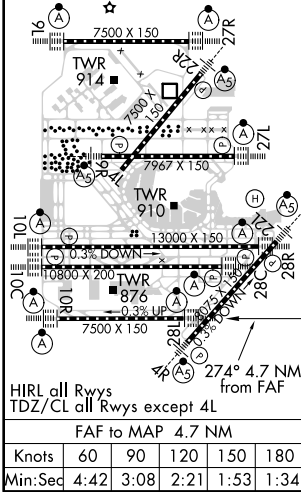
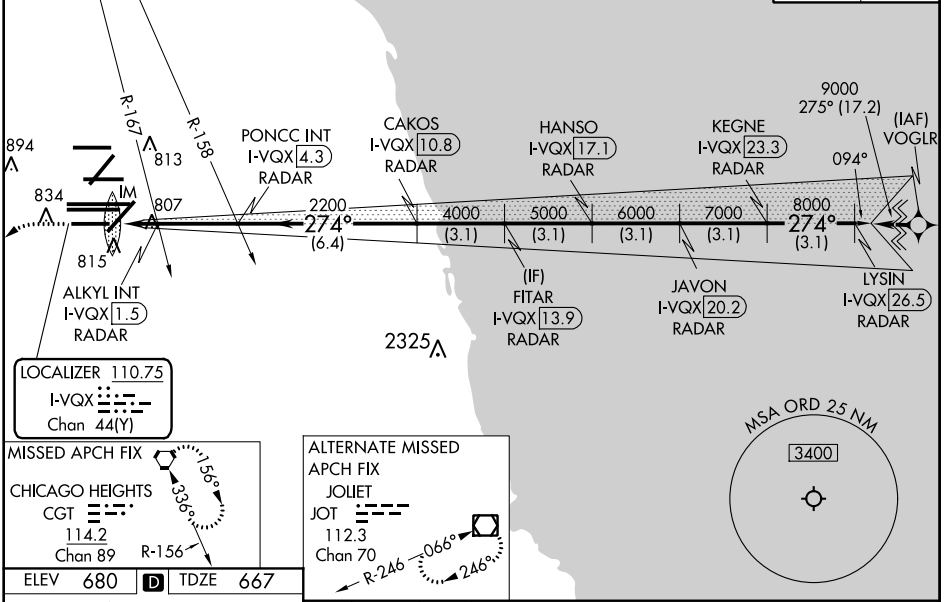
ALSF-2

MISSED APPROACH: Climb to 1200 then climbing left turn to 4000 direct CGT VORTAC and hold.

Simultaneous approach authorized.

D-ATIS 135.4 282.225	CHICAGO APP CON 119.0 292.125	O'HARE TOWERS 128.15 348.0 (Rwy 9L/27R) 133.0 348.0 (10R/28L) 120.75 121.15 126.9 132.7 348.0 (CENTER)	GND CON (TWR CENTER) 124.125 (TWR NORTH) 121.75 (OBND) 118.05 (TWR SOUTH) 121.9 (IBND) 226.675 (ALL TWSR)
--	---	--	--

CNLC DEL 121.6	CPDLC
--------------------------	-------



1200	4000	CGT	*LOC only.				
			FITAR I-VQX [13.9] RADAR	JAVON I-VQX [20.2] RADAR	LYSIN I-VQX [26.5] RADAR		
			PONCC INT I-VQX [4.3] RADAR	HANSO I-VQX [17.1] RADAR	KEGNE I-VQX [23.3] RADAR		
			ALKYL INT I-VQX [1.5] RADAR	CAKOS I-VQX [10.8] RADAR			
			I-VQX [0.3]	I-VQX [0.8]			
			2200	4000	5000	6000	7000
			274°	274°	274°	274°	274°
			2.9 NM	6.4 NM	3.1 NM	3.1 NM	3.1 NM
			3.1 NM	3.1 NM	3.1 NM	3.1 NM	3.1 NM
			S-ILS 28L 867/18 200 (200-½)				
			S-LOC 28L 1240/24 573 (600-½)		1240-1¼ 573 (600-1¼)		
			ALKYL FIX MINIMUMS (DUAL VOR RECEIVERS OR DME REQUIRED)				
			S-LOC 28L 1060/24 393 (400-½)		1060/35 393 (400-½)		

EC-3, 08 OCT 2020 to 05 NOV 2020

EC-3, 08 OCT 2020 to 05 NOV 2020