

# ILS PRM RWY 10C (CLOSE PARALLEL) CHICAGO O'HARE INTL (ORD)

LOC/DME I-SXH <b>108.95</b> Chan 26(Y)	APP CRS <b>093°</b>	Rwy Ldg <b>10540</b> TDZE <b>669</b> Apt Elev <b>680</b>
--	------------------------	--

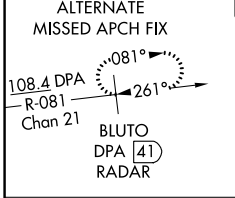
RNAV 1-GPS or RADAR required for procedure entry. DME or RADAR required.  
From GIBNS: RNAV-1 GPS required.

**Simultaneous approach authorized.**  
Use of FD or AP required during simultaneous operations.  
Dual VHF comm required. See additional requirements on AAUP.

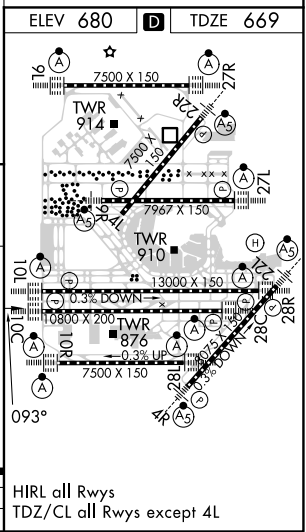
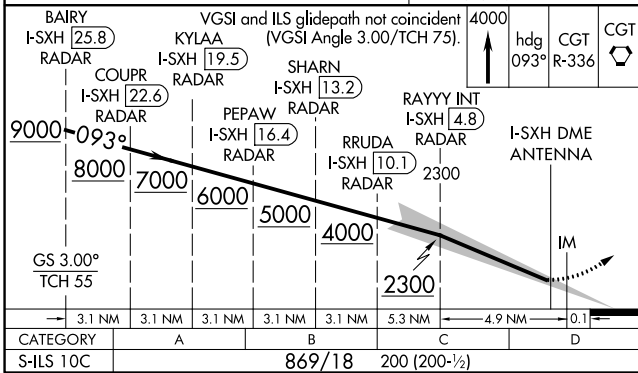
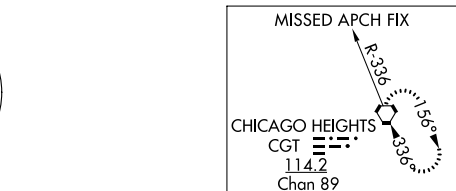
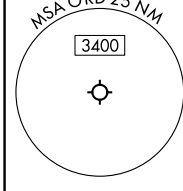
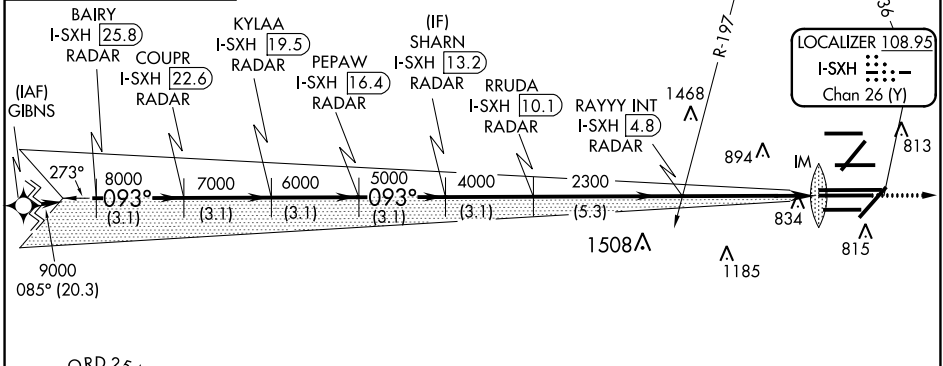
**ALSIF-2**

**MISSED APPROACH:** Climb to 4000 on heading 093° and CGT VORTAC R-336 to CGT VORTAC and hold.

D-ATIS <b>135.4</b> <b>282.225</b>	CHICAGO APP CON <b>119.0 292.125</b>	O'HARE TOWERS <b>128.15 348.0</b> (Rwy 9L/27R) <b>133.0 348.0</b> (10R/28L) <b>120.75 121.15 126.9 132.7 348.0</b> (CENTER) <b>PRM 119.625</b>	GND CON (TWR CENTER) (TWR NORTH) (TWR SOUTH) <b>124.125 118.05 226.675</b> (ALL TWRs) <b>121.75 121.9</b> (OBND) (IBND)
--	---	---	---



CLNC DEL <b>121.6</b>	CPDLC
--------------------------	-------



EC-3, 08 OCT 2020 to 05 NOV 2020

EC-3, 08 OCT 2020 to 05 NOV 2020