

ILS PRM RWY 10C (SA CAT I) (CLOSE PARALLEL)

CHICAGO O'HARE INTL (ORD)

LOC/DME I-SXH 108.95 Chan 26(Y)	APP CRS 093°	Rwy Ldg 10540	TDZE 669
		Apt Elev 680	

RNAV 1-GPS or RADAR required for procedure entry. DME or RADAR required.
From GIBNS: RNAV-1 GPS required.

Requires specific OPSPEC, MSPEC, or LOA approval and use of HUD to DH. Simultaneous approach authorized. Use of FD or AP required during simultaneous operations. Dual VHF comm required. See additional requirements on AAUP.

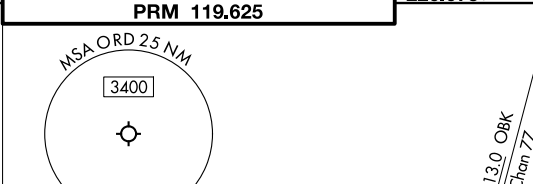
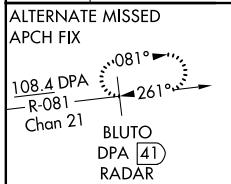


MISSED APPROACH: Climb to 4000 on heading 093° and CGT VORTAC R-336 to CGT VORTAC and hold.

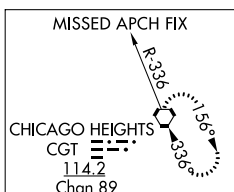
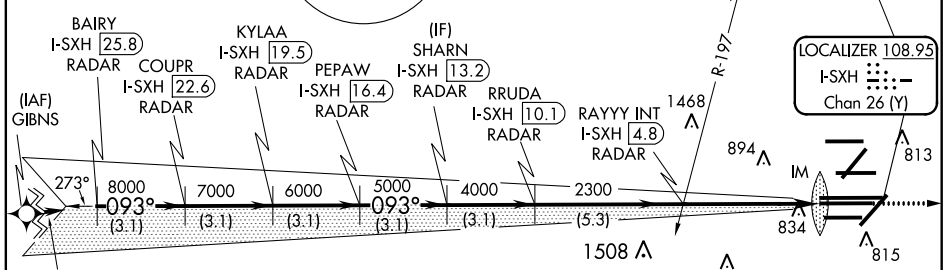
D-ATIS 135.4	CHICAGO APP CON 119.0 292.125
------------------------	-----------------------------------------

O'HARE TOWERS			
128.15	348.0	133.0	348.0 (10R/28L)
120.75	121.15	126.9	132.7 (CENTER)
PRM 119.625			

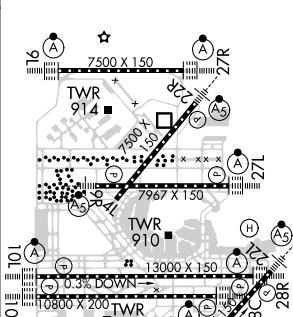
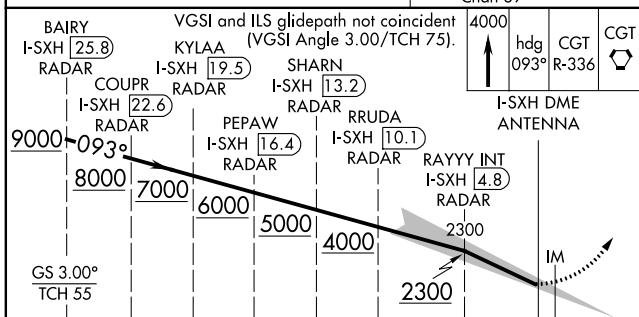
GND CON (TWR NORTH) 124.125	(TWR CENTER) 121.75 (OBND)
(TWR SOUTH) 118.05	(IBND) 121.9
226.675 (ALL TWR)	



CNLC DEL 121.6	CPDLC
--------------------------	-------



ELEV 680	D	TDZE 669
----------	---	----------



→ 3.1 NM	3.1 NM	3.1 NM	3.1 NM	3.1 NM	5.3 NM	5 NM	1091'
CATEGORY	A		B		C		D
S-ILS 10C	RA 148/14		150 DA 819				

SA CATEGORY I ILS - SPECIAL AIRCREW & AIRCRAFT CERTIFICATION REQUIRED

HIRL all Rwsys
TDZ/CL all Rwsys except 4L

EC-3, 08 OCT 2020 to 05 NOV 2020

EC-3, 08 OCT 2020 to 05 NOV 2020