

# ILS PRM RWY 28C (CLOSE PARALLEL) CHICAGO O'HARE INTL (ORD)

LOC/DME I-VZE <b>108.95</b> Chan <b>26 (Y)</b>	APP CRS <b>273°</b>	Rwy ldg <b>10800</b> TDZE <b>651</b> Apt Elev <b>680</b>
--	------------------------	--

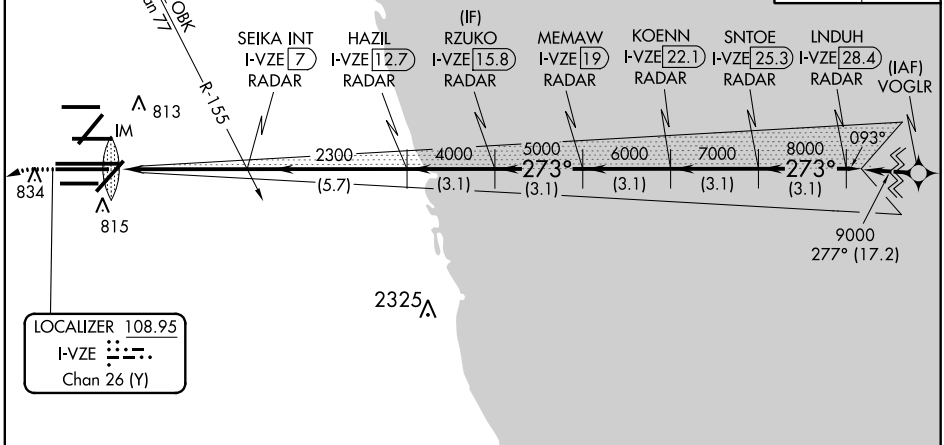
Aircraft not GPS equipped - RADAR required for procedure entry. DME or RADAR required.  
From VOGLR: RNAV 1-GPS required.

Simultaneous approach authorized. Use of FD or AP required during simultaneous operations. Dual VHF comm required. See additional requirements on AAUP.

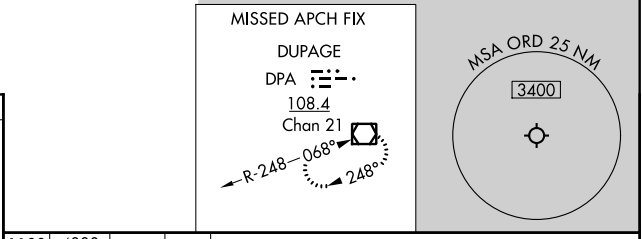
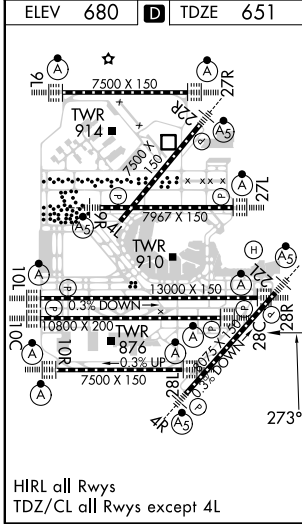
ALSIF-2

MISSED APPROACH: Climb to 1100 then climbing left turn to 4000 on heading 215° and DPA VOR/DME R-082 to DPA VOR/DME and hold.

D-ATIS <b>135.4</b> <b>282.225</b>	CHICAGO APP CON <b>119.0 292.125</b>	O'HARE TOWERS <b>128.15 348.0</b> (Rwy 9L/27R) <b>133.0 348.0</b> (10R/28L) <b>120.75 121.15 126.9 132.7 348.0</b> (CENTER) <b>PRM 119.625</b>	GND CON (TWR CENTER) (TWR NORTH) <b>121.75</b> (OBND) (TWR SOUTH) <b>121.9</b> (IBND) <b>226.675</b> (ALL TWRs)	CLNC DEL <b>121.6</b>	CPDLC
--	---	---	---	--------------------------	-------



ELEV <b>680</b>	<b>D</b>	TDZE <b>651</b>
-----------------	----------	-----------------



1100	4000	DPA R-082	DPA	RZUKO I-VZE 15.8 RADAR	KOENN I-VZE 22.1 RADAR	LNDUH I-VZE 28.4 RADAR		
hdg 215°				SEIKA INT I-VZE 7 RADAR	MEMAW I-VZE 19 RADAR	SNTOE I-VZE 25.3 RADAR		
IM		2300	4000	5000	6000	7000	8000	9000
0.1		4.9 NM	5.7 NM	3.1 NM	3.1 NM	3.1 NM	3.1 NM	GS 3.00° TCH 55
CATEGORY		A	B	C	D	VGSi and ILS glidepath not coincident (VGSi Angle 3.00/TCH 80).		
S-ILS 28C		851/18 200 (200-1/2)						

EC-3, 08 OCT 2020 to 05 NOV 2020

EC-3, 08 OCT 2020 to 05 NOV 2020