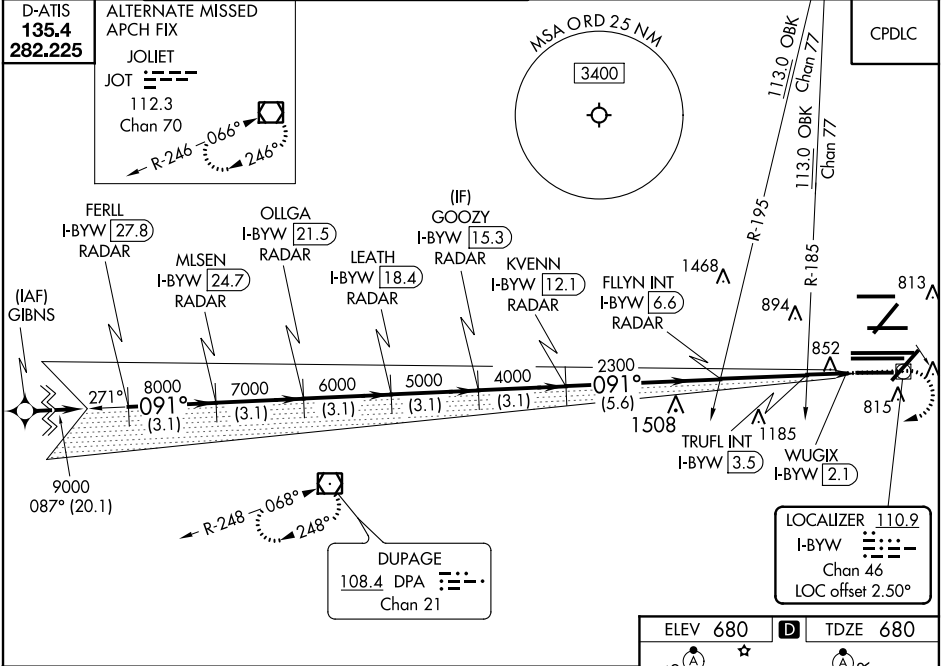


LOC/DME I-BYW <b>110.9</b> Chan 46	APP CRS <b>091°</b>	Rwy Idg 7500 TDZE 680 Apt Elev 680
--	------------------------	---

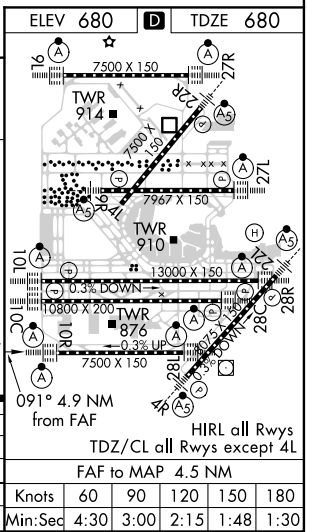
# ILS Y or LOC Y RWY 10R

CHICAGO O'HARE INTL (ORD)

RNAV 1-GPS or RADAR required for procedure entry. DME or RADAR required. From GIBNS: RNAV-1 GPS required.		ALSIF-2 	MISSED APPROACH: Climb to 1200 then climbing right turn to 4000 direct DPA VOR/DME and hold.
CHICAGO APP CON <b>119.0 292.125</b>		O'HARE TOWERS <b>128.15 348.0</b> (Rwy 9L/27R) <b>133.0 348.0</b> (10R/28L) <b>126.9 132.7 348.0</b> (CENTER)	GND CON (TWR CENTER) <b>121.75</b> (OBND) <b>121.9</b> (IBND) (TWR NORTH) <b>124.125</b> (TWR SOUTH) <b>118.05</b> (ALL TWRS) <b>226.675</b>
D-ATIS <b>135.4</b> <b>282.225</b>		CLNC DEL <b>121.6</b>	



FERLL I-BYW RADAR [27.8]	MLSEN I-BYW RADAR [24.7]	OLLGA I-BYW RADAR [21.5]	LEATH I-BYW RADAR [18.4]	GOOZY I-BYW RADAR [15.3]	FLYIN INT I-BYW [6.6]	KVENN I-BYW RADAR [12.1]	TRUFL INT I-BYW [3.5]	WUGIX I-BYW [2.1]
9000 091° 8000 7000 6000 5000 4000 2300 *1220								
GS 3.00° TCH 55								
3.1 NM			3.1 NM			5.6 NM		
CATEGORY A			CATEGORY B			CATEGORY C		
S-ILS 10R			930-3/4 250 (300-3/4)			1220-1 540 (600-1)		
S-LOC 10R			1220-3/4 540 (600-3/4)			1220-1 540 (600-1)		
TRUFL FIX MINIMUMS (DUAL VOR RECEIVERS OR DME REQUIRED)								
S-LOC 10R			1120-3/4 440 (500-3/4)					



EC-3, 08 OCT 2020 to 05 NOV 2020

EC-3, 08 OCT 2020 to 05 NOV 2020