

LOC/DME I-HZJ <b>110.75</b> Chan 44 (Y)	APP CRS <b>094°</b>	Rwy Idg TDZE Apt Elev	<b>7500</b> <b>680</b> <b>680</b>
---	------------------------	-----------------------------	---

# ILS Z RWY 10R (SA CAT I)

CHICAGO O'HARE INTL (ORD)

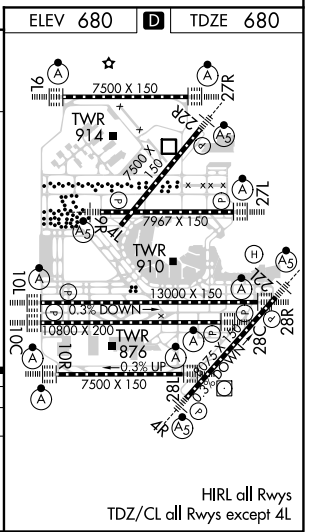
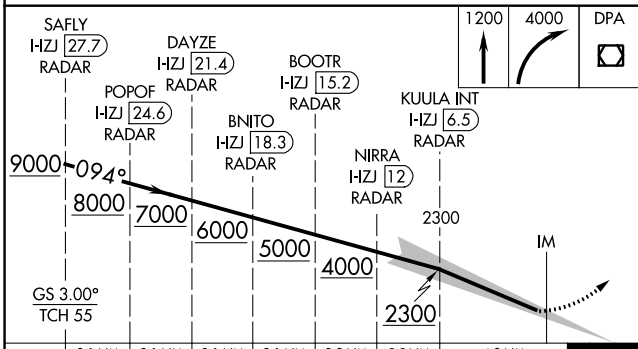
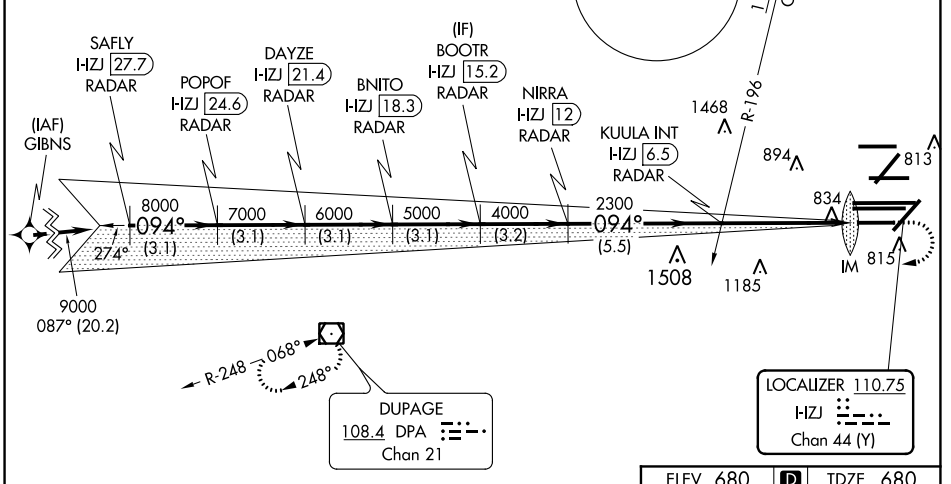
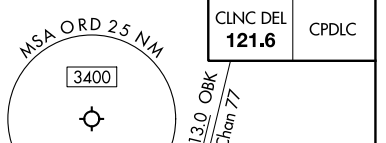
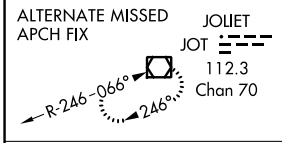
RNAV 1-GPS or RADAR required for procedure entry. DME or RADAR required.  
From GIBNS: RNAV-1 GPS required.

Simultaneous approach authorized. Requires specific OPSPEC, MSPEC, or LOA approval and use of HUD to DH.

ALSF-2

MISSED APPROACH: Climb to 1200 then climbing right turn to 4000 direct DPA VOR/DME and hold.

D-ATIS <b>135.4</b> <b>282.225</b>	CHICAGO APP CON <b>119.0</b> <b>292.125</b>	O'HARE TOWERS (Rwy 9L/27R) <b>128.15</b> <b>348.0</b> <b>120.75</b> <b>121.15</b> <b>126.9</b> <b>132.7</b> <b>348.0</b>	(10R/28L) (CENTER)	GND CON (TWR NORTH) <b>124.125</b> (TWR SOUTH) <b>118.05</b> (ALL TWRS) <b>226.675</b>	(TWR CENTER) (CBIND) <b>121.75</b> (IBND) <b>121.9</b>
--	---	---	-----------------------	--	--



3.1 NM	3.1 NM	3.1 NM	3.1 NM	3.2 NM	5.5 NM	4.9 NM	1113'
CATEGORY A		CATEGORY B		CATEGORY C		CATEGORY D	
S-ILS 10R		RA 165/14		150 DA 830			
<b>SA CATEGORY I ILS-SPECIAL AIRCREW &amp; AIRCRAFT CERTIFICATION REQUIRED</b>							

EC-3, 08 OCT 2020 to 05 NOV 2020

EC-3, 08 OCT 2020 to 05 NOV 2020

HIRL all Rwys  
TDZ/CL all Rwys except 4L