

LOC/DME I-ZJ 110.75 Chan 44 (Y)	APP CRS 094°	Rwy Idg TDZE 7500 680 Apt Elev 680
--	------------------------	--

ILS Z or LOC Z RWY 10R

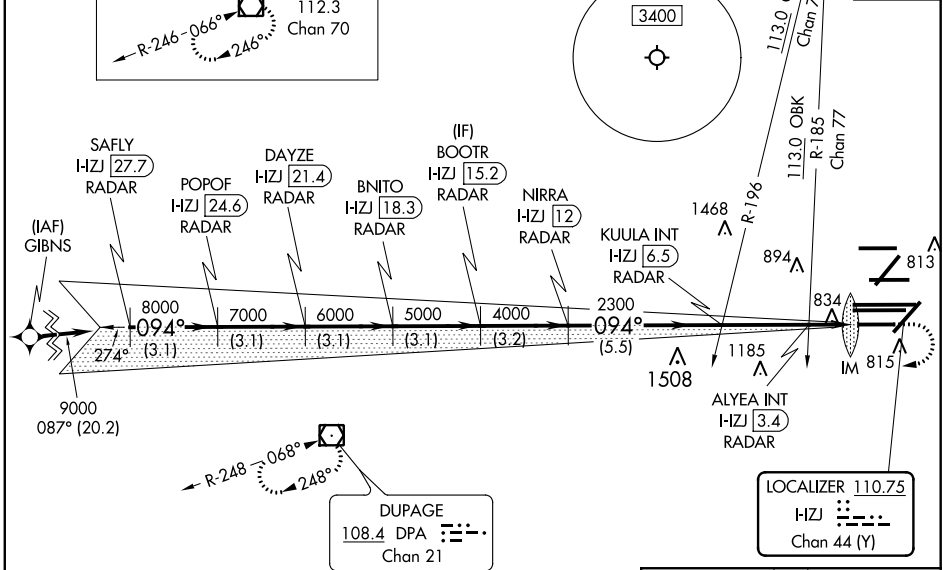
CHICAGO O'HARE INTL (ORD)

RNAV 1-GPS or RADAR required for procedure entry. DME or RADAR required.
From GIBNS: RNAV-1 GPS required.
Simultaneous approach authorized.
For inop ALS, increase S-LOC 10R Cat C and D visibility to RVR 6000.

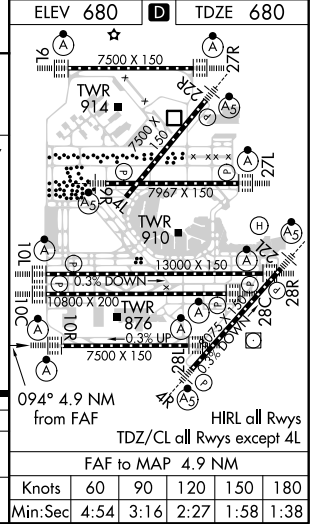
ALSF-2
MISSED APPROACH: Climb to 1200 then climbing right turn to 4000 direct DPA VOR/DME and hold.

CHICAGO APP CON 119.0 292.125	O'HARE TOWERS 128.15 348.0 (Rwy 9L/27R) 126.9 132.7 348.0 (CENTER)	GND CON (TWR CENTER) 121.75 (OBND) 121.9 (BND)	CLNC DEL 121.6
---	--	--	--------------------------

D-ATIS 135.4 282.225	ALTERNATE MISSED APCH FIX	JOLIET JOT 112.3 Chan 70	CPDLC
--	---------------------------	--------------------------------	-------



SAFLY I-ZJ [27.7] RADAR	DAYZE I-ZJ [21.4] RADAR	BOOTR I-ZJ [15.2] RADAR	1200	4000	DPA
POPOF I-ZJ [24.6] RADAR	BNITO I-ZJ [18.3] RADAR	NIIRRA I-ZJ [12] RADAR	↑	↷	☐
9000 → 094°	8000 → 094°	7000 → 094°	*LOC only		
6000 → 094°	5000 → 094°	4000 → 094°	2300 → 094°		
3.1 NM	3.1 NM	3.1 NM	3.1 NM	3.2 NM	5.5 NM
GS 3.00° TCH 55			*1220		
CATEGORY			A	B	C
S-ILS 10R			880/18		200 (200-½)
S-LOC 10R			1100/24		420 (500-½)



EC-3, 08 OCT 2020 to 05 NOV 2020

EC-3, 08 OCT 2020 to 05 NOV 2020