

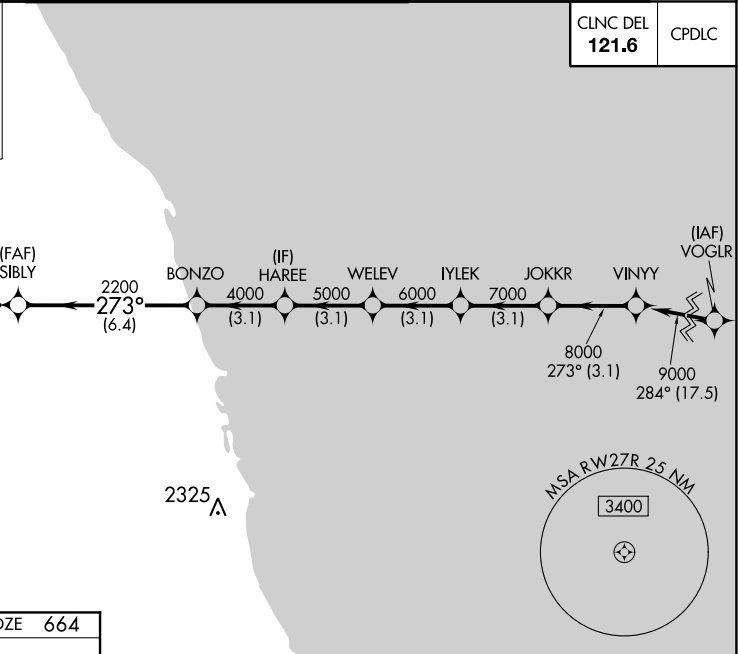
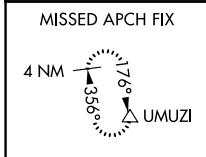
WAAS CH 69508 W27B	APP CRS 273°	Rwy Idg TDZE Apt Elev	7500 664 680
--	------------------------	-----------------------------	---

RNAV (GPS) RWY 27R

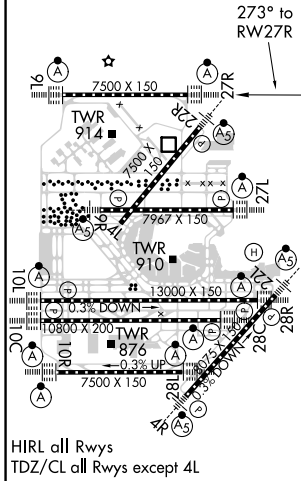
CHICAGO O'HARE INTL (ORD)

RNP APCH.	ALSIF-2 	MISSED APPROACH: Climb to 1100 then climbing right turn to 4000 direct UMUZI and hold.
RADAR required for procedure entry.		
▼ For uncompensated Baro-VNAV systems, procedure NA below -19°C or above 54°C. Simultaneous approach authorized. LNAV procedure NA during simultaneous operations. Use of FD or AP providing RNAV track guidance required during simultaneous operations.		

D-ATIS 135.4	CHICAGO APP CON 119.0 292.125	O'HARE TOWERS			GND CON	(TWR CENTER)
282.225		128.15 348.0 (Rwy 9L/27R)	133.0 348.0 (10R/28L)	124.125 (TWR NORTH)	121.75 (OBND)	
		120.75 121.15 126.9 132.7 348.0 (CENTER)		118.05 (TWR SOUTH)	121.9 (IBND)	
				226.675 (ALL TWRS)		



ELEV 680	D	TDZE 664
----------	----------	----------



1100	4000	UMUZI					
* LNAV only.							
		SIBLY	BONZO	HAREE	WELEV	IYLEK	JOKKR
		2200	4000	5000	6000	7000	8000
							VINYY
							9000
							GP 3.00° TCH 55
1.2	3.5	6.4 NM	3.1 NM	3.1 NM	3.1 NM	3.1 NM	3.1 NM
CATEGORY	A		B		C		D
LPV DA			864/18		200 (200-½)		
LNAV/VNAV DA			961/24		297 (300-½)		
LNAV MDA	1120/24		456 (500-½)		1120/45		456 (500-¾)