

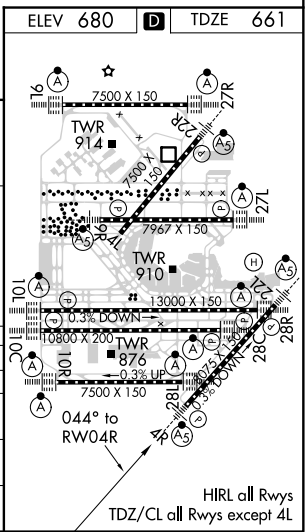
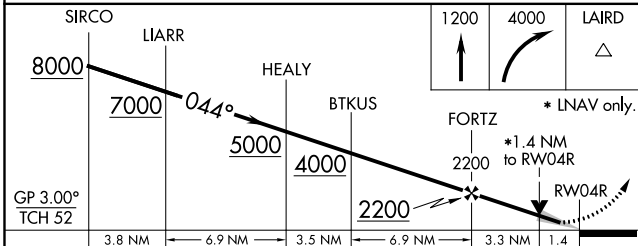
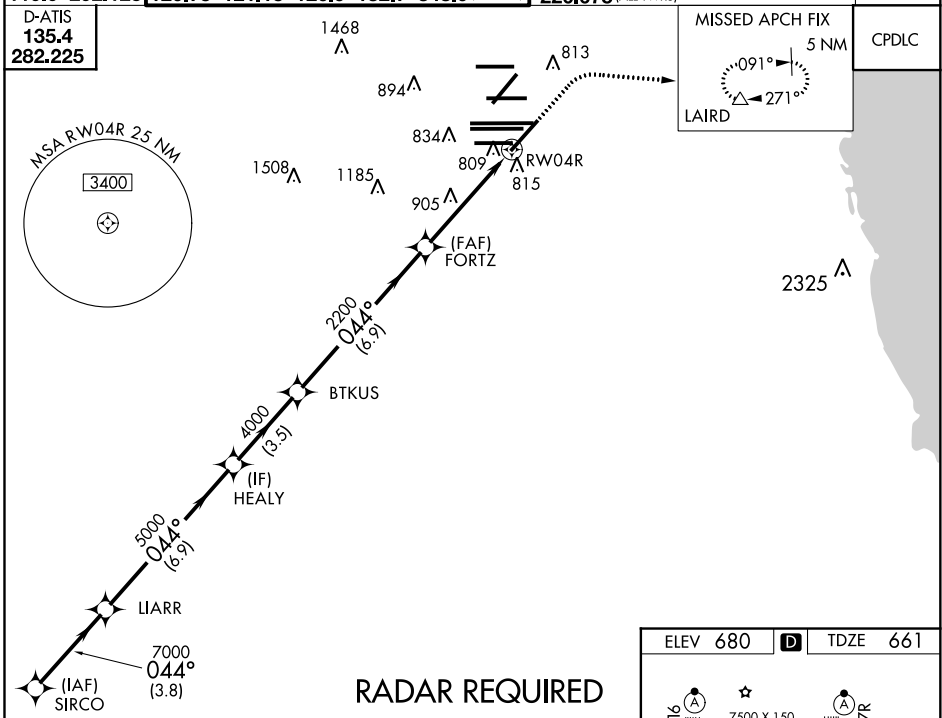
WAAS CH 81929 W04A	APP CRS 044°	Rwy Idg 8075 TDZE 661 Apt Elev 680
--	------------------------	---

RNAV (GPS) RWY 4R

CHICAGO O'HARE INTL (ORD)

<p>▽ For uncompensated Baro-VNAV systems, LNAV/VNAV NA below -22°C (-7°F) or above 39°C (102°F). Simultaneous approach authorized with Rwy 4L. DME/DME RNP-0.3 NA. LNAV procedure NA during simultaneous operations. Use of FD or AP providing RNAV track guidance required during simultaneous operations.</p>	<p>MALSR</p>	<p>MISSED APPROACH: Climb to 1200 then climbing right turn to 4000 direct LAIRD and hold, continue climb-in-hold to 4000.</p>
--	--------------	---

CHICAGO APP CON 119.0 292.125	O'HARE TOWERS 128.15 348.0 (Rwy 9L/27R) 133.0 348.0 (10R/28L) 120.75 121.15 126.9 132.7 348.0 (CENTER)	GND CON (TWR NORTH) 124.125 (TWR SOUTH) 118.05 (ALL TWRs) 226.675	(TWR CENTER) 121.75 (OBND) (IBND) 121.9	CLNC DEL 121.6
---	--	--	--	--------------------------



ELEV 680	TDZE 661				
RADAR REQUIRED					
SIRCO	LIARR	HEALY	BTJKUS	FORTZ	RW04R
8000	7000	5000	4000	2200	
GP 3.00°					
TCH 52					
	3.8 NM	6.9 NM	3.5 NM	6.9 NM	3.3 NM
CATEGORY	A	B	C	D	
LPV DA		861/18	200 (200-½)		
LNAV/VNAV DA		990/32	329 (400-¾)		
LNAV MDA	1160/24	499 (500-½)	1160/50	499 (500-1)	
CIRCLING	1220-1	540 (600-1)	1220-1½ 540 (600-1½)	1460-2½ 780 (800-2½)	

EC-3, 08 OCT 2020 to 05 NOV 2020

EC-3, 08 OCT 2020 to 05 NOV 2020