

RNAV (GPS) PRM Y RWY 10R

(CLOSE PARALLEL)

CHICAGO O'HARE INTL (ORD)

WAAS CH 77937 W10D	APP CRS 090°	Rwy Idg TDZE Apt Elev	7500 680 680
--	------------------------	-----------------------------	---

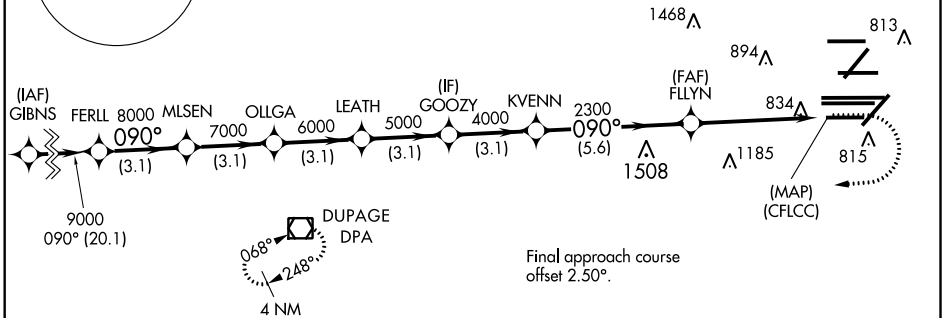
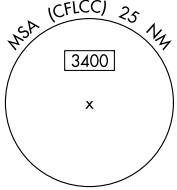
⚠ DME/DME RNP-0.3 NA. Simultaneous approach authorized. Dual VHF comm required. See additional requirements on AAUP. For uncompensated Baro-VNAV systems, LNAV/VNAV NA below -19°C (-2°F) or above 54°C (130°F). Use of FD or AP providing RNAV track guidance required during simultaneous operations. Inop table does not apply to LPV all Cats. Rwy 10R helicopter visibility reduction below ¾ SM NA.

ALSF-2

MISSED APPROACH: Climb to 1200 then climbing right turn to 4000 direct DPA VOR/DME and hold.

D-ATIS 135.4 282.225	CHICAGO APP CON 119.0 292.125	O'HARE TOWERS 128.15 348.0 (Rwy 9L/27R) 133.0 348.0 (10R/28L) 120.75 121.15 126.9 132.7 348.0 (CENTER) PRM 128.05	GND CON (TWR CENTER) 124.125 (TWR NORTH) 121.75 (OBND) (TWR SOUTH) 121.9 (IBND) 226.675 (ALL TWRS)
--	---	--	--

CLNC DEL 121.6	CPDLC
--------------------------	-------

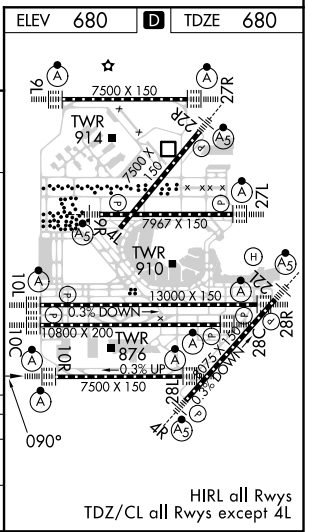


EC-3, 08 OCT 2020 to 05 NOV 2020

EC-3, 08 OCT 2020 to 05 NOV 2020

RADAR REQUIRED

		1200	4000	DPA			
FERLL	MLSEN	OLLGA	LEATH	GOOZY	KVENN	FLLYN	(CFLCC)
9000	8000	7000	6000	5000	4000	2300	
GP 3.00							
TCH 55							
	3.1 NM	3.1 NM	3.1 NM	3.1 NM	3.1 NM	5.6 NM	4.9 NM
CATEGORY	A		B		C		D
LPV	DA		930-¾		250 (300-¾)		
LNAV/VNAV	DA		1157-1½		477 (500-1½)		



RNAV (GPS) PRM Y RWY 10R (CLOSE PARALLEL)

HIRL all Rwys
TDZ/CL all Rwys except 4L