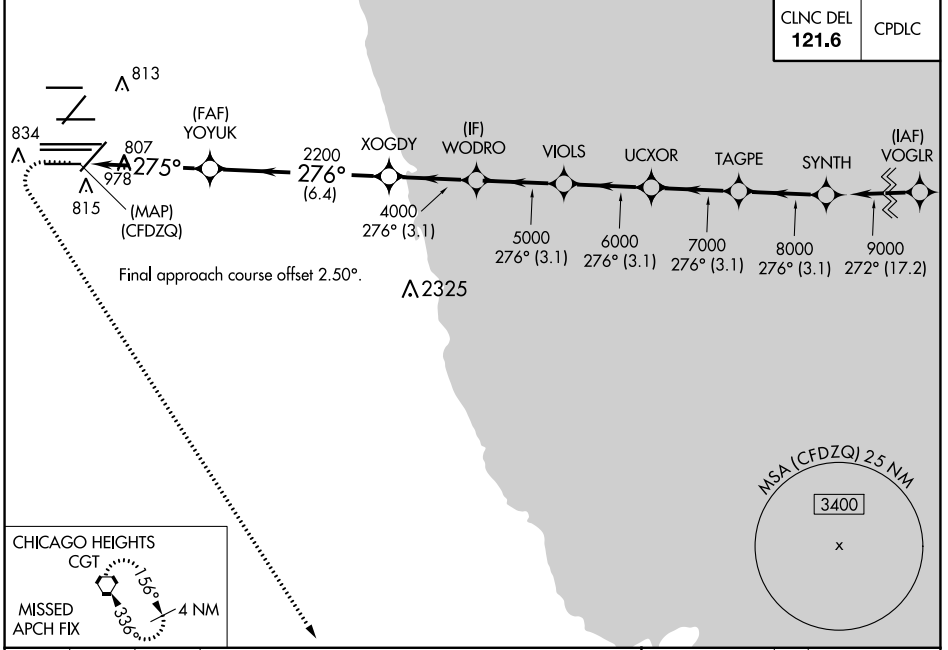


WAAS CH 93839 W28E	APP CRS 275°	Rwy Idg TDZE 667 Apt Elev 680	7500 667 680
--	------------------------	---	---

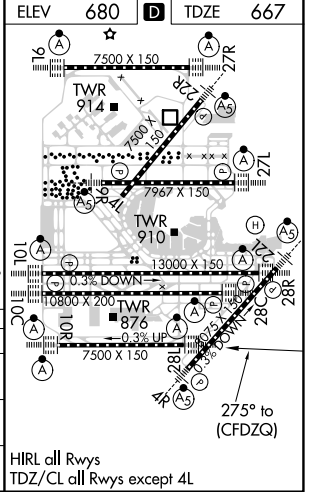
RNAV (GPS) Y RWY 28L

CHICAGO O'HARE INTL (ORD)

RNP APCH: ▼ Simultaneous approach authorized. LNAV procedure NA during simultaneous operations. For uncompensated Baro-VNAV systems, LNAV/VNAV NA below -19°C or above 54°C. Use of FD or AP required during simultaneous operations.		ALSF-2 	MISSED APPROACH: Climb to 1200 then climbing left turn to 4000 direct CGT VORTAC and hold.
D-ATIS 135.4 282.225	CHICAGO APP CON 119.0 292.125	O'HARE TOWERS 128.15 348.0 (Rwy 9L/27R) 133.0 348.0 (10R/28L) 120.75 121.15 126.9 132.7 348.0 (CENTER)	GND CON (TWR CENTER) 121.75 (OBND) (TWR NORTH) 118.05 (TWR SOUTH) 121.9 (IBND) 226.675 (ALL TWRs)



1200	4000	CGT	SYNTH
*LNAV only			
1.1	3.6 NM	6.4 NM	3.1 NM
YOYUK	XOGDY	WODRO	VIOLS
2200	4000	5000	6000
UCXOR	TAGPE	SYNTH	9000
275°	276° (3.1)	276° (3.1)	276° (3.1)
GP 3.00°	TCH 55		
DA	MDA	MDA	MDA
917/24	393 (400-½)	1060/35	393 (400-⅝)
250 (300-½)	423 (500-¾)		



EC-3, 08 OCT 2020 to 05 NOV 2020

EC-3, 08 OCT 2020 to 05 NOV 2020