

WAAS CH 77804 W27A	APP CRS 273°	Rwy Idg TDZE Apt Elev	7782 654 680
--	------------------------	-----------------------------	---

RNAV (GPS) Z RWY 27L

CHICAGO O'HARE INTL (ORD)

▼ For uncompensated Baro-VNAV systems, LNAV/VNAV NA below -19°C (-2°F) or above 54°C (130°F). Simultaneous approach authorized. DME/DME RNP-0.3 NA. LNAV procedure NA during simultaneous operations. Use of FD or AP providing RNAV track guidance required during simultaneous operations. For inop ALSF-2, increase LNAV Cat C/D visibility to 1½ mile.

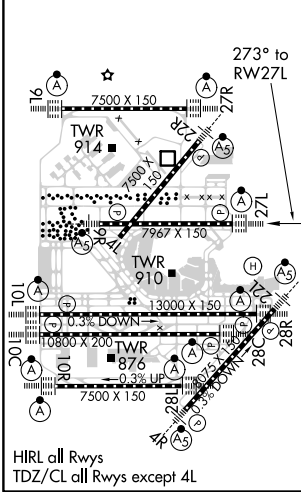
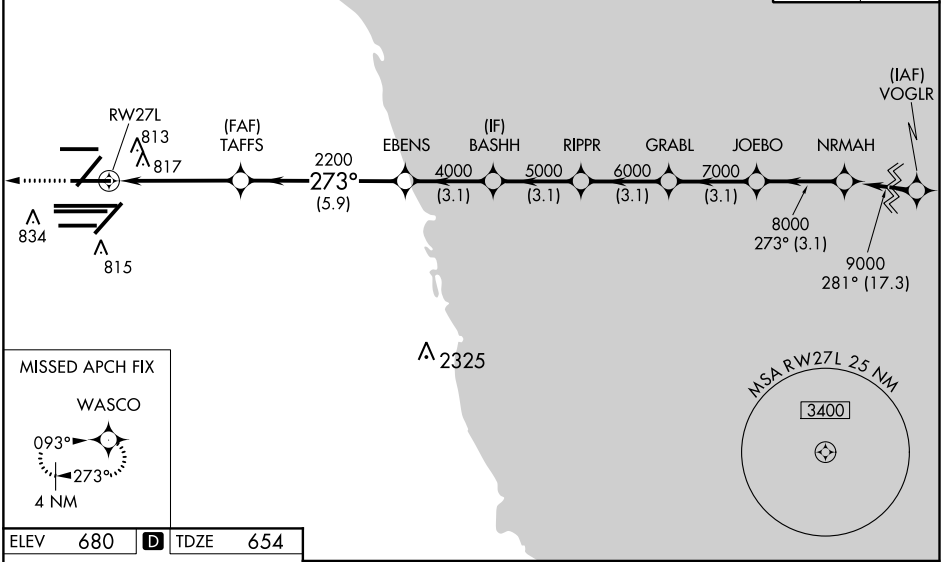
ALSF-2

MISSED APPROACH:
Climb to 4000 direct
WASCO and hold.

D-ATIS 135.4 282.225	CHICAGO APP CON 119.0 292-125	O'HARE TOWERS 128.15 348.0 (Rwy 9L/27R) 133.0 348.0 (10R/28L) 120.75 121.15 126.9 132.7 348.0 (CENTER)	GND CON (TWR CENTER) 124.125 (TWR NORTH) 121.75 (OBND) 118.05 (TWR SOUTH) 121.9 (IBND) 226.675 (ALL TWSR)
--	--	---	---

RADAR REQUIRED

CLNC DEL 121.6	CPDLC
--------------------------	-------



ELEV 680	D	TDZE 654		
4000	WASCO	VGSI and RNAV glidepath not coincident (VGSI Angle 3.00/TCH 67).		
*LNAV only.		NRMAH 9000		
*1.3 NM to RWY 27L		GRABL 7000		
2200		JOEBO 8000		
1.3 3.4 NM ← 5.9 NM		RIPPR 6000		
3.1 NM 3.1 NM 3.1 NM 3.1 NM 3.1 NM		BASHH 5000		
3.1 NM		EBENS 4000		
3.1 NM		TAFS 2200		
CATEGORY	A	B	C	D
LPV DA	854/18		200 (200-½)	
LNAV/VNAV DA	1125/60		471 (500-1¼)	
LNAV MDA	1120/24		466 (500-½)	
	1120/50		466 (500-1)	
	GP 3.00°		TCH 55	

EC-3, 08 OCT 2020 to 05 NOV 2020

EC-3, 08 OCT 2020 to 05 NOV 2020