

WAAS CH <b>58126</b> <b>W24A</b>	APP CRS <b>244°</b>	Rwy Idg TDZE Apt Elev	<b>3856</b> <b>545</b> <b>546</b>
--	------------------------	-----------------------------	---

# RNAV (GPS) RWY 24

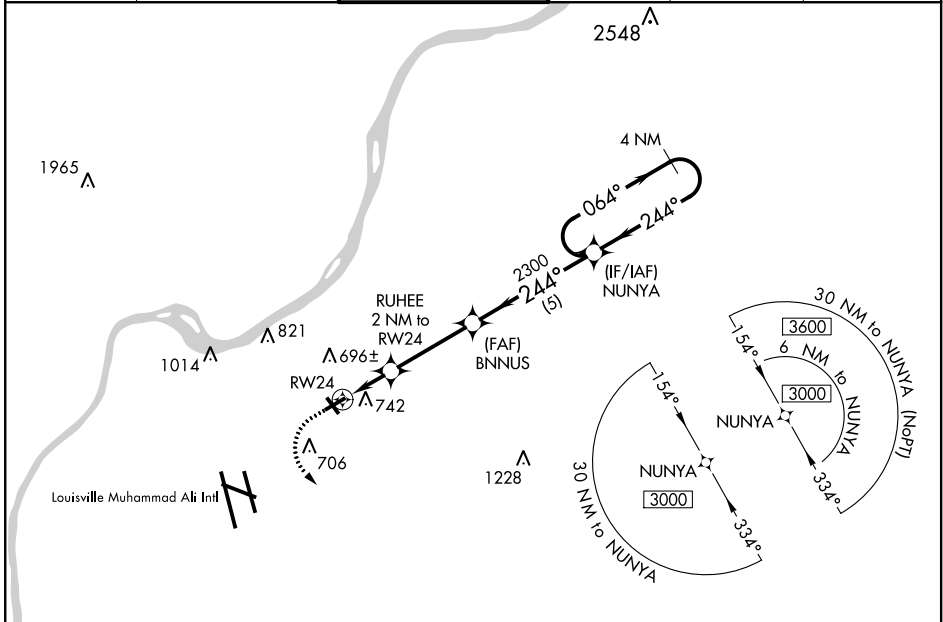
BOWMAN FIELD (LOU)

RNP APCH.

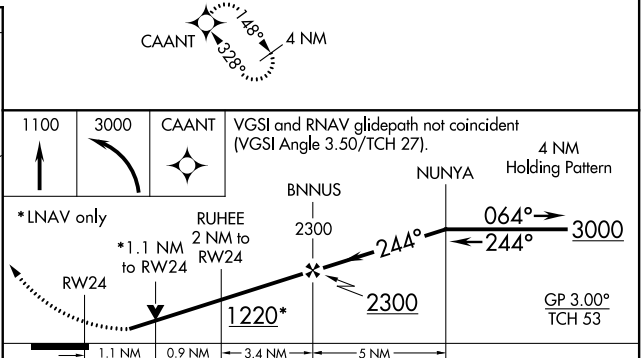
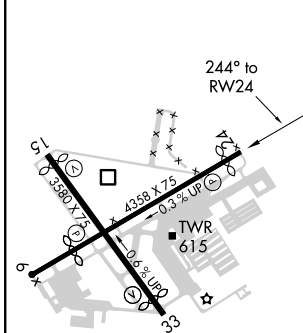
**⚠** VDP NA with Louisville Muhammad Ali Intl altimeter setting. When local altimeter setting not received, use Louisville Muhammad Ali Intl altimeter setting. Rwy 24 helicopter visibility reduction below 3/4 SM NA. Circling Rwy 6, 15, 33 NA at night.

**⚠** MISSED APPROACH: Climb to 1100 then climbing left turn to 3000 direct CAANT and hold.

ATIS <b>124.15</b>	LOUISVILLE APP CON <b>132.075 327.0</b>	<b>BOWMAN TOWER*</b> <b>119.5 (CTAF) 257.625</b>	GND CON <b>121.8</b>	CLNC DEL <b>118.9</b>	UNICOM <b>122.95</b>
-----------------------	--	---	-------------------------	--------------------------	-------------------------



ELEV <b>546</b>	<b>D</b>	TDZE <b>545</b>
-----------------	----------	-----------------



CATEGORY	A	B	C	D
LPV DA	830-7/8	285 (300-7/8)		NA
LNAV/VNAV DA	1025-1 1/8	480 (500-1 1/8)		NA
LNAV MDA	1000-1	455 (500-1)		NA
<b>C</b> CIRCLING	1060-1 514 (600-1)	1080-1 534 (600-1)		NA

REIL Rws 24 and 33  
MIRL Rws 6-24 and 15-33

SE-1, 08 OCT 2020 to 05 NOV 2020

SE-1, 08 OCT 2020 to 05 NOV 2020