

LOC/DME I-MRY <b>110.7</b> Chan <b>44</b>	APP CRS <b>098°</b>	Rwy ldg <b>7000</b> TDZE <b>198</b> Apt Elev <b>257</b>
---	------------------------	---

# ILS or LOC RWY 10R

MONTEREY RGNL (MRY)

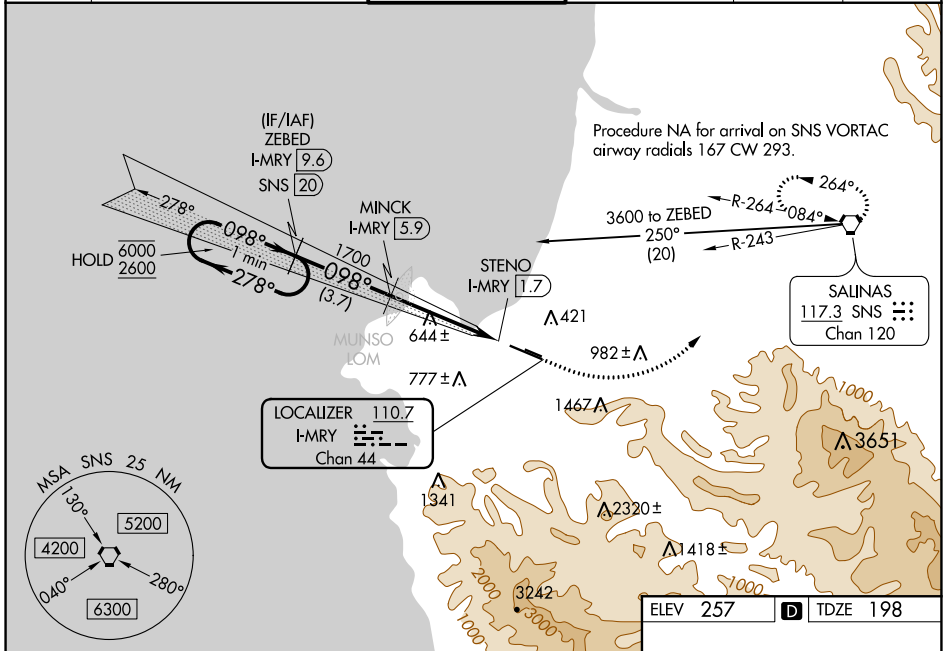
DME required.

**▼** Circling NA south of Rwy 10R-28L.  
**▲** For inop ALS, increase S-ILS 10R all Cats visibility to RVR 6000, and increase S-LOC 10R Cat C and D visibility to 2 SM.

MALSRL 45

MISSED APPROACH: Climb to 600 then climbing left turn to 5000 on heading 030° and on SNS VORTAC R-243 to SNS VORTAC and hold, continue climb-in-hold to 5000. # Missed approach requires minimum climb of 265 feet per NM to 1360.

ATIS <b>119.25</b>	NORCAL APP CON <b>133.0 251.15</b> (360°-150°) <b>127.15 307.125</b> (151°-359°)	MONTEREY TOWER * <b>118.4</b> (CTAF) <b>257.8</b>	GND CON <b>120.875 348.6</b>	CLNC DEL <b>135.45</b>	UNICOM <b>122.95</b>
-----------------------	--	--	---------------------------------	---------------------------	-------------------------



ILS unusable from 1.7 DME inbound.

One Minute Holding Pattern

ZEBED I-MRY [9.6]      MINCK I-MRY [5.9]

600      5000      SNS

↑      hdg 030°      R-243

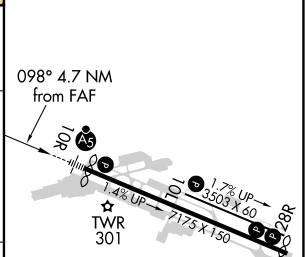
6000 ← 278°      1700      \*I-MRY [3.4]      \*LOC only

2600      098° →      1700      STENO I-MRY [1.7]

GS 3.00°      TCH 45

3.7 NM      2.5 NM      1.7 NM      0.5 NM

ELEV 257	TDZE 198
----------	----------



CATEGORY	A	B	C	D
S-ILS 10R#	398/24		200 (200-½)	
S-ILS 10R	583/35		385 (400-⅝)	
S-LOC 10R	920/24 722 (700-½)		920-1⅝ 722 (700-1⅝)	
<b>C</b> CIRCLING	920-1 663 (700-1)		1280-3 1023 (1100-3)      NA	

MIRL Rwy 10L-28R  
 HIRL Rwy 10R-28L  
 REIL Rwy 28L  
 REIL Rwy 10L and 28R

SW-2, 08 OCT 2020 to 05 NOV 2020

SW-2, 08 OCT 2020 to 05 NOV 2020