

APP CRS	Rwy Idg	<b>5008</b>
<b>062°</b>	TDZE	<b>21</b>
	Apt Elev	<b>36</b>

# RNAV (GPS) RWY 6

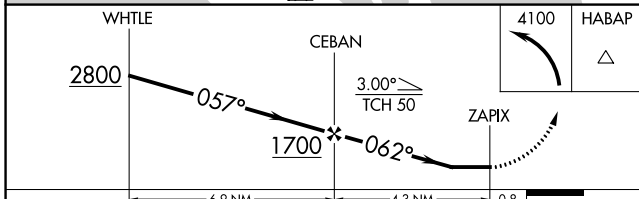
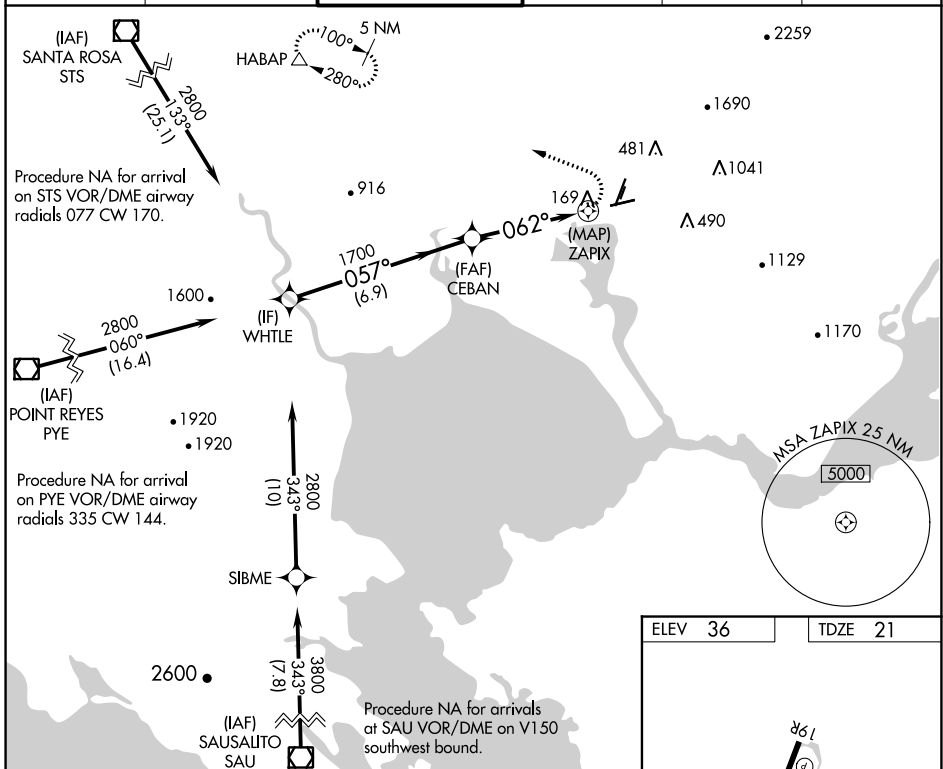
NAPA COUNTY (APC)

RNP APCH.

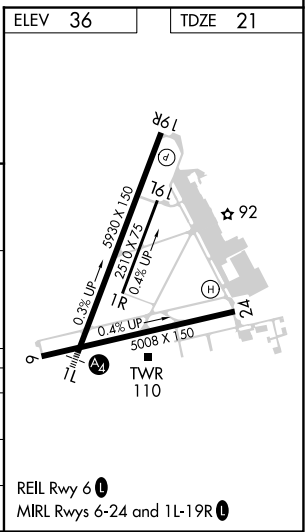
**▼** Rwy 6 helicopter visibility reduction below 1 SM NA.  
**▲** Circling Cats A/B/C NA northeast of Rwys 19R and 24.  
 Circling Cat D NA east of Rwy 19L-1R.  
 Straight-in Rwy 6 NA at night, Circling Rwy 6 NA at night.

MISSED APPROACH: Climbing left turn to 4100 direct HABAP and hold, continue climb-in-hold to 4100.  
 \*Missed approach requires minimum climb of 355 feet per NM to 2300.

ATIS <b>124.05</b>	OAKLAND CENTER <b>127.8 353.5</b>	NAPA TOWER* <b>118.7 (CTAF) 257.8</b>	GND CON <b>121.7</b>	CLNC DEL <b>127.85</b>	UNICOM <b>122.95</b>
-----------------------	--------------------------------------	--	-------------------------	---------------------------	-------------------------



	6.9 NM		4.3 NM		0.8
CATEGORY	A	B	C	D	
LNAV MDA*	480-1	459 (500-1)	480-1 $\frac{3}{8}$	459 (500-1 $\frac{3}{8}$ )	
LNAV MDA	940-1 $\frac{1}{4}$	919 (1000-1 $\frac{1}{4}$ )	940-2 $\frac{1}{2}$	919 (1000-2 $\frac{1}{2}$ )	
<b>C</b> CIRCLING	940-1 $\frac{1}{4}$	904 (1000-1 $\frac{1}{4}$ )	1280-3 1244 (1300-3)	1300-3 1264 (1300-3)	



SW-2, 08 OCT 2020 to 05 NOV 2020

SW-2, 08 OCT 2020 to 05 NOV 2020