

VORTAC	SGD	APP CRS	Rwy Idg	5008
<u>112.1</u>		<u>050°</u>	TDZE	21
Chan 58			Apt Elev	36

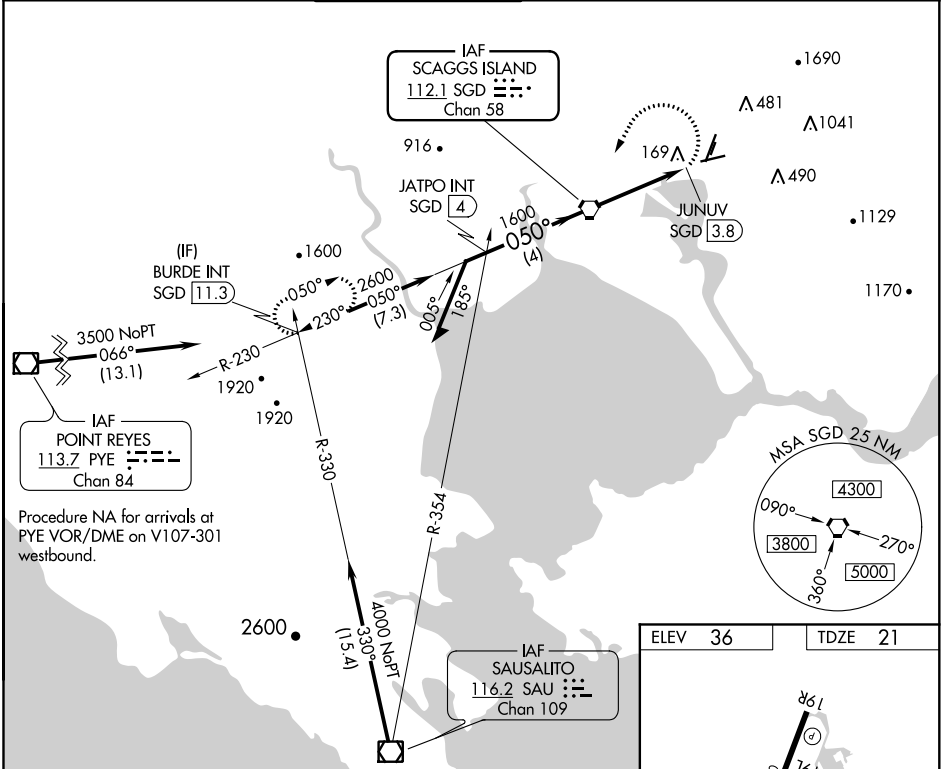
VOR RWY 6

NAPA COUNTY (APC)

▼ Rwy 6 helicopter visibility reduction below 1 SM NA. Straight-in Rwy 6 NA at night. Circling Rwy 6 NA at night. Circling Cats A/B/C NA northeast of Rwys 19R and 24. Circling Cat D NA east of Rwy 19L-1R.

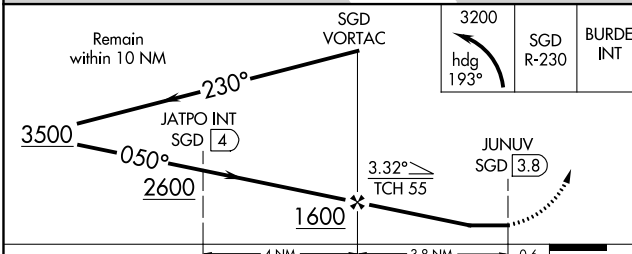
MISSED APPROACH: Climbing left turn to 3200 on heading 193° and SGD VORTAC R-230 to BURDE INT/SGD 11.3 DME and hold, continue climb-in-hold to 3200.

ATIS	OAKLAND CENTER	NAPA TOWER *	GND CON	CLNC DEL	UNICOM
124.05	127.8 353.5	118.7 (CTAF) 0 257.8	121.7	127.85	122.95



SW-2, 08 OCT 2020 to 05 NOV 2020

SW-2, 08 OCT 2020 to 05 NOV 2020



ELEV	36	TDZE	21
------	----	------	----

REIL Rwy 6 **!**
MIRL Rws 6-24 and 1L-19R **!**
FAF to MAP 3.8 NM

Knots	60	90	120	150	180
Min:Sec	3:48	2:32	1:54	1:31	1:16