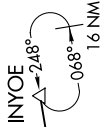
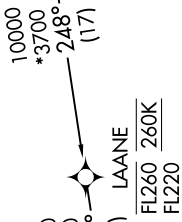
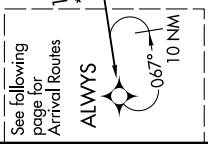


ALWAYS TWO ARRIVAL (RNAV) Transition Routes

OAKLAND CENTER
134.37 281.5
NORCAL APP CON
128.325 254.3
D-ATIS
113.7 115.8 118.85
SAN FRANCISCO TOWER
120.5 269.1
GND CON
121.8

SW-2, 08 OCT 2020 to 05 NOV 2020



NOTE: RADAR required.
NOTE: RNAV 1
NOTE: DME/DME/IRU or GPS required.
NOTE: Expect "descend via" clearance from Oakland Center.
Northern California TRACON will assign landing runway.

INYOE TRANSITION (INYOE.ALWYS2)
RUSME TRANSITION (RUSME.ALWYS2)

(CONTINUED ON FOLLOWING PAGE)

NOTE: Chart not to scale.

SW-2, 08 OCT 2020 to 05 NOV 2020