

LOC/DME I-GWQ 111.7 Chan 54	APP CRS 284°	Rwy Idg TDZE Apt Elev	28R 11236 13 13	28L 10275 13 13
---	------------------------	-----------------------------	---	---

ILS or LOC RWY 28R

SAN FRANCISCO INTL (SFO)

RNAV 1-GPS or RADAR required for procedure entry.

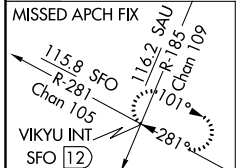
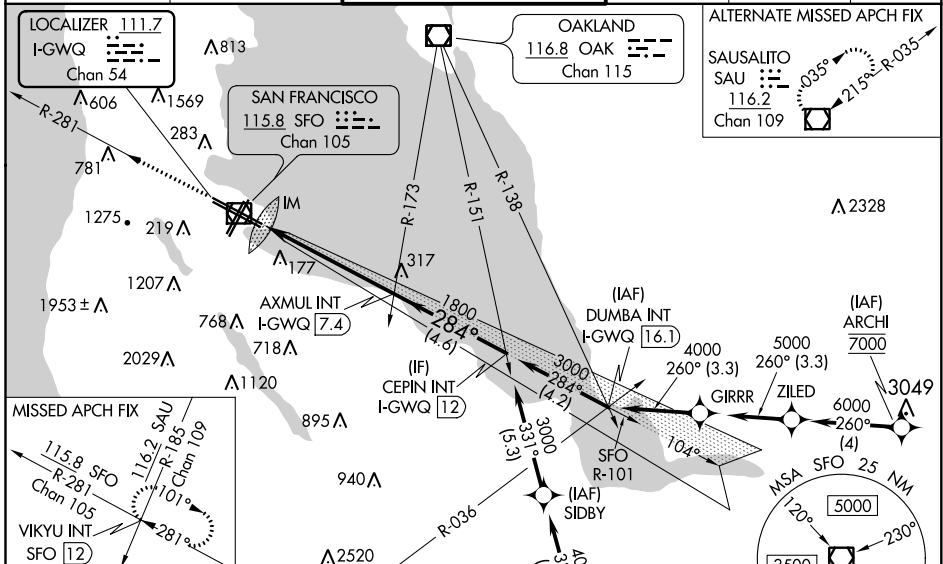
⚠ Circling NA to Rwsy 10L, 10R, 19L, and 19R. Circling Rwy 1L, 1R NA at night. For inop ALS increase S-LOC 28R# Cat C/D visibility to 1 1/2 SM. LOC procedure NA during simultaneous operations. Simultaneous approach authorized. Simultaneous operations require use of vertical guidance; maintain last assigned altitude until established on glide slope.

ALSIF-2 Rwy 28R

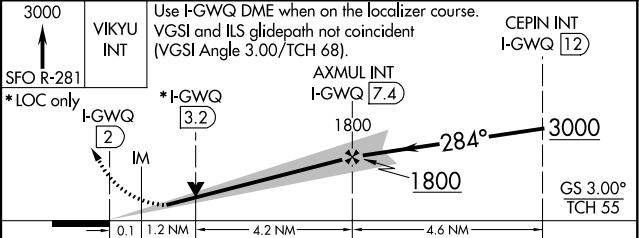
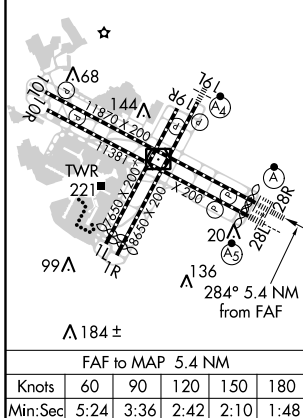
MALSR Rwy 28L

MISSED APPROACH: Climb to 3000 on SFO VOR/DME R-281 to VIKYU INT/SFO 12 DME and hold. # Missed approach requires minimum climb of 350 feet per NM to 1900; if unable to meet climb gradient, see ILS or LOC RWY 28L.

D-ATIS 113.7 115.8 118.85	NORCAL APP CON 134.5 338.2	SAN FRANCISCO TOWER 120.5 269.1	GND CON 121.8	CLNC DEL 118.2	CPDLC
---	--------------------------------------	---	-------------------------	--------------------------	-------



ELEV 13	D	TDZE 28R 13	TDZE 28L 13
HIRL all Rwsy			
TDZ/CL Rwsy 19L and 28R			
REIL Rwsy 1L, 1R and 10L			



CATEGORY	A	B	C	D
S-ILS 28R#	213/18 200 (200-1/2)			
S-LOC 28R#	480/24	467 (500-1/2)	480/50	467 (500-1)
SIDESTEP # 28L	480/55 467 (500-1)			480-1 1/2 467 (500-1 1/2)
C CIRCLING	740-1	960-1 1/4	1560-3	NA
	727 (800-1)	947 (1000-1 1/4)	1547 (1600-3)	

SW-2, 08 OCT 2020 to 05 NOV 2020

SW-2, 08 OCT 2020 to 05 NOV 2020