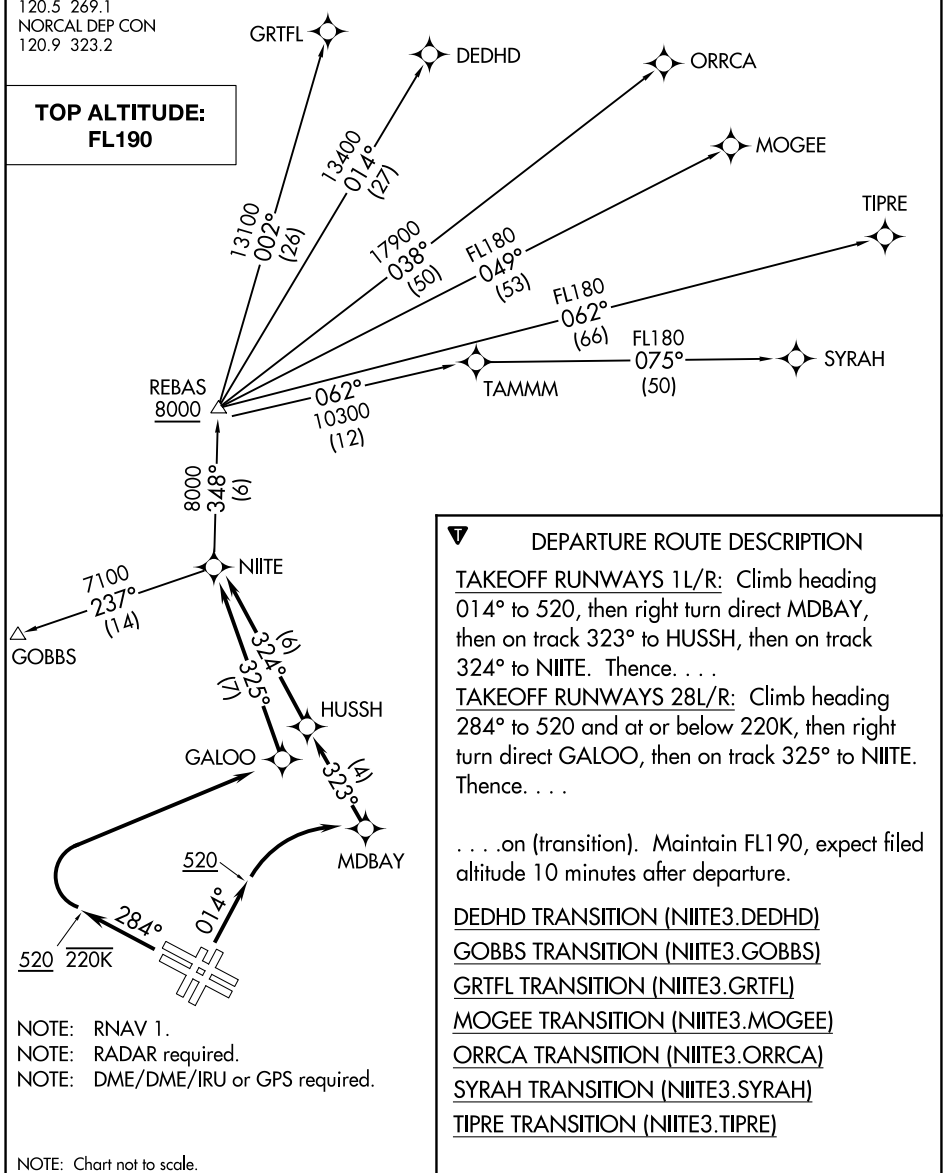


D-ATIS
113.7 115.8 118.85
CLNC DEL
118.2
CPDLC
GND CON
121.8
SAN FRANCISCO TOWER
120.5 269.1
NORCAL DEP CON
120.9 323.2

TAKEOFF MINIMUMS

Rwys 1L/R: Standard with a minimum climb of 500' per NM to 520.
Rwy 28L: Standard with minimum climb of 535' per NM to 2100.
Rwy 28R: Standard with minimum climb of 560' per NM to 2100.

**TOP ALTITUDE:
FL190**



NOTE: RNAV 1.
NOTE: RADAR required.
NOTE: DME/DME/IRU or GPS required.

NOTE: Chart not to scale.

SW-2, 08 OCT 2020 to 05 NOV 2020

SW-2, 08 OCT 2020 to 05 NOV 2020