

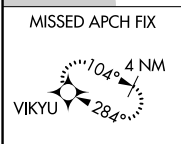
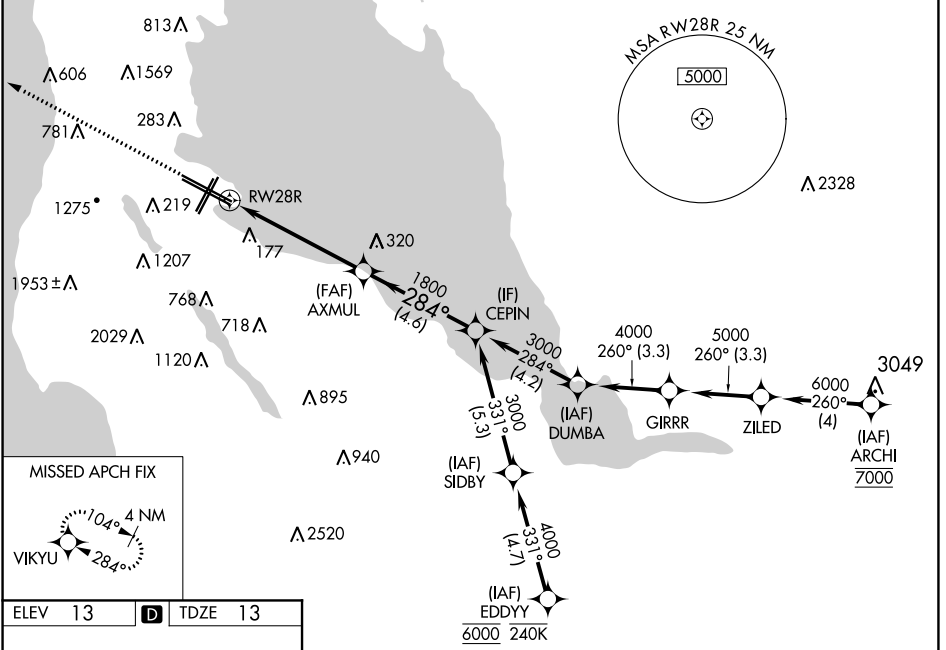
WAAS CH 48803 W28A	APP CRS 284°	Rwy Idg 11236 TDZE 13 Apt Elev 13
----------------------------------------	------------------------	--------------------------------------------------------------

RNAV (GPS) Z RWY 28R

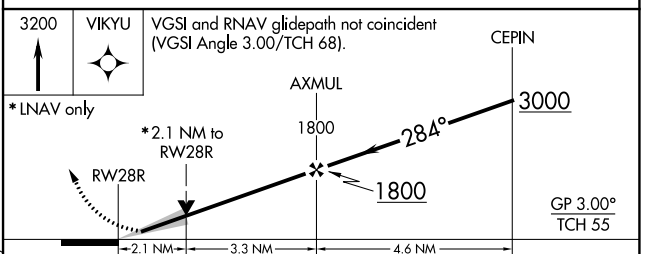
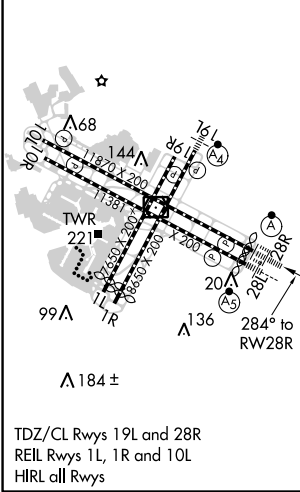
SAN FRANCISCO INTL (SFO)

RNP APCH.		SAN FRANCISCO TOWER		GND CON	CLNC DEL	CPDLC
<p>▼ Circling NA to Rwys 10L, 10R, 19L, and 19R. Circling Rwy 1L, 1R NA at night. For uncompensated Baro-VNAV systems, LNAV/VNAV NA below 3°C or above 54°C. For inop ALS, increase LNAV/VNAV all Cats visibility to 1½ SM, increase LNAV Cat C/D visibility to 2 SM.</p>		<p>113.7 115.8 118.85</p>		<p>121.8</p>	<p>118.2</p>	
D-ATIS		NORCAL APP CON				
		<p>134.5 338.2</p>				
		<p>120.5 269.1</p>				

ALSF-2
 MISSED APPROACH: Climb to 3200 direct VIKYU and hold, continue climb-in-hold to 3200.



ELEV 13	D	TDZE 13
---------	----------	---------



CATEGORY	A	B	C	D
LPV DA		213/18	200 (200-½)	
LNAV/VNAV DA		642-1⅓	629 (700-1⅓)	
LNAV MDA	760/24 747 (800-½)	760/40 747 (800-¾)	760-1¾	747 (800-1¾)
C CIRCLING	760-1 747 (800-1)	960-1¼ 947 (1000-1¼)	1560-3 1547 (1600-3)	NA

SW-2, 08 OCT 2020 to 05 NOV 2020

SW-2, 08 OCT 2020 to 05 NOV 2020