

(SAHEY3.SAHEY) 17341

# SAHEY THREE DEPARTURE (RNAV)

AL-375 (FAA)

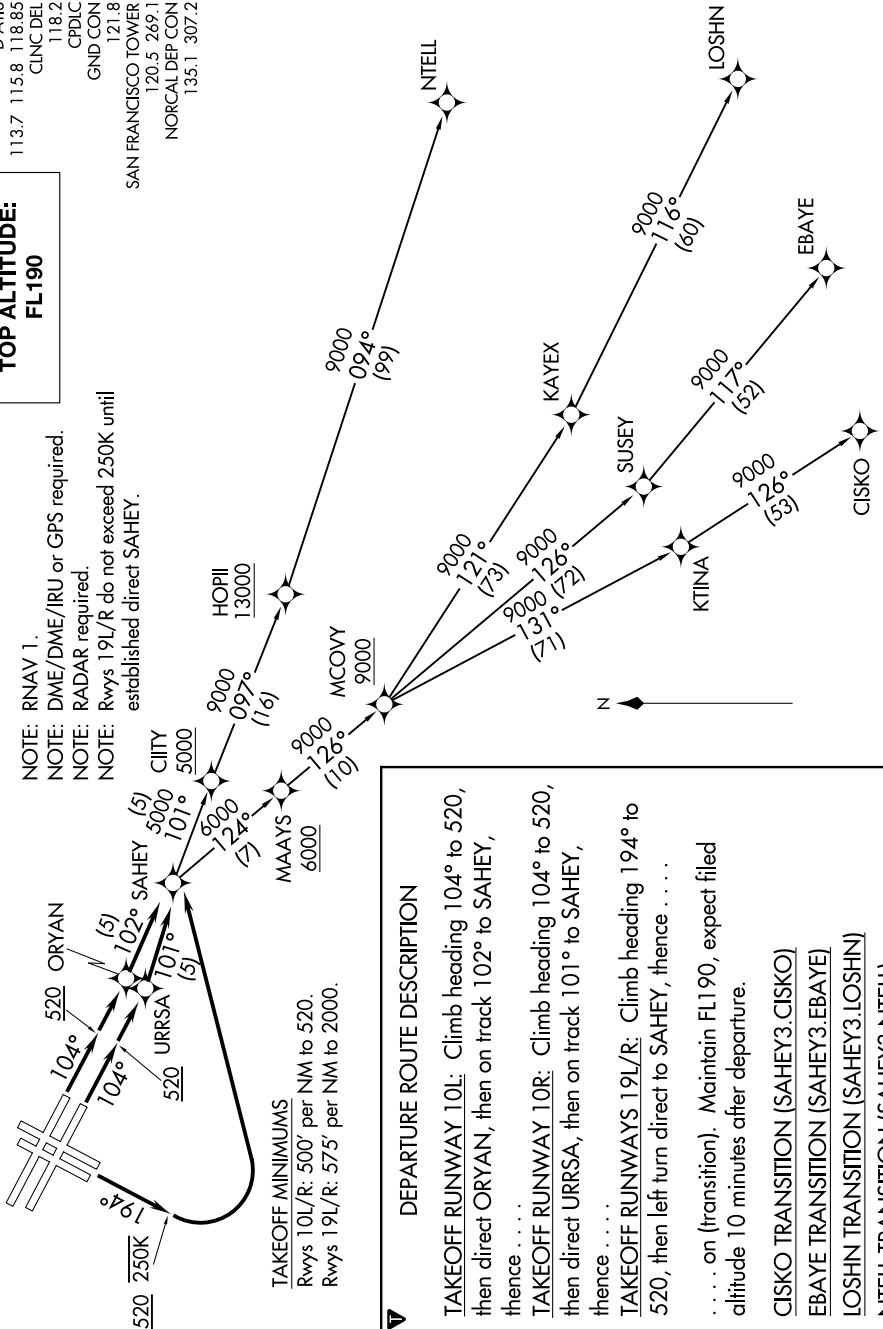
SAN FRANCISCO INTL (SFO)  
SAN FRANCISCO, CALIFORNIA

0200 \ 00 \ 00Z \ 2020 \ 1 \ 05 \ NOV \ 2020 \ 'Z \ MS

**TOP ALTITUDE:**  
**FL190**

D-ATIS 113.7 115.8 118.85  
CLNC DEL 118.2  
CPDLC  
GND CON 121.8  
SAN FRANCISCO TOWER 120.5 269.1  
NORCAL DEP CON 135.1 307.2

NOTE: RNAV 1.  
NOTE: DME/DME/IRU or GPS required.  
NOTE: RADAR required.  
NOTE: Rwy 19L/R do not exceed 250K until established direct SAHEY.



### DEPARTURE ROUTE DESCRIPTION

**TAKEOFF RUNWAY 10L:** Climb heading 104° to 520, then direct ORYAN, then on track 102° to SAHEY, thence . . . .

**TAKEOFF RUNWAY 10R:** Climb heading 104° to 520, then direct URRSA, then on track 101° to SAHEY, thence . . . .

**TAKEOFF RUNWAYS 19L/R:** Climb heading 194° to 520, then left turn direct to SAHEY, thence . . . .

. . . . on (transition). Maintain FL190, expect filed altitude 10 minutes after departure.

- CISCO TRANSITION (SAHEY3.CISCO)
- EBAYE TRANSITION (SAHEY3.EBAYE)
- LOSHN TRANSITION (SAHEY3.LOSHN)
- NITELL TRANSITION (SAHEY3.NITELL)

NOTE: Chart not to scale.

SAHEY THREE DEPARTURE (RNAV)  
(SAHEY3.SAHEY) 20AUG15

SAN FRANCISCO, CALIFORNIA  
SAN FRANCISCO INTL (SFO)

SW-2, 08 OCT 2020 to 05 NOV 2020