

COASTAL SEVEN DEPARTURE

ATIS
 127.1 263.15
 GND CON
 121.7 289.4
 WESTFIELD TOWER ★
 118.9 (CTAF) 251.1
 YANKEE DEP CON
 125.35 281.5

**TOP ALTITUDE:
 3000**

TAKEOFF MINIMUMS:

Rwy 20: Standard.

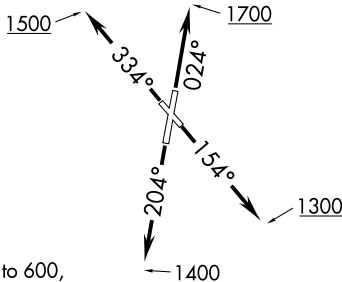
Rwy 2: 200-1½ or standard with minimum climb of 210' per NM to 600, or alternatively, with standard takeoff minimums and a normal 200' per NM climb gradient, takeoff must occur no later than 1200' prior to DER.

Rwy 15: 400-1⅞ or standard with minimum climb of 460' per NM to 800.

Rwy 33: Standard with minimum climb of 340' per NM to 1800.

NOTE: RADAR required.

NOTE: Initial departure headings are predicated on avoiding noise sensitive areas. Flight crew awareness and compliance is important in minimizing noise impacts on surrounding communities.



HARTFORD
 114.9 HFD
 Chan 96
 N41°38.47'-W72°32.85'

THUMB
 N41°31.40'
 W72°21.53'

YODER
 N41°17.38'
 W72°20.55'

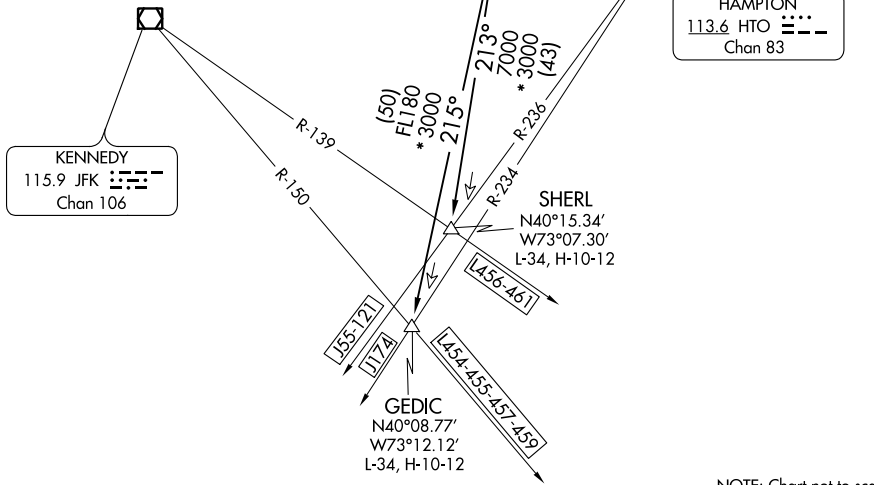
CALVERTON
 117.2 CCC
 Chan 119
 N40°55.78'-W72°47.93'

HAMPTON
 113.6 HTO
 Chan 83

KENNEDY
 115.9 JFK
 Chan 106

SHERL
 N40°15.34'
 W73°07.30'
 L-34, H-10-12

GEDIC
 N40°08.77'
 W73°12.12'
 L-34, H-10-12



(NARRATIVE ON FOLLOWING PAGE)

NOTE: Chart not to scale.

NE-1, 08 OCT 2020 to 05 NOV 2020

NE-1, 08 OCT 2020 to 05 NOV 2020

COASTAL SEVEN DEPARTURE