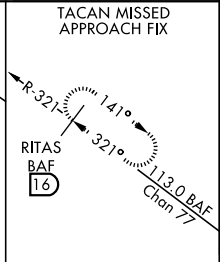
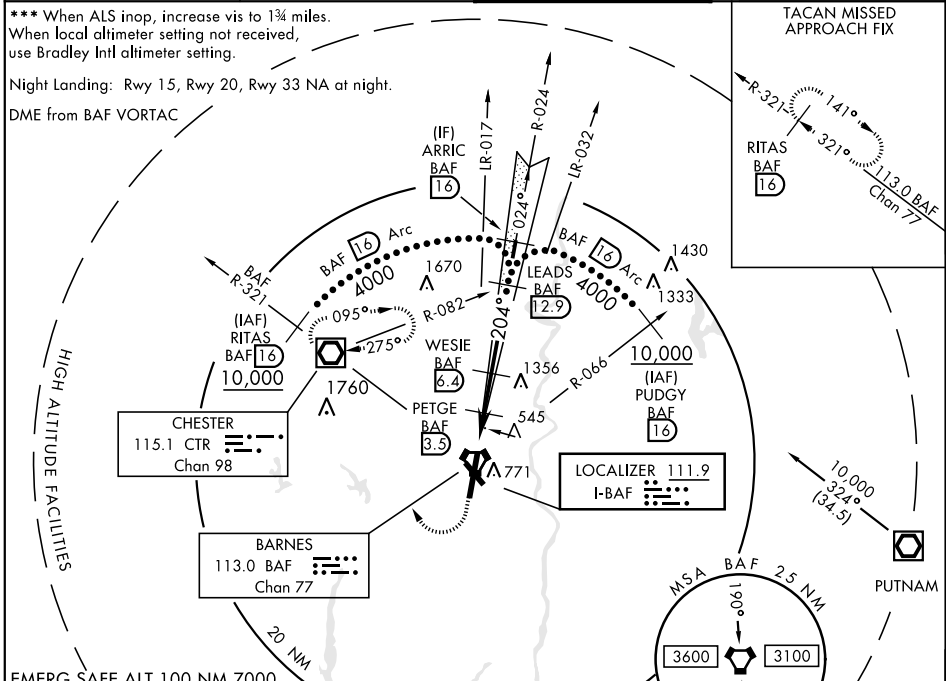


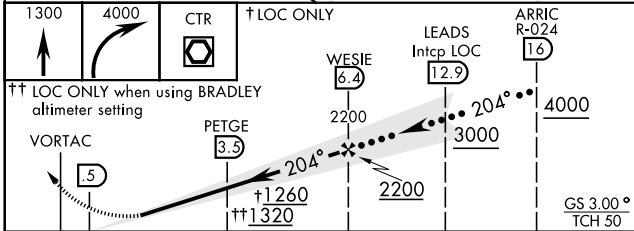
# HI-ILS or LOC RWY 20

LOC I-BAF <b>111.9</b>	APCH CRS <b>204°</b>	Rwy ldg TDZE Arprt Elev <b>9000</b> <b>270</b> <b>270</b>	JAL-446 [USAF]	WESTFIELD-BARNES REGIONAL (KBAF)
*When ALS inop, increase CAT E vis to 1½ miles. **When ALS inop, increase CAT CD vis to 1½ miles, CAT E vis to 3 miles.		MALS R 	MISSED APPROACH: Climb to 1300, then climbing right turn to 4000 direct CTR VOR/DME and hold, continue climb in hold to 4000. (TACAN acct climb to 1300, then climbing right turn to 4000 via hdg 010° and BAF VORTAC R-321 to RITAS and hold.)	

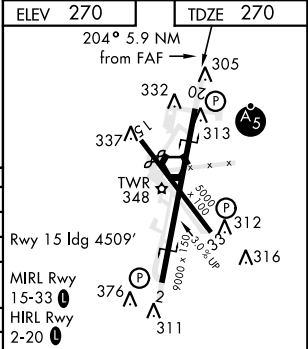
ATIS <b>127.1 263.15</b>	BRADLEY APP CON <b>125.35 281.5</b>	WESTFIELD TOWER ★ <b>118.9 (CTAF) 0 251.1</b>	GND CON <b>121.7 289.4</b>
-----------------------------	--	--	-------------------------------



EMERG SAFE ALT 100 NM 7000



ELEV 270	TDZE 270
----------	----------



CATEGORY	C	D	E
S-ILS 20*	520/50 250 (300-1)		
S-LOC 20**	800/55 530 (600-1¼)		
CIRCLING	1160-2¾ 890 (900-2¾)		1660-3 1390 (1400-3)
BRADLEY INTL ALTIMETER			
S-ILS 20*	564/50 294 (300-1)		
S-LOC 20***	860-1¼ 590 (600-1¼)		
CIRCLING	1200-2¾ 930 (1000-2¾)	1200-3 930 (1000-3)	1680-3 1410 (1500-3)

FAF to MAP 5.9 NM					
Knots	120	140	160	180	200
Min:Sec	2:57	2:32	2:13	1:58	1:46

# HI-ILS or LOC RWY 20

NE-1, 08 OCT 2020 to 05 NOV 2020

NE-1, 08 OCT 2020 to 05 NOV 2020