

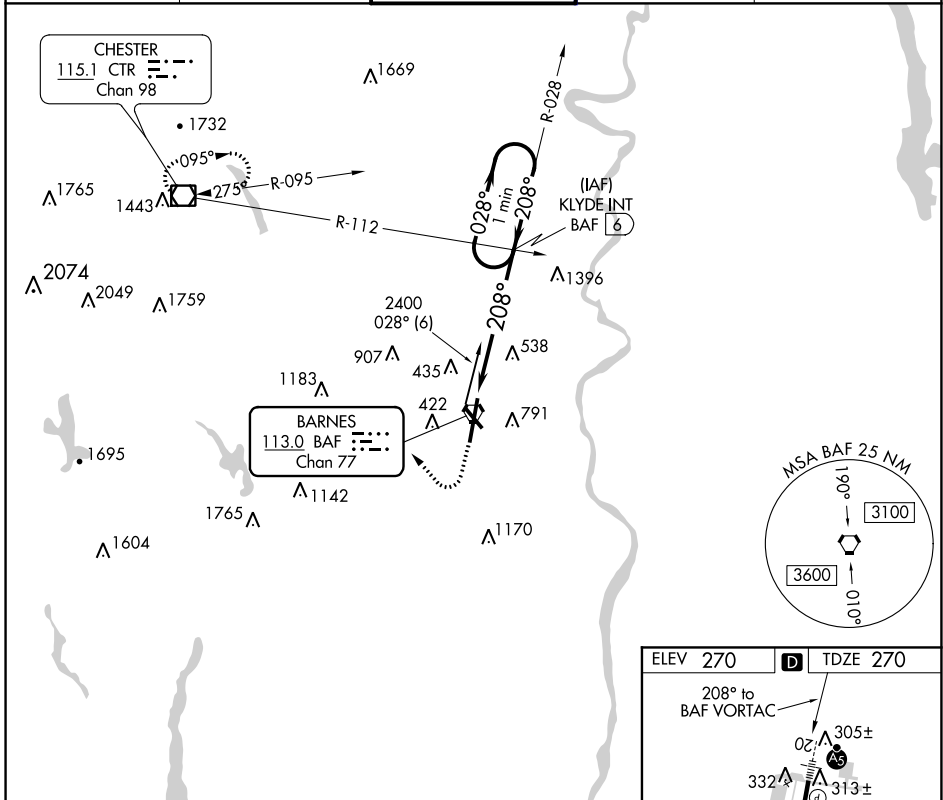
BAF VORTAC 113.0 Chan 77	APP CRS 208°	Rwy Idg 8919 TDZE 270 Apt Elev 270
---------------------------------------	------------------------	---

VOR RWY 20

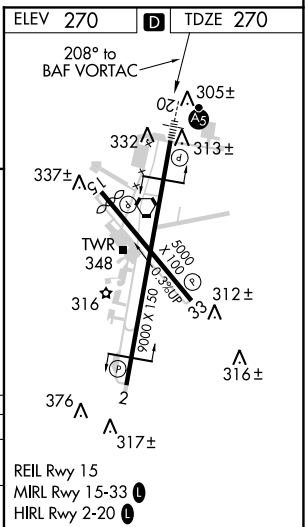
WESTFIELD-BARNES RGNL (BAF)

-21°C	For inoperative MALSR, increase Cat A/B visibility to RVR 5000. Night landing: Rwy 15 NA.	MALSR 	MISSED APPROACH: Climb to 1200, then climbing right turn to 4000 direct CTR VOR/DME and hold, continue climb in hold to 4000.

ATIS 127.1 263.15	YANKEE APP CON 125.35 281.5	WESTFIELD TOWER* 118.9 (CTAF) 0 251.1	GND CON 121.7 289.4	CLNC DEL 121.7 (when tower closed)
-----------------------------	---------------------------------------	---	-------------------------------	---



1200 4000 CTR	KLYDE INT BAF 6 One Minute Holding Pattern			
	208° to BAF VORTAC 208° to 2400 208° to 2100 3.04° TCH 43 VGSI and descent angles not coincident (VGSI Angle 3.00/TCH 50).			
CATEGORY	A	B	C	D
S-20	940/40	670 (700-1¼)	940/60 670 (700-1¼)	940-1½ 670 (700-1½)
CIRCLING	1160-1¼	890 (900-1¼)	1160-2¾ 890 (900-2¾)	1660-3 1390 (1400-3)



NE-1, 08 OCT 2020 to 05 NOV 2020

NE-1, 08 OCT 2020 to 05 NOV 2020