

BAF VORTAC <b>113.0</b> Chan 77	APP CRS <b>025°</b>	Rwy Idg <b>9000</b> TDZE <b>264</b> Apt Elev <b>270</b>
---------------------------------------	------------------------	---

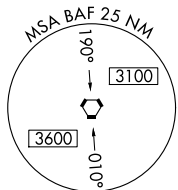
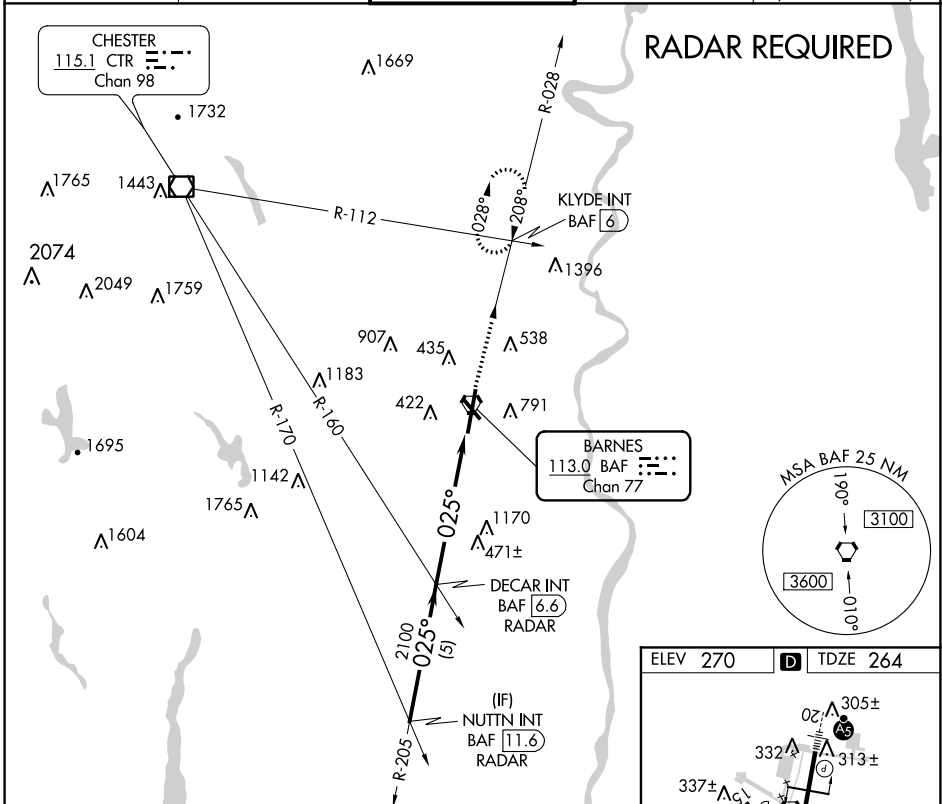
# VOR or TACAN RWY 2

WESTFIELD-BARNES RGNL (BAF)

**⚠** Night landing: Rwy 15 NA.  
**❄** Helicopter visibility reduction below 3/4 SM NA.

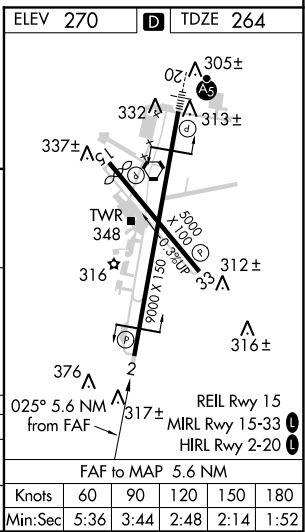
MISSED APPROACH: Climb to 3000 via the BAF VORTAC R-028 to KLYDE INT and hold.

ATIS <b>127.1 263.15</b>	YANKEE APP CON <b>125.35 281.5</b>	WESTFIELD TOWER* <b>118.9 (CTAF) 0 251.1</b>	GND CON <b>121.7 289.4</b>	CLNC DEL <b>121.7</b> (when tower closed)
-----------------------------	---------------------------------------	---	-------------------------------	---



VGSI and descent angles not coincident (VGSI Angle 3.00/TCH 50).

NUTTN INT BAF 11.6 RADAR 3000 025° 2100 3.02° TCH 43 5.6 NM KLYDE INT BAF R-028 BAF 1 BAF VORTAC	3000		3000		KLYDE INT BAF R-028 BAF 1 BAF VORTAC
	5 NM		5.6 NM		
CATEGORY	A	B	C	D	E
S-2	780-1	516 (600-1)	780-1½ 516 (600-1½)	780-1¾	516 (600-1¾)
CIRCLING	1160-1¼	890 (900-1¼)	1160-2¾ 890 (900-2¾)	1660-3	1390 (1400-3)



NE-1, 08 OCT 2020 to 05 NOV 2020

NE-1, 08 OCT 2020 to 05 NOV 2020