

WICHITA, KANSAS

# RNAV (GPS) RWY 19L

APCH CRS	Rwy Idg	12,007
192°	TDZE	1365
	Arpt Elev	1372

AL-453 (USAF)

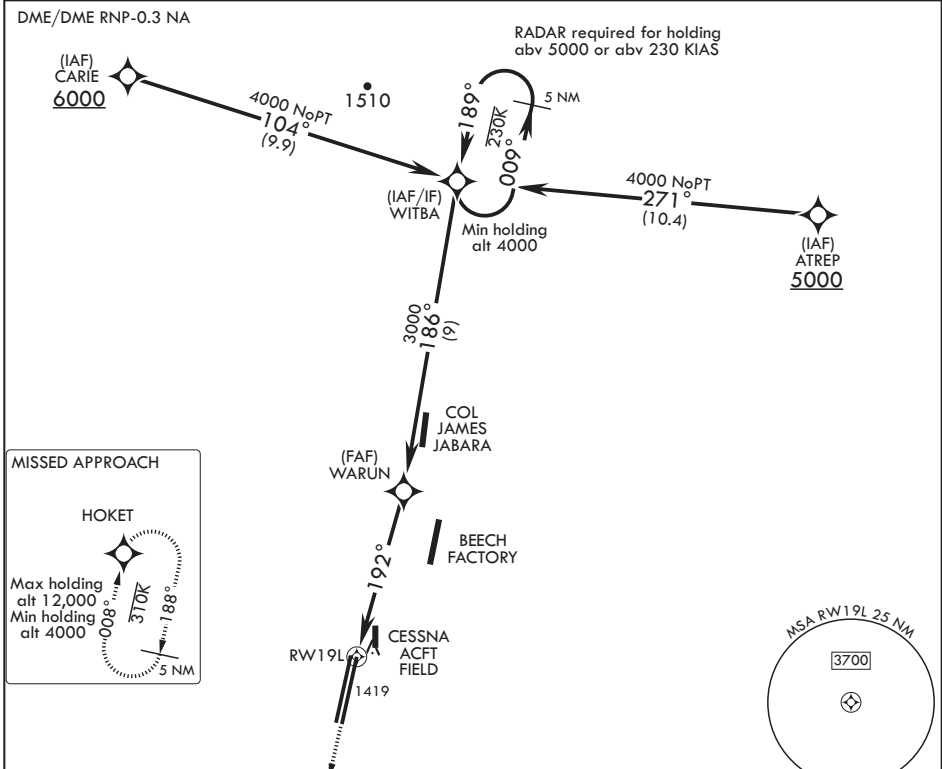
MC CONNELL AFB (KIAB)

**⚠** \* When ALS inop, increase CAT AB RVR to 55, vis to 1 mile; CAT CDE vis to 1 1/4 miles.  
 \*\* Circling NA west of Rwy 1L-19R.

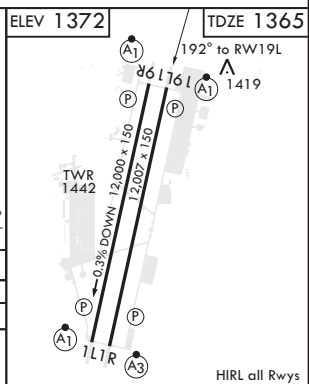
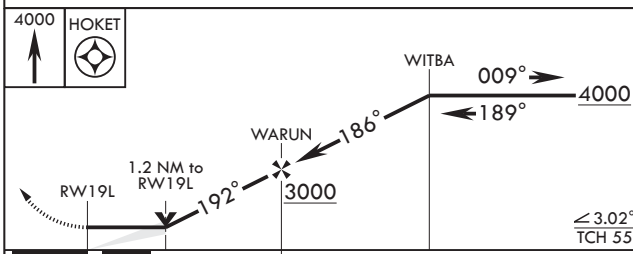


**MISSED APPROACH:** Climbing left turn to 4000 direct HOKET and hold.

D ATIS <b>124.65 269.9</b>	WICHITA APP CON <b>134.8 269.1</b>	TOWER <b>127.25 291.775</b>	GND CON <b>118.0 275.8</b>
-------------------------------	---------------------------------------	--------------------------------	-------------------------------



EMERG SAFE ALT 100 NM 4100



CATEGORY	A	B	C	D	E
LNAV MDA*	1800/40		435	(500-3/4)	
<b>C</b> CIRCLING**	1900-1 528 (600-1)		1900-1 1/2 528 (600-1 1/2)	2400-3 1028 (1100-3)	

WICHITA, KANSAS  
Amdt 5 10SEP20

37°37'N - 97°16'W

MC CONNELL AFB (KIAB)

# RNAV (GPS) RWY 19L

NC-2, 08 OCT 2020 to 05 NOV 2020

NC-2, 08 OCT 2020 to 05 NOV 2020