

WICHITA, KANSAS

TACAN RWY 1L

TACAN IAB Chan 112	APCH CRS 012°	Rwy Idg TDZE Arprt Elev	12,000 1347 1372
-----------------------	------------------	-------------------------------	------------------------

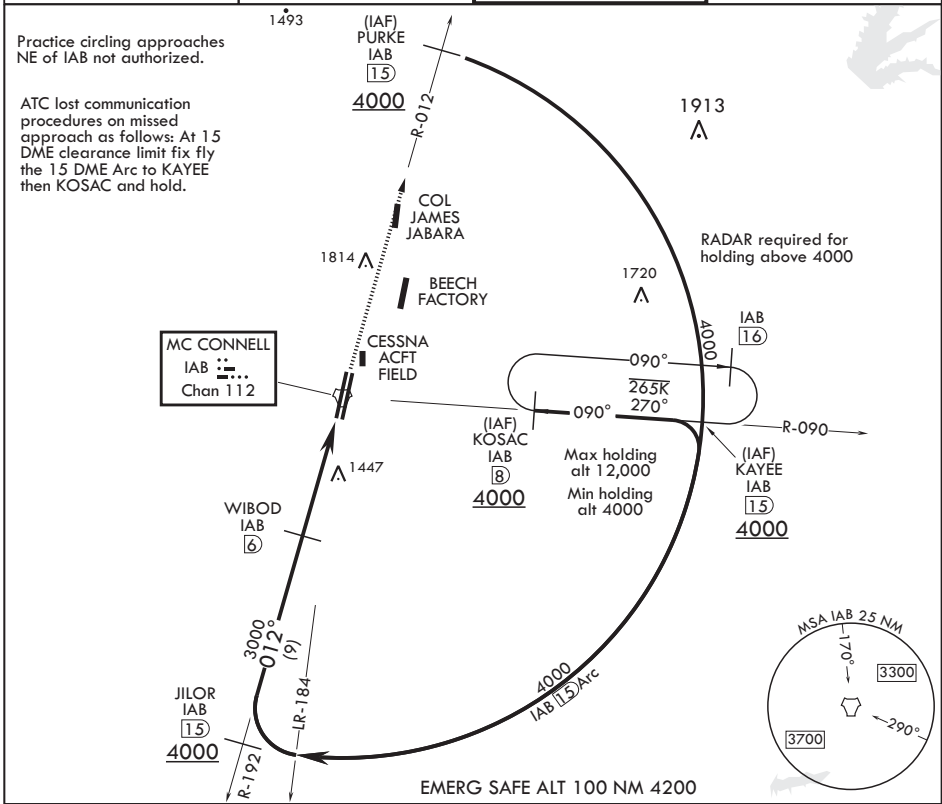
AL-453 (USAF)

MC CONNELL AFB (KIAB)

V * When ALS inop, increase CAT AB RVR to 55 and vis to 1 mile, CAT CDE RVR to 60 and vis to 1 1/4 miles.
 ** Circling not authorized W of Rwy 1L-19R.

ALSF-1
 MISSED APPROACH: Climb to 4000 via IAB TACAN R-012 to 15 DME (PURKE). Expect further clearance from ATC.

D ATIS 124.65 269.9	WICHITA APP CON 134.8 269.1	TOWER 127.25 291.775	GND CON 118.0 275.8
------------------------	--------------------------------	-------------------------	------------------------



NC-2, 08 OCT 2020 to 05 NOV 2020

NC-2, 08 OCT 2020 to 05 NOV 2020

WIBOD IAB 6	3000	012°	4.4 NM	0.7	4000 PURKE IAB 15	ELEV 1372	TDZE 1347
<p>2.97° ≥ TCH 59</p>		<p>COGMU IAB 1.6</p>		<p>TACAN</p>			
CATEGORY	A	B	C	D	E		
S-1L*	1760/24 413 (400-1/2)		1760/40 413 (400-3/4)				
C CIRCLING**	1900-1 528 (600-1)		1900-1 1/2 528 (600-1/2)	2400-3 1028 (1100-3)			

WICHITA, KANSAS
 Amdt 5 10SEP20

37°37'N - 97°16'W

MC CONNELL AFB (KIAB) TACAN RWY 1L