

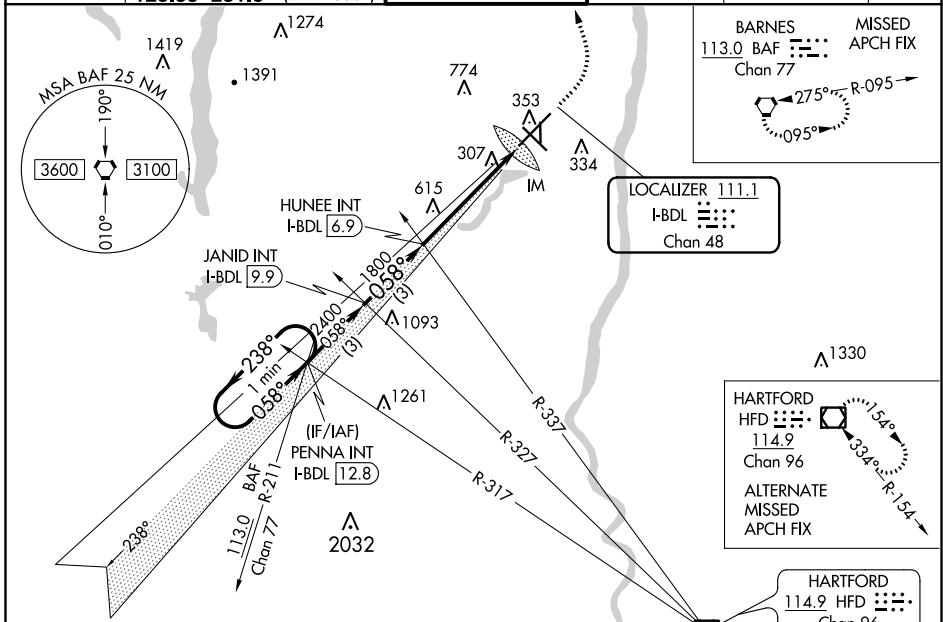
LOC/DME I-BDL <b>111.1</b> Chan <b>48</b>	APP CRS <b>058°</b>	Rwy Idg TDZE <b>173</b> Apt Elev <b>173</b>	<b>9509</b>
---	------------------------	---	-------------

# ILS RWY 6 (CAT II & III)

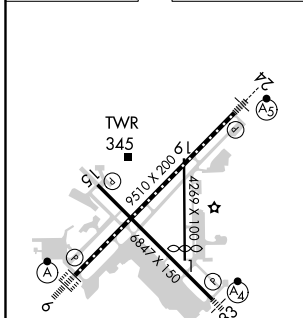
BRADLEY INTL (BDL)

RADAR required for procedure entry.		ALSF-2	MISSED APPROACH: Climb to 4000 then left turn direct BAF VORTAC and hold.	
CAT II: RVR 1000 authorized with specific OPSPEC, MSPEC or LOA approval and use of autoland or HUD to touchdown.				

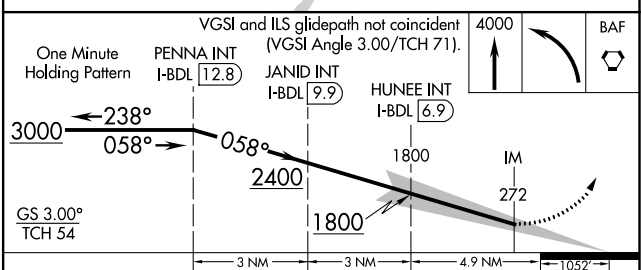
D-ATIS <b>118.15</b>	YANKEE APP CON <b>123.95 290.55</b> (061°-240°) <b>125.35 281.5</b> (241°-060°)	BRADLEY TOWER <b>120.3 351.8</b>	GND CON <b>121.9 348.6</b>	CLNC DEL <b>121.75 322.3</b>	CPDLC
-------------------------	---	-------------------------------------	-------------------------------	---------------------------------	-------



ELEV 173	<b>D</b>	TDZE 173
----------	----------	----------



TDZ/CL Rwy 6 and 24	HIRL Rwys 6-24 and 15-33	MIRL Rwy 1-19	REIL Rwys 6 and 15
---------------------	--------------------------	---------------	--------------------



CATEGORY	A	B	C	D
S-ILS 6	CAT II RA 101/12 100 DA 273			
S-ILS 6	CAT III RVR 06			

**CATEGORY II & III ILS-SPECIAL AIRCREW & AIRCRAFT CERTIFICATION REQUIRED**

NE-1, 08 OCT 2020 to 05 NOV 2020

NE-1, 08 OCT 2020 to 05 NOV 2020