

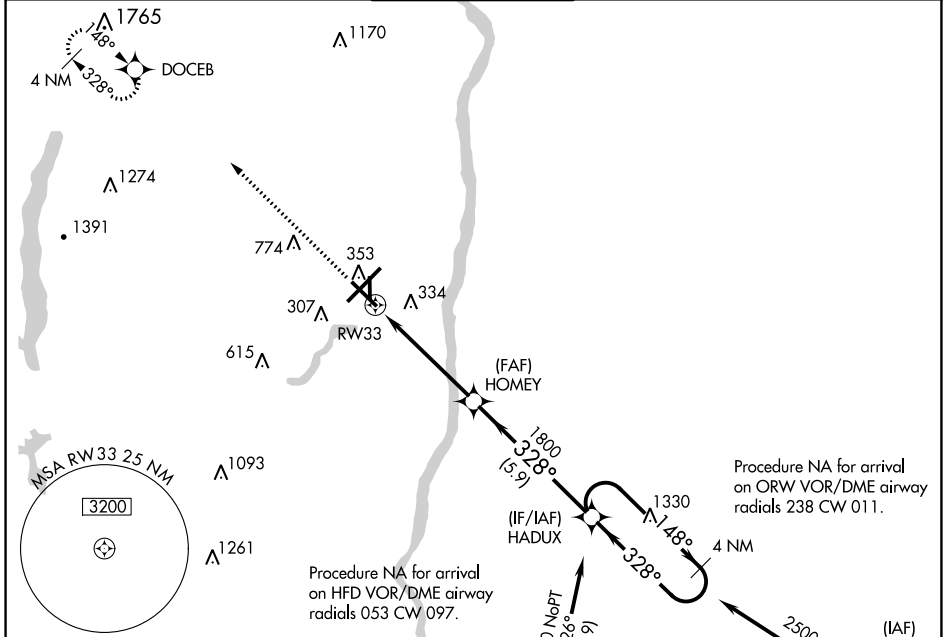
WAAS CH 65628 W33A	APP CRS 328°	Rwy Idg TDZE Apt Elev	6847 171 173
--	------------------------	-----------------------------	---

RNAV (GPS) RWY 33

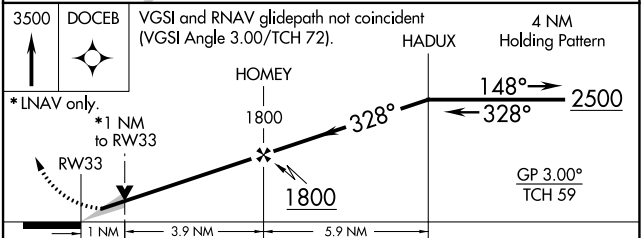
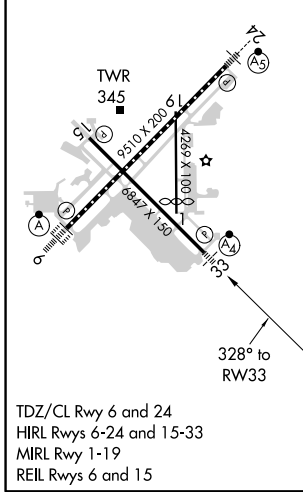
BRADLEY INTL (BDL)

<p>▼ Inop table does not apply to LPV all Cats. For uncompensated Baro-VNAV systems, LNAV/VNAV NA below -17°C (2°F) or above 54°C (130°F). Circling Rwy 19 NA at night. DME/DME RNP-0.3 NA. For inop ALS, increase LNAV/VNAV all Cats visibility to RVR 4500.</p>	<p>MALSF </p>	<p>MISSED APPROACH: Climb to 3500 direct DOCEB and hold, continue climb-in-hold to 3500.</p>
--	-------------------	--

D-ATIS 118.15	YANKEE APP CON 123.95 290.55 (061°-240°) 125.35 281.5 (241°-060°)	BRADLEY TOWER 120.3 351.8	GND CON 121.9 348.6	CLNC DEL 121.75 322.3	CPDLC
-------------------------	---	-------------------------------------	-------------------------------	---------------------------------	-------



ELEV 173	D	TDZE 171
----------	----------	----------



CATEGORY	A	B	C	D
LPV DA		371/40	200 (200-¾)	
LNAV/VNAV DA		463/40	292 (300-¾)	
LNAV MDA	560/40	389 (400-¾)	560/45	389 (400-7/8)
C CIRCLING	700-1	527 (600-1)	1120-2¾ 947 (1000-1¾)	1220-3 1047 (1100-3)

NE-1, 08 OCT 2020 to 05 NOV 2020

NE-1, 08 OCT 2020 to 05 NOV 2020