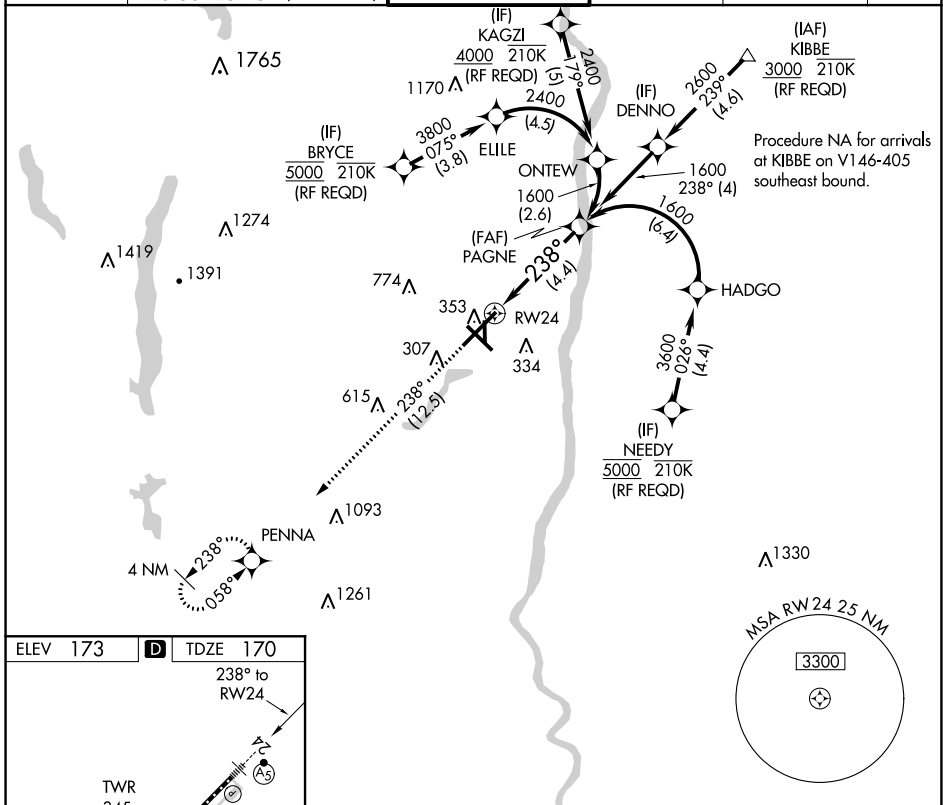


APP CRS	Rwy Idg	9509
238°	TDZE	170
	Apt Elev	173

RNAV (RNP) Z RWY 24

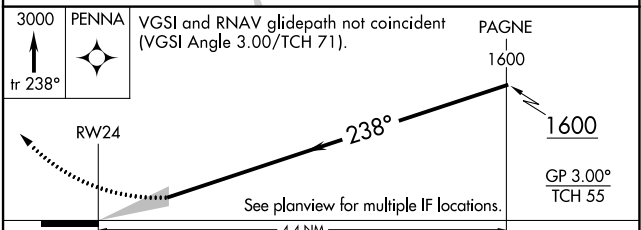
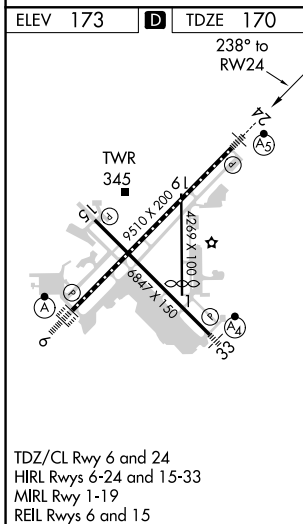
BRADLEY INTL (BDL)

<p>▽ For uncompensated Baro-VNAV systems, procedure NA below -18°C (0°F) or above 54°C (130°F). GPS required. For inop ALS, increase all Cats visibility to 1½ SM.</p>		<p>MALSR</p>	<p>MISSED APPROACH: Climb to 3000 on track 238° to PENNA and hold.</p>		
D-ATIS	YANKEE APP CON	BRADLEY TOWER	GND CON	CLNC DEL	CPDLC
118.15	123.95 290.55 (061°-240°) 125.35 281.5 (241°-060°)	120.3 351.8	121.9 348.6	121.75 322.3	



NE-1, 08 OCT 2020 to 05 NOV 2020

NE-1, 08 OCT 2020 to 05 NOV 2020



CATEGORY	A	B	C	D
RNP 0.30 DA	622/60 452 (500-1½)			

AUTHORIZATION REQUIRED