

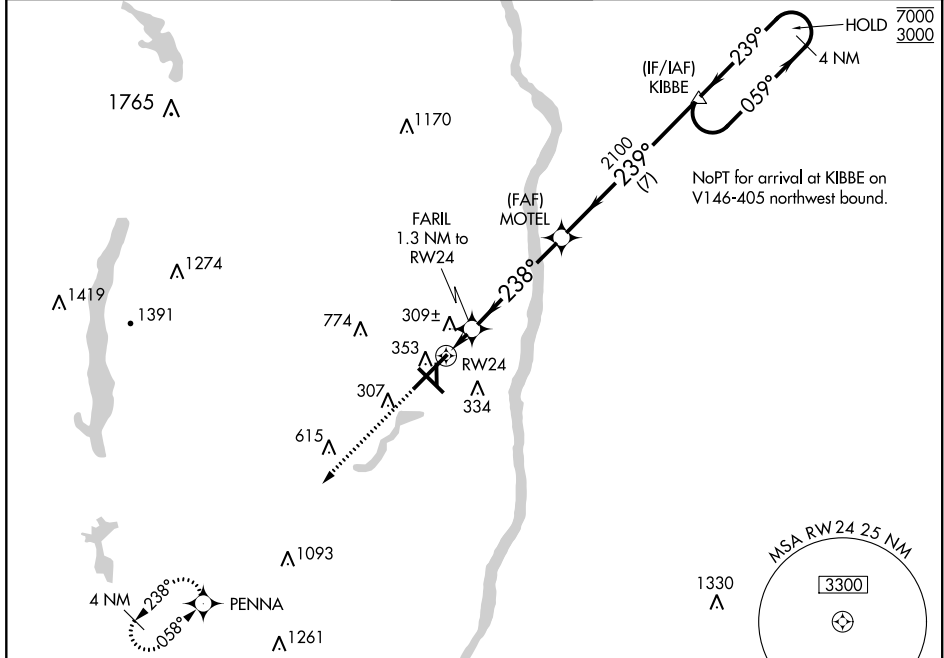
WAAS CH 97310 W24A	APP CRS 238°	Rwy Idg TDZE 170 Apt Elev 173	9509
--	------------------------	---	-------------

RNAV (GPS) Y RWY 24

BRADLEY INTL (BDL)

RNP APCH. ⚠	Circling Rwy 19 NA at night. For uncompensated BARO-VNAV systems, LNAV/VNAV NA below -18°C or above 54°C.	MALSR ⚠	MISSED APPROACH: Climb to 3000 direct PENNA and hold.
----------------	---	------------	--

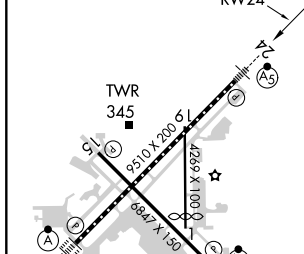
D-ATIS 118.15	YANKEE APP CON 123.95 290.55 (061°-240°) 125.35 281.5 (241°-060°)	BRADLEY TOWER 120.3 351.8	GND CON 121.9 348.6	CLNC DEL 121.75 322.3	CPDLC
-------------------------	---	-------------------------------------	-------------------------------	---------------------------------	-------



NE-1, 08 OCT 2020 to 05 NOV 2020

NE-1, 08 OCT 2020 to 05 NOV 2020

ELEV 173	D	TDZE 170
-----------------	----------	-----------------



3000	PENNA	VGSI and RNAV glidepath not coincident (VGSI Angle 3.00/TCH 71).	KIBBE	4 NM Holding Pattern
*LNAV only.	FARIL 1.3 NM to RWY 24	MOTEL	2100	059° → 7000 ← 239° 3000
RWY 24	238°	*640	2100	GP 3.00° TCH 55
1.3		4.6 NM		7 NM

CATEGORY	A	B	C	D
LPV DA	370/18		200 (200-½)	
LNAV/VNAV DA	560/45		390 (400-¾)	
LNAV MDA	560/24 390 (400-½)		560/35 390 (400-¾)	
C CIRCLING	700-1 527 (600-1)		1120-2¾ 947 (1000-2¾) 1220-3 1047 (1100-3)	

TDZ/CL Rwy 6 and 24
HIRL Rws 6-24 and 15-33
MIRL Rwy 1-19
REIL Rws 6 and 15