

WAAS CH <b>70328</b> <b>W06A</b>	APP CRS <b>058°</b>	Rwy Idg TDZE Apt Elev	<b>9509</b> <b>173</b> <b>173</b>
--	------------------------	-----------------------------	---

# RNAV (GPS) Y RWY 6

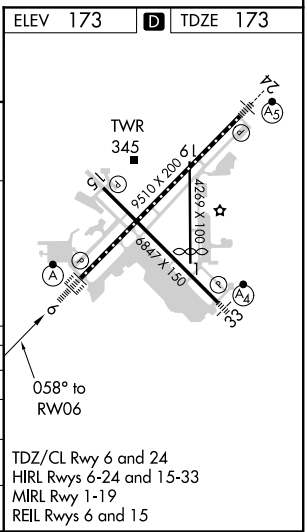
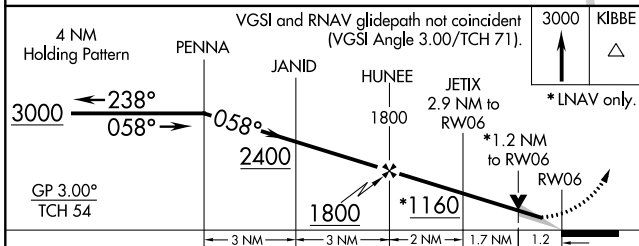
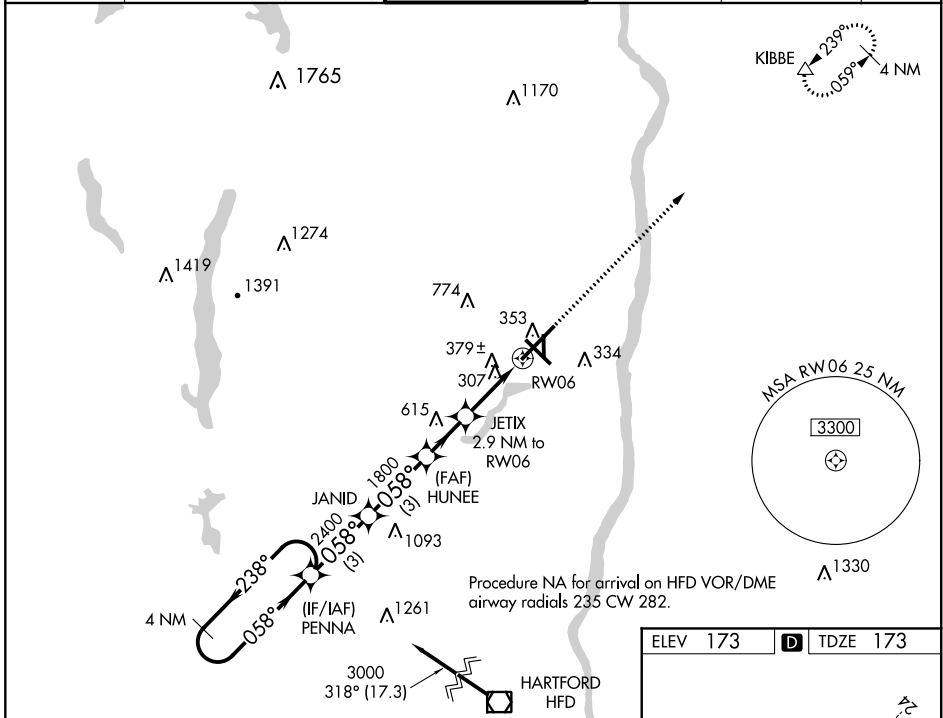
BRADLEY INTL (BDL)

**⚠** For uncompensated Baro-VNAV systems, LNAV/VNAV NA below -18°C (0°F) or above 54°C (130°F). Circling Rwy 19 NA at night.  
DME/DME RNP-0.3 NA. For inop ALS, increase LNAV/VNAV all Cats visibility to 1½ SM and LNAV Cat C/D visibility to 1¾ SM.

**ALS-2**

**MISSED APPROACH:**  
Climb to 3000 direct KIBBE and hold.

D-ATIS <b>118.15</b>	YANKEE APP CON <b>123.95 290.55</b> (061°-240°) <b>125.35 281.5</b> (241°-060°)	BRADLEY TOWER <b>120.3 351.8</b>	GND CON <b>121.9 348.6</b>	CLNC DEL <b>121.75 322.3</b>	CPDLC
-------------------------	---	-------------------------------------	-------------------------------	---------------------------------	-------



CATEGORY	A	B	C	D
LPV DA	373/18 200 (300-½)			
LNAV/VNAV DA	640/60 467 (500-1½)			
LNAV MDA	640/24	467 (500-½)	640/50	467 (500-1)
<b>C</b> CIRCLING	700-1	527 (600-1)	1120-2¾ 947 (1000-2¾)	1220-3 1047 (1100-3)

NE-1, 08 OCT 2020 to 05 NOV 2020

NE-1, 08 OCT 2020 to 05 NOV 2020