

WAAS CH 50300 W12A	APP CRS 122°	Rwy Idg TDZE Apt Elev	6001 74 79
--	------------------------	-----------------------------	---------------------------------------

RNAV (GPS) RWY 12

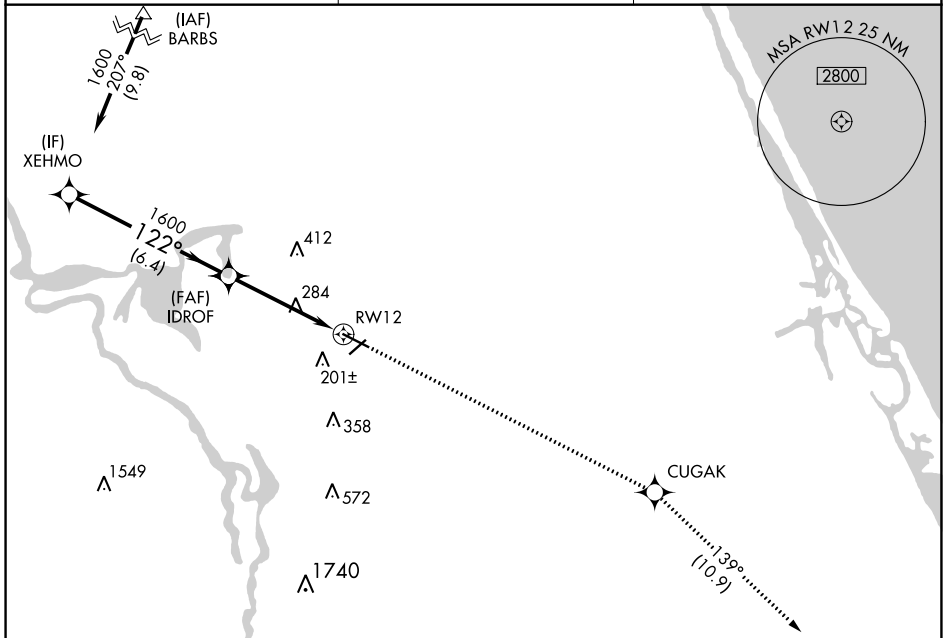
DELAND MUNI-SIDNEY H TAYLOR FIELD (DED)

RNP APCH.

⚠ For uncompensated Baro-VNAV systems, LNAV/VNAV NA below -15°C (5°F) or above 54°C (130°F). Baro-VNAV and VDP NA when using Daytona Beach Intl altimeter setting. Rwy 12 helicopter visibility reduction below 3/4 SM NA. When local altimeter setting not received use Daytona Beach Intl altimeter setting increase all DA/MDA 40 feet, increase LNAV/VNAV visibility 1/4 SM all Cats.

MISSED APPROACH: Climb to 2000 direct CUGAK then on track 139° to OAKIE and hold.

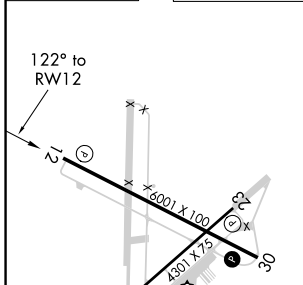
AWOS-3 119.575	DAYTONA APP CON 125.35 322.3	UNICOM 123.075 (CTAF) 📞
--------------------------	--	--



SE-3, 08 OCT 2020 to 05 NOV 2020

SE-3, 08 OCT 2020 to 05 NOV 2020

ELEV 79	TDZE 74
---------	---------



MIRL Rwy 5-23 and 12-30 **📞**
REIL Rwy 12 and 30 **📞**



VGSi and RNAV glidepath not coincident (VGSi Angle 3.00/TCH 51).		2000 CUGAK	tr 139°	OAKIE
XEHMO		IDROF	*1.5 NM to RWY 12	
1600		1600	*LNAV only.	
GP 3.00° TCH 40				
6.4 NM		3.1 NM	1.5 NM	
CATEGORY	A	B	C	D
LPV DA		404-1 1/4	330 (400-1 1/4)	
LNAV/VNAV DA		528-1 1/2	454 (500-1 1/2)	
LNAV MDA	600-1	526 (600-1)	600-1 1/2	526 (600-1 1/2)