

WAAS CH 45700 W23A	APP CRS 234°	Rwy Idg TDZE 78 Apt Elev 79	4301
--	------------------------	---	-------------

RNAV (GPS) RWY 23

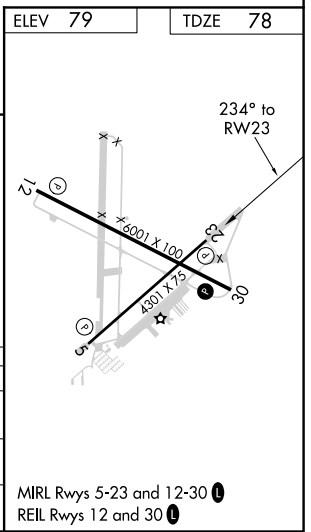
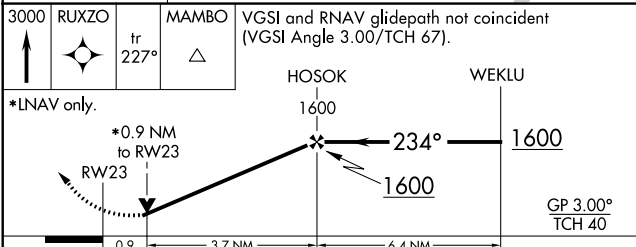
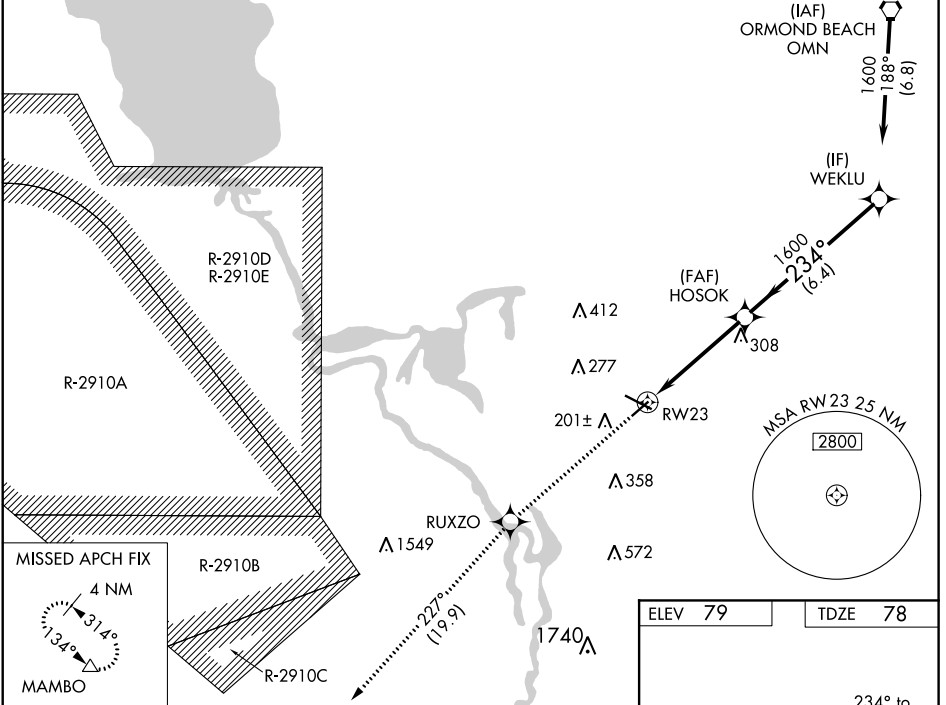
DELAND MUNI-SIDNEY H TAYLOR FIELD (DED)

RNP APCH.

▽ For uncompensated Baro-VNAV systems, LNAV/VNAV NA below -15°C (5°F) or above 54°C (130°F).
▲ Baro-VNAV and VDP NA when using Daytona Beach Intl altimeter setting. Rwy 23 helicopter visibility reduction below 3/4 SM NA. When local altimeter setting not received, use Daytona Beach Intl altimeter setting and increase all DA 38 feet and all MDA 40 feet, increase LPV visibility 1/8 SM all Cats.

MISSED APPROACH:
 Climb to 3000 direct RUXZO and on track 227° to MAMBO and hold.

AWOS-3 119.575	DAYTONA APP CON 125.35 322.3	UNICOM 123.075 (CTAF) 0
--------------------------	--	-----------------------------------



CATEGORY	A	B	C	D
LPV DA	374-1 296 (300-1)			
LNAV/VNAV DA	414-1 1/4 336 (400-1 1/4)			
LNAV MDA	420-1 342 (400-1)			

SE-3, 08 OCT 2020 to 05 NOV 2020

SE-3, 08 OCT 2020 to 05 NOV 2020