

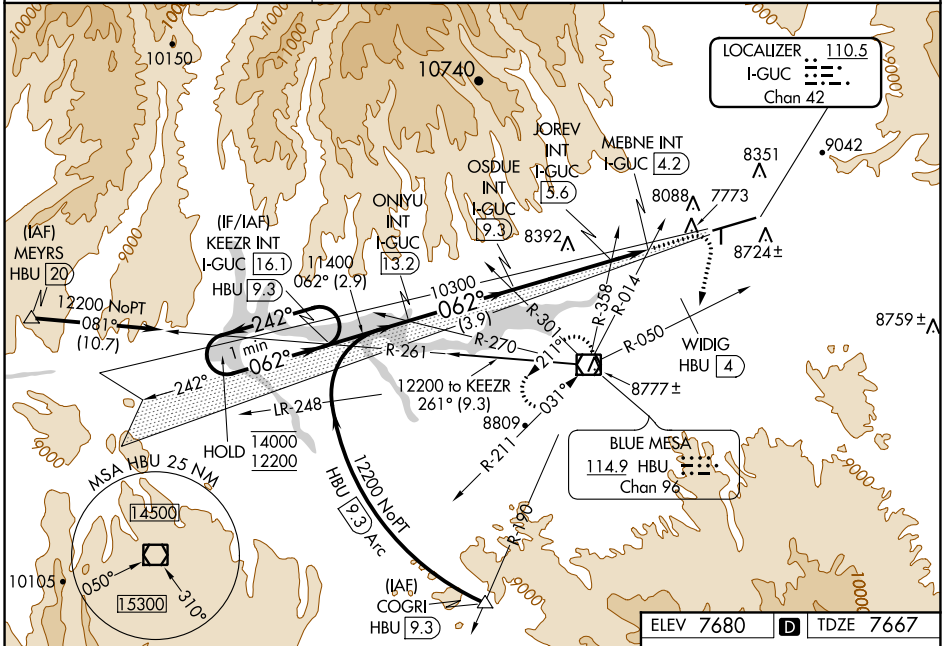
LOC/DME I-GUC 110.5 Chan 42	APP CRS 062°	Rwy Idg TDZE Apt Elev 9397 7667 7680
---	------------------------	--

ILS or LOC RWY 6

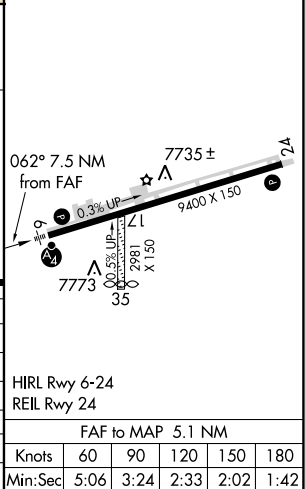
GUNNISON-CRESTED BUTTE RGNL (GUC)

DME required.	MALSF	MISSED APPROACH: Climb to 10000 then climbing right turn to 12000 on heading 180° and HBU VOR/DME R-050 to WIDIG/HBU 4. DME continue on HBU VOR/DME R-050 to HBU VOR/DME and hold.
<p>▼ Rwy 6 helicopter visibility reduction below ¾ SM NA. Inop table does not apply. Procedure NA when airport closed except by prior arrangement.</p> <p>⚠ -26°C</p>		

AWOS-3PT 135.075	DENVER CENTER 124.5 350.25	UNICOM 122.7 (CTAF)
----------------------------	--------------------------------------	-------------------------------



One Minute Holding Pattern 14000 ← 242° 12200 062° →	KEEZR INT I-GUC (16.1) ONIYU INT I-GUC (13.2) OSDUE INT I-GUC (9.3) JOREV INT I-GUC (5.6) MEBNE INT I-GUC (4.2)	HBU R-050 WIDIG HBU (4) HBU R-050	HBU	
	*LOC only			
GS 3.20° TCH 49	2.9 NM 3.9 NM 3.7 NM 1.4 NM 2.4 NM	10000 12000 14000 10300 *9020	hdg 180°	
CATEGORY	A	B	C	D
S-ILS 6	8590-3 923 (1000-3)			NA
S-LOC 6	9020-3		1353 (1400-3)	
CIRCLING	9260-3		1580 (1600-3)	
JOREV FIX MINIMUMS				
S-LOC 6	8640-3		973 (1000-3)	
CIRCLING	9260-3		1580 (1600-3)	



SW-1, 08 OCT 2020 to 05 NOV 2020

SW-1, 08 OCT 2020 to 05 NOV 2020

HIRL Rwy 6-24 REIL Rwy 24					
FAF to MAP 5.1 NM					
Knots	60	90	120	150	180
Min:Sec	5:06	3:24	2:33	2:02	1:42