

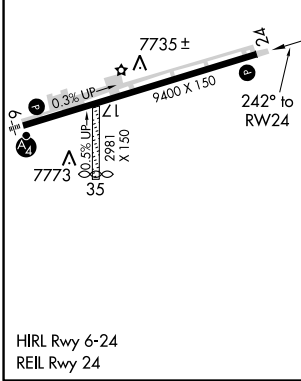
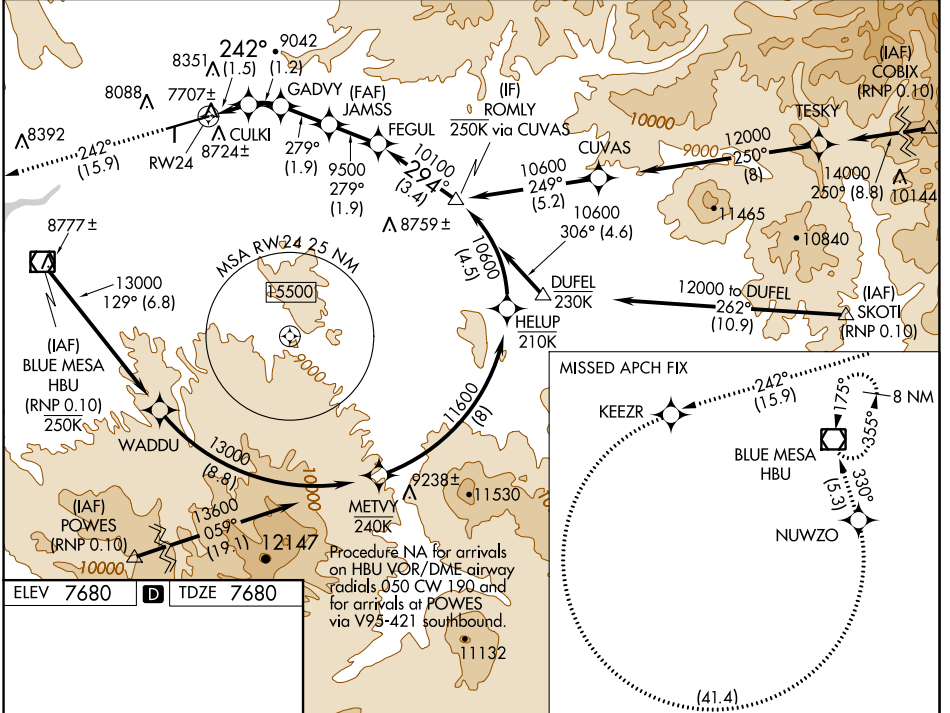
APP CRS	Rwy Idg	9397
242°	TDZE	7680
	Apt Elev	7680

RNAV (RNP) RWY 24
GUNNISON-CRESTED BUTTE RGNL (GUC)

RF and GPS required.
When local altimeter setting not received, procedure NA.
Procedure NA for aircraft with wingspan greater than 136 feet.
For uncompensated Baro-VNAV systems, procedure NA below -29°C (-20°F) or above 24°C (75°F).
When VGSI inoperative, procedure NA at night.
Missed approach requires minimum climb of 425 feet per NM to 9000.

MISSED APPROACH: Climb to 14000 on track 242° to KEEZR, and left turn to NUWZO, and on track 330° to HBU VOR/DME and hold.

AWOS-3PT 135.075	DENVER CENTER 124.5 350.25	UNICOM 122.7 (CTAF)
----------------------------	--------------------------------------	-------------------------------



Procedure NA for arrivals on HBU VOR/DME airway radials 050 CW 190 and for arrivals at POWES via V95-421 southbound.

MISSED APCH FIX

Procedure Turn NA
GP 3.60°
TCH 65

14000	KEEZR	NUWZO	VGSI and RNAV glidepath not coincident (VGSI Angle 3.60/TCH 71).	
↑ tr 242°	↙	↘	JAMSS	ROMLY
			FEGUL	
			GADVY	10600
			CULKI	Procedure Turn NA
			8320	GP 3.60°
			8776	TCH 65
			9500	
			10100	
			279°	
			294°	
			242°	
			1.5 NM	1.2 NM
			1.9 NM	1.9 NM
			3.4 NM	
CATEGORY	A	B	C	D
RNP 0.10 DA	7989-1 309 (400-1)			NA

AUTHORIZATION REQUIRED

SW-1, 08 OCT 2020 to 05 NOV 2020

SW-1, 08 OCT 2020 to 05 NOV 2020