

VOR/DME HBU <b>114.9</b> Chan <b>96</b>	APP CRS <b>031°</b>	Rwy Idg TDZE Apt Elev <b>7680</b>	N/A N/A <b>7680</b>
---	------------------------	--	---------------------------

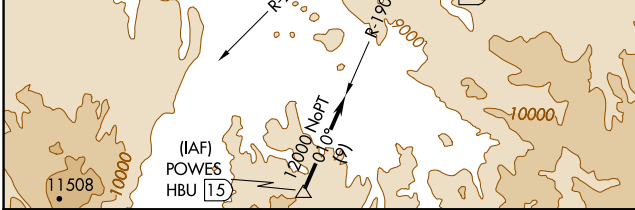
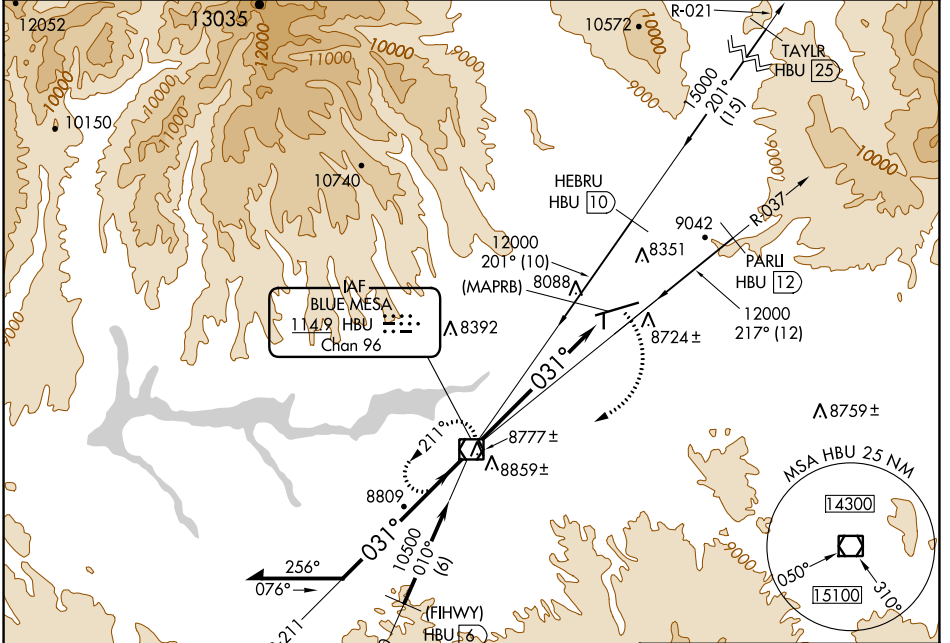
# VOR or GPS-A

GUNNISON-CRESTED BUTTE RGNL (GUC)

**Procedure NA** when airport closed except by prior arrangement. Obtain local altimeter setting on CTAF; when not received, procedure NA.

**MISSED APPROACH:** Climbing right turn to 12000 direct HBU VOR/DME and hold.

AWOS-3PT <b>135.075</b>	DENVER CENTER <b>124.5 350.25</b>	UNICOM <b>122.7 (CTAF)</b>
----------------------------	--------------------------------------	-------------------------------

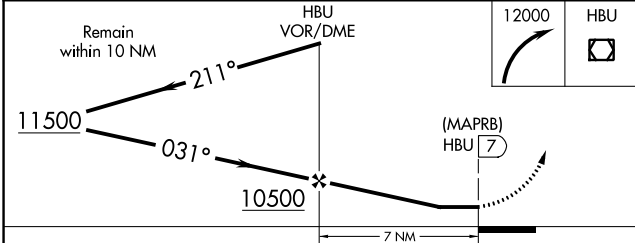


ELEV 7680 **D**

Inset diagram showing a 7 NM path from FAF to HBU. The path starts at 7773± feet, turns to 031° (7 NM from FAF), and ends at HBU (7680 feet). Other altitudes shown include 7735±, 7981, and 7773±. A bearing of 031° is also indicated.

HIRL Rwy 6-24  
REIL Rwy 24

FAF to MAP 7 NM	
Knots	Min:Sec
60	7:00
90	4:40
120	3:30
150	2:48
180	2:20



CATEGORY	A	B	C	D	FAF to MAP 7 NM					
CIRCLING	9260-2 1580 (1600-2)	9340-2 1660 (1700-2)	9340-3 1660 (1700-3)	9900-3 2220 (2300-3)	Knots	60	90	120	150	180
					Min:Sec	7:00	4:40	3:30	2:48	2:20

SW-1, 08 OCT 2020 to 05 NOV 2020

SW-1, 08 OCT 2020 to 05 NOV 2020