

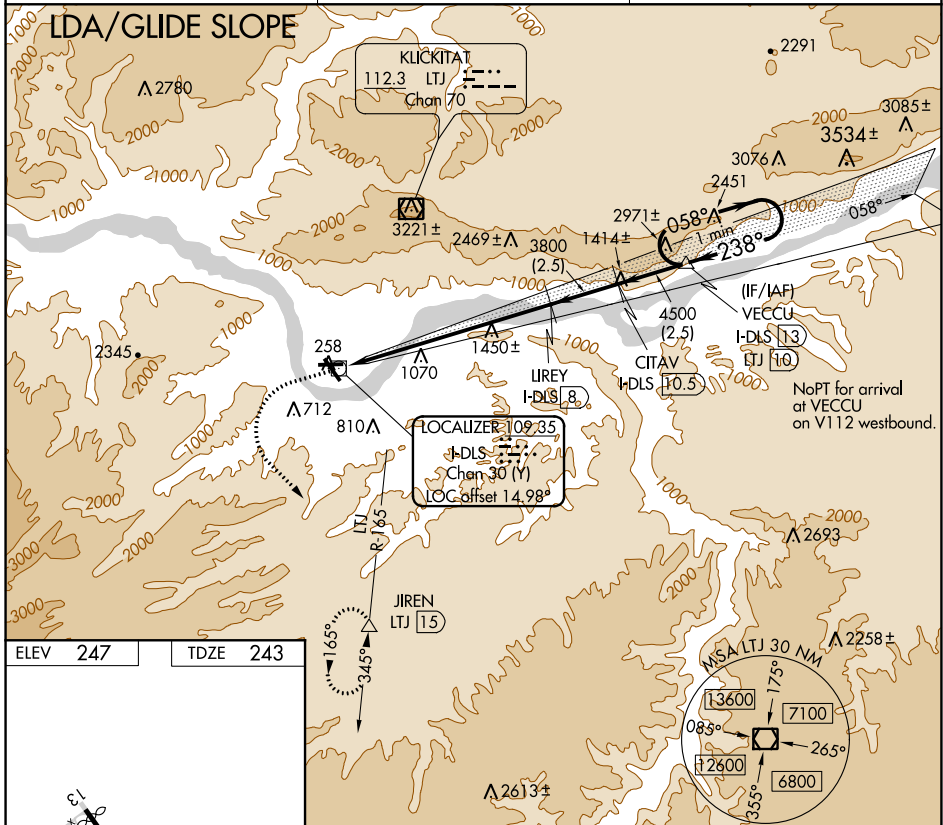
LOC/DME I-DLS 109.35 Chan 30 (Y)	APP CRS 238°	Rwy Idg TDZE 4451 243	Apt Elev 247
---	------------------------	---	------------------------

LDA/DME RWY 25

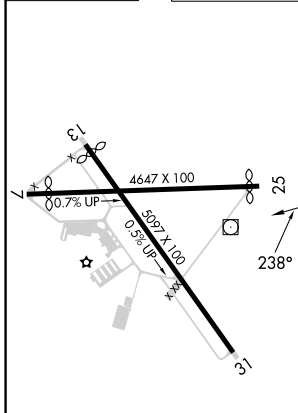
COLUMBIA GORGE RGNL/THE DALLES MUNI(DLS)

<p>When local altimeter setting not received, procedure NA. Glide slope provided by standard glide slope equipment.</p>	<p>MISSED APPROACH: Climb to 1600 then climbing left turn to 7000 on heading 120° and LTJ VOR/DME R-165 to JIREN/LTJ 15 DME and hold, continue climb-in-hold to 7000.</p>	
	ASOS 135.175	SEATTLE CENTER 119.65 257.6

UNICOM
123.0 (CTAF) 0



ELEV 247	TDZE 243
----------	----------



1600	7000	LTJ R-165	JIREN	Use I-DLS DME when on the localizer course.
↑	hdg 120°			VECCU I-DLS 13
		LIREY I-DLS 8	CITAV I-DLS 10.5	One Minute Holding Pattern
		3800	4500	058° → 5300
		3800		← 238°
				GS 4.20° TCH 43
		7.9 NM	2.5 NM	2.5 NM
CATEGORY	A	B	C	D
S-LDA/GS 25	1368-3	1125 (1200-3)		NA

REIL Rwy 31 0*
MIRL Rwy 7-25 and 13-31 0

NW-1, 08 OCT 2020 to 05 NOV 2020

NW-1, 08 OCT 2020 to 05 NOV 2020