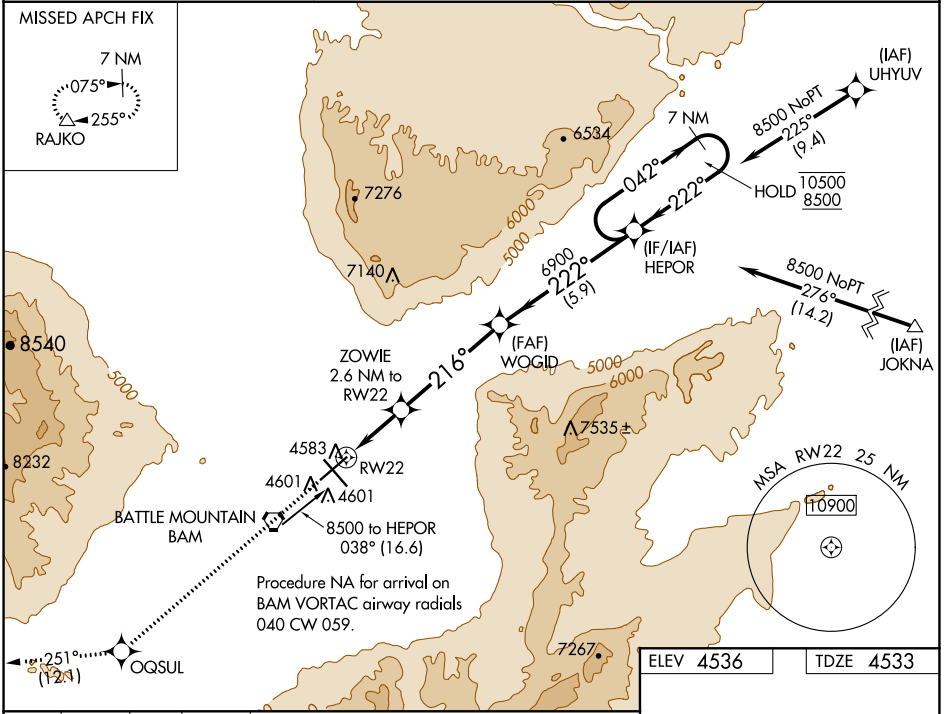


WAAS CH 82741 W22A	APP CRS 216°	Rwy Idg TDZE Apt Elev	7300 4533 4536
--	------------------------	-----------------------------	---

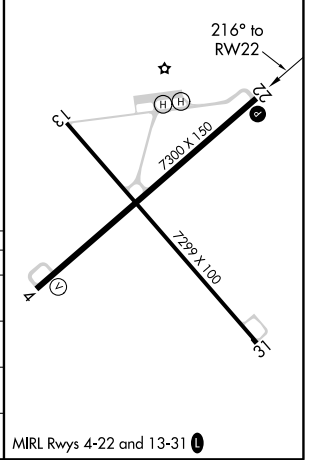
RNAV (GPS) RWY 22

BATTLE MOUNTAIN (BAM)

RNP APCH. Baro-VNAV NA.	MISSED APPROACH: Climb to 11900 direct OQSUL and track 251° to RAJKO and hold, continue climb-in-hold to 11900.	
AWOS-3 119.45	SALT LAKE CITY CENTER 132.25 388.35	UNICOM 122.8 (CTAF)



11900 OQSUL	tr 251°	RAJKO	VGSI and RNAV glidepath not coincident (VGSI Angle 3.00/TCH 45).	7 NM Holding Pattern
*LNAV only.		ZOWIE 2.6 NM to RW22	WOGID 6900	HEPOR 10500/8500
0.8 NM to RW22		5400	222°	042° → 10500 ← 222° 8500
0.8 NM	1.8 NM	4.7 NM	5.9 NM	GP 3.00° TCH 51



CATEGORY	A	B	C	D
LPV DA		4753-1	220 (300-1)	
LNAV/VNAV DA		4808-1	275 (300-1)	
LNAV MDA	4980-1	447 (500-1)	4980-1 $\frac{3}{8}$	447 (500-1 $\frac{1}{8}$)
CIRCLING	4980-1 444 (500-1)	5000-1 464 (500-1)	5000-1 $\frac{1}{2}$ 464 (500-1 $\frac{1}{2}$)	5460-3 924 (1000-3)

MRL Rwy 4-22 and 13-31

SW-4, 08 OCT 2020 to 05 NOV 2020

SW-4, 08 OCT 2020 to 05 NOV 2020