

WAAS CH 65927 W33A	APP CRS 339°	Rwy Idg TDZE Apt Elev	5659 4782 4875
----------------------------------------	------------------------	-----------------------------	-------------------------------------------

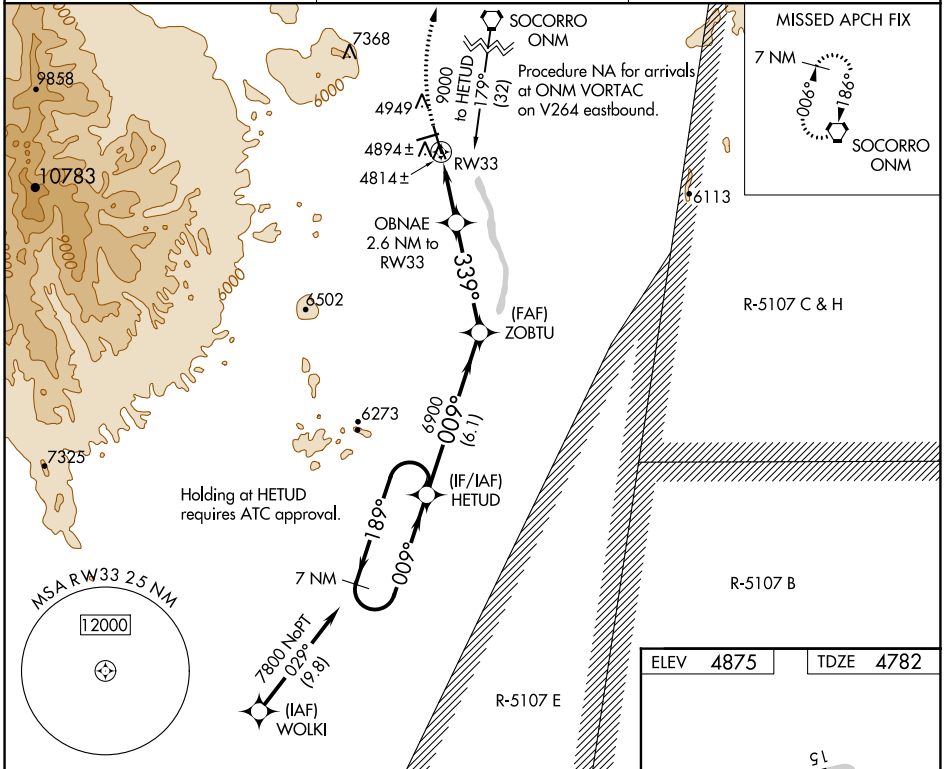
RNAV (GPS) RWY 33

SOCORRO MUNI (ONM)

▼ When VGSI inop, Circling Rwy 15 NA at night. When VGSI inop, Straight-in/Circling Rwy 33 procedure NA at night. DME/DME RNP-0.3 NA. Visibility reduction by helicopters NA. Circling NA west of Rwy 15-33. When local altimeter setting not received, procedure NA.

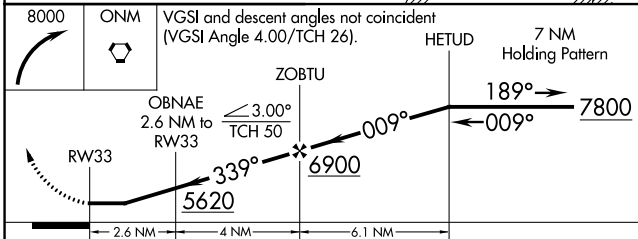
MISSED APPROACH: Climbing right turn to 8000 direct ONM VORTAC and hold.

AWOS-3 118.325	ALBUQUERQUE CENTER 124.325 288.25	UNICOM 122.8 (CTAF) 0
--------------------------	---------------------------------------------	---------------------------------

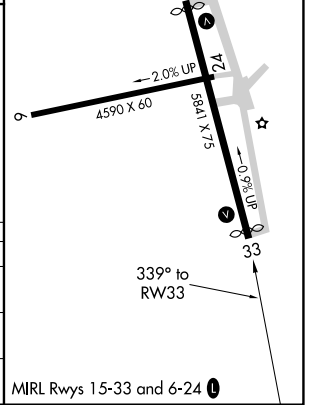


SW-1, 08 OCT 2020 to 05 NOV 2020

SW-1, 08 OCT 2020 to 05 NOV 2020



ELEV	4875	TDZE	4782
------	-------------	------	-------------



CATEGORY	A	B	C	D
LP MDA	5080-1 298 (300-1)			NA
LNAV MDA	5160-1	378 (300-1)	5160-1 1/8 378 (300-1 1/8)	NA
CIRCLING	5320-1 445 (500-1)	5340-1 465 (500-1)	5340-1 1/2 465 (500-1 1/2)	NA