

| | | |
|---|------------------------|--|
| VORTAC ONM 116.8 Chan 115 | APP CRS 179° | Rwy Idg TDZE Apt Elev N/A N/A 4875 |
|---|------------------------|--|

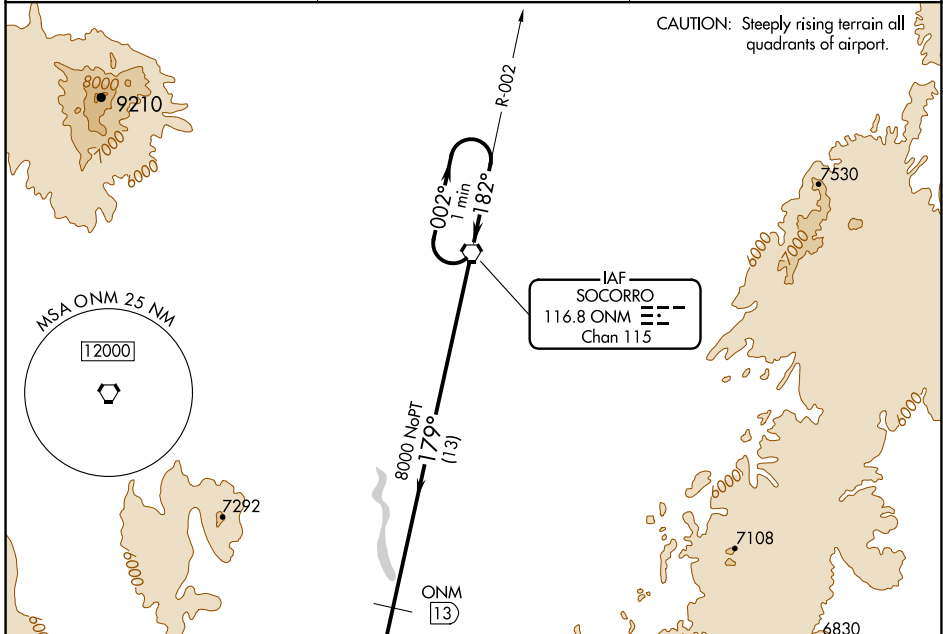
VOR/DME-A

SOCORRO MUNI (ONM)

⚠ NA When local altimeter not available, procedure not authorized.
 Circling not authorized west of Rwy 15-33.
 If arrival over Socorro VOR is above 8000 descend in the holding pattern to 8000 before commencing approach.

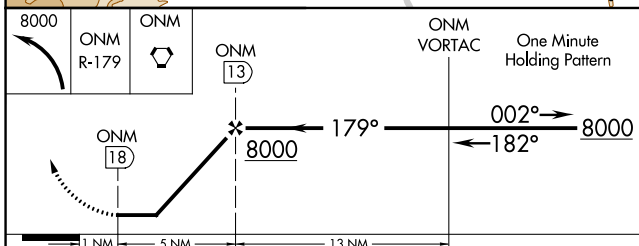
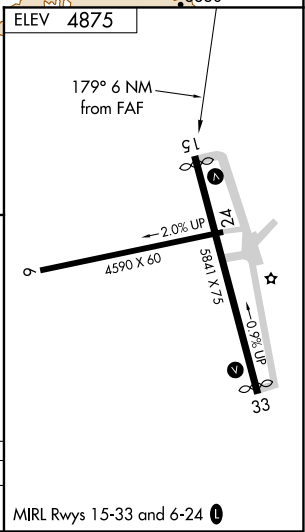
MISSED APPROACH: Climbing left turn to 8000 intercept ONM R-179 direct to ONM VORTAC and hold.

| | | |
|--------------------------|---|---------------------------------|
| AWOS-3 118.325 | ALBUQUERQUE CENTER 124.325 288.25 | UNICOM 122.8 (CTAF) 0 |
|--------------------------|---|---------------------------------|



CAUTION: Steeply rising terrain all quadrants of airport.

IAF
SOCORRO
116.8 ONM
Chan 115



| CATEGORY | A | B | C | D |
|----------|---------------------------|---------------------------|-------------------------|----|
| CIRCLING | 6540-1¼ 1665 (1700-1¼) | 6540-1½ 1665 (1700-1½) | 6540-3 1665 (1700-3) | NA |

MIRL Rwy 15-33 and 6-24 0

SW-1, 08 OCT 2020 to 05 NOV 2020

SW-1, 08 OCT 2020 to 05 NOV 2020